

# Crown of the Continent

PROTECTING LAND FOR PEOPLE IN MONTANA AND IDAHO



**TRUST** FOR  
**PUBLIC**  
**LAND**™



# Crown of the Continent

Trust for Public Land is a national nonprofit organization that works to connect everyone to the benefits and joys of the outdoors. As a leader in equitable access to nature, TPL works with communities to create parks and protect public land where it is needed most.

Since 1972, thanks to supporters like you, we have protected some of the Northern Rockies' most beloved landscapes, from the ravishing meadows of Swan Valley to the crystal waters of Kootenai River, for hiking, hunting, fishing, or simply relaxing in nature. Equally important, we have preserved thriving forests and ranches for families who have worked them for generations.

Today, our organization's mission is as important as ever. People from across the country are moving to the Northern Rockies in record numbers. Vast forests and watersheds that provide us with sanctuary, good jobs, clean air and water, are under increasing threat from real estate development. Today we stand at a crossroads: protect these special places now or risk losing them forever.

Trust for Public Land is the only organization ready to meet this moment. We helped lead the protection of the Swan Valley, the largest conservation deal in U.S. history, and passage of the Great American Outdoors Act, the most significant conservation bill in generations.

---

**With your help, TPL can achieve its goal of protecting 1 million acres in the Northern Rockies— an area equal to Glacier National Park.**

---

Our new **Crown of the Continent** campaign is even more ambitious than Swan Valley. By the end of **2027**, we plan to raise **\$10 million** to bring our legacy of land protection in the region from **670,000** to **1,000,000 acres**. With your help, over the next five years, we can protect a tapestry of natural and working lands the size of Glacier National Park for generations to come.

JEFF L. FOX



# Lands and public access

CHRIS BOYER



The **Crown of the Continent** campaign will deliver sweeping benefits for our communities. Below are some of the amazing places we aim to protect.

## The Montana Great Outdoors Project

We have a rare chance to save a swath of Montana wildlands larger than **Stillwater State Forest**. Hugging 17 gleaming lakes, a popular state park, and a scenic highway, this project is pivotal to achieving our broader regional goal.

Southern Pine Plantations acquired this property in 2019 and then began planning to resell it. Local residents treasure these majestic forests and lakes, famous for their prime hunting, fishing, and hiking opportunities.

Trust for Public Land has secured contracts to conserve nearly **114,000 acre** of the timber company's holdings. This project will consolidate our previous victories and help weave together a seamless natural area stretching from Glacier National Park to Cabinet Mountains Wilderness, and the Selkirk to Coeur d'Alene mountains.

This once-in-a-lifetime opportunity expires after 2027, so *we must act fast*.

## MONTANA GREAT OUTDOORS PROJECT

- Protect free public access to 24,660 acres of national forest and state land that would otherwise be land-locked and inaccessible.
- Maintain free, year-round public access for hiking, berry picking, mountain biking, snowmobiling, and other outdoor activities.
- Preserve 121 days per year of public hunting and angling that have been a tradition for generations.
- Grant the Confederated Salish and Kootenai Tribes perpetual access for hunting, fishing, and traditional practices on their ancestral lands.
- Ensure a sustainable harvest of timber and the jobs—20 full-time and 230 seasonal ones generating \$30 million a year—that go with it.



## BUILDING ON OUR SUCCESS

At the same time, Trust for Public Land is pursuing a constellation of landscapes around **The Montana Great Outdoors Project**:

- **55,000 acres** of wetlands and forests around **The Lost Trail National Wildlife Refuge**, with some of the best elk hunting in the state;
- **48,000 acres** of rich wildlife, timber, recreational areas in **Upper Thompson Valley** surrounded by public lands;
- **240 acres** of timberland near Bigfork with easy access to the scenic **Swan River Trail** and upland forests for new trails;
- **45,000 acres** in **Idaho's Panhandle**, from the heart of **McArthur Lake Wildlife Corridor** to the foothills of popular **Mount Spokane State Park**.

These are places of surpassing natural beauty and resources, abounding in wildlife, from grizzly bear to Canada lynx. Places renowned for sports and recreational opportunities, Native American and other historic sites. Places that support good jobs and local economies. Together, we can save these special places, and many more.

---

**“We are proud to be able to preserve some of the region’s most special places for outdoor recreation, while also ensuring the health and continuity of sustainable forestry.”**

*–Dick Dolan,*

*Northern Rockies Director*

---

With extensive experience and partnerships, TPL is uniquely positioned to save our remaining open spaces. Our data-driven mapping allows us to strategically quilt together large, connected landscapes for recreationists and wildlife alike. While our deep knowledge of government programs enables us to leverage \$8 in public capital for every \$1 in private donations.

With your support, we can permanently protect a landscape stretching from the **Idaho Panhandle** to **Glacier National Park**, for generations of Americans to explore and enjoy.



STEVEN GNAM



# Our legacy

## SAVING SWAN VALLEY

Trust for Public Land and The Nature Conservancy combined forces to pull off the biggest conservation project in U.S. history: the protection of **310,000 acres** in the **Swan Valley**. The Valley is a natural masterpiece of glacial peaks, clear lakes, and lush meadows. Located between the Bob Marshall and Mission Mountain Wilderness Areas, it provides critical connectivity for far-ranging animals like grizzly bear. We have also conserved thousands of acres of private lands in or around **Glacier National Park** and **Yellowstone National Park**.

## PLANNING FOR OUR FUTURE

Trust for Public Land's cutting-edge research and mapping informs open space planning decisions to maximize their benefits. With partners, we have developed a **Forest Carbon Map** for assessing the carbon sequestration capacity of U.S. forests and impending threats to them. We combine outreach and technology to create **Greenprints** or plans for parks-and-trail systems. While our **Community Outdoor Recreation Evaluator** charts recreational opportunities across the country.

## FUNDING OUR FUTURE

Drawing on its deep knowledge of government programs, TPL leverages private donations into public capital for conservation. Further, we help sustain and generate new public funding for our mission by spearheading new ballot measures and legislation. To date, we have supported over a dozen ballot measures in the Northern Rockies generating over half a billion dollars for conservation efforts there.



ALEX DIEKMANN



MEGAN SULLIVAN



ALEX DIEKMANN

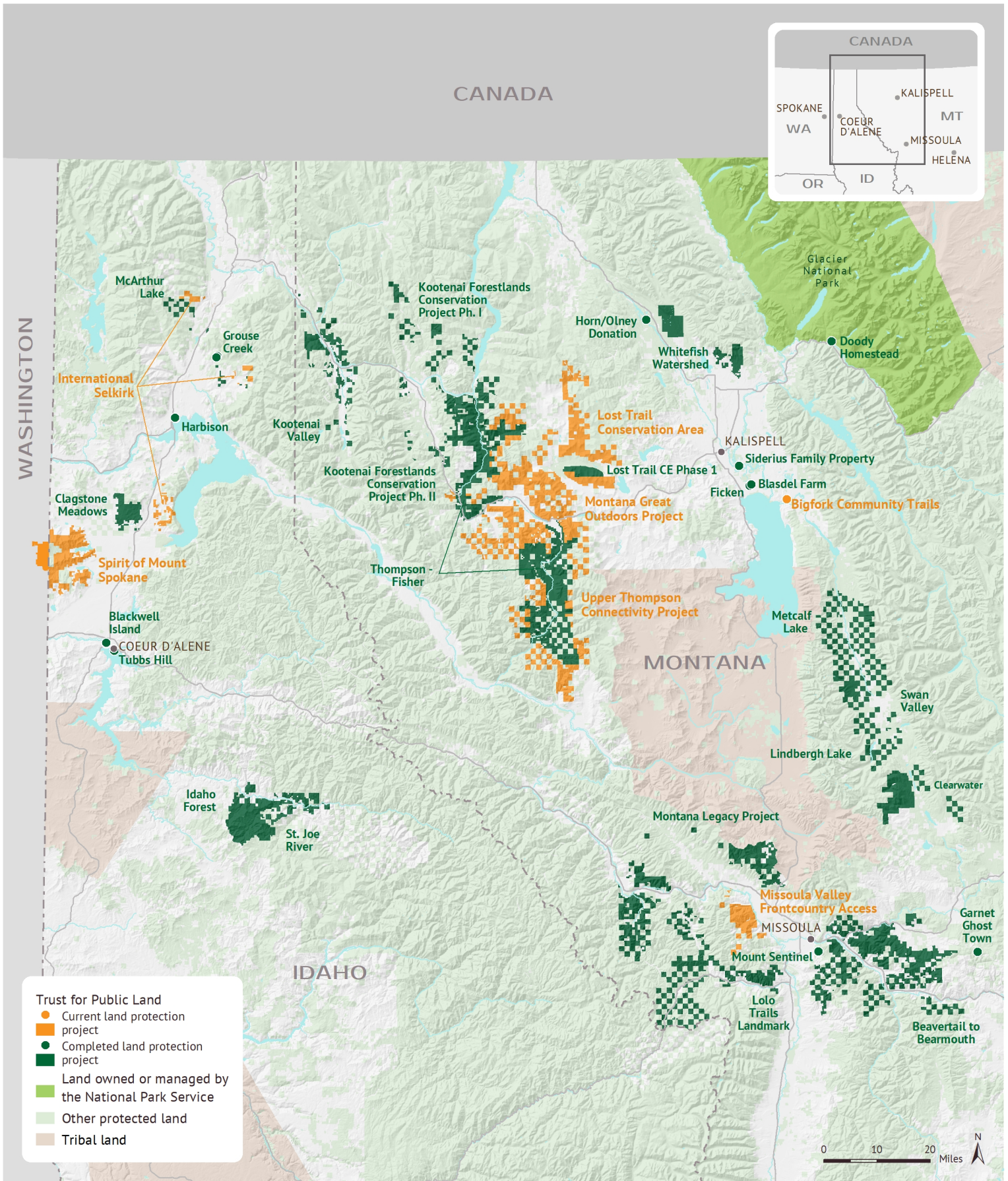




TM

*Connecting everyone to the outdoors™*





# Crown of the Continent

## CURRENT AND COMPLETED PROJECTS

June 29, 2022. Copyright © Trust for Public Land. Trust for Public Land and Trust for Public Land logo are federally registered marks of Trust for Public Land. Information on this map is provided for purposes of discussion and visualization only. [www.tpl.org](http://www.tpl.org)





# How you can help

TED WOOD



*TPL is raising \$10 million to protect 1 million acres in Idaho and Montana*

Our lifestyle in the Rockies is rooted in the great outdoors, but access to those spaces is not guaranteed. A historic influx of new residents to the region is accelerating development of our remaining natural areas. If we don't act swiftly, the places we love will soon look very different.

So we're asking you to act quickly and boldly. Together, we can raise \$10 million to protect 1 million acres of magnificent landscapes and productive working forests, an area the size of **Glacier National Park!**

For every \$1 you give, Trust for Public Land saves about \$8 worth of land! Here's what your generosity will do:

- Help us increase our capacity to meet today's opportunities, and to anticipate those in the future.
- Create the means to successfully execute complicated, multi-year deals permanently protecting irreplaceable natural and working lands.
- Fuel the critical advocacy and technical innovation that set us apart from our peers and helps us achieve conservation milestones.

Please make your tax-deductible gift today! Thank you for your support and partnership!

## Join us.

Trust for Public Land creates parks and protects land for people, ensuring healthy, livable communities for generations to come.

[tpl.org](http://tpl.org)

### Dick Dolan

Northern Rockies Director  
[dick.dolan@tpl.org](mailto:dick.dolan@tpl.org) | 406.582.6246

### Melissa Dulin

Director of Philanthropy  
Northern Rockies Program  
[melissa.dulin@tpl.org](mailto:melissa.dulin@tpl.org) | 406.580.6698

