

Community Forests: A path to prosperity and connection

LINCOLN COMMUNITY FOREST

NOTABLE BENEFITS



RECREATION



FOREST-BASED SERVICES



FOREST-BASED PRODUCTS

ACRES: 396

YEAR ESTABLISHED: 2012

OWNERSHIP: Landmark Conservancy

MANAGEMENT: Landmark Conservancy

COMMUNITY SERVED: Town of Lincoln, Wisconsin

POPULATION: 1,759

TOTAL ACQUISITION COST: \$735,450

FUNDING BREAKDOWN:



■ Community Forest and Open Space Conservation Program

■ Cost Share

For a comprehensive review of the community and economic benefits provided by this forest and others, go to the full report at www.tpl.org/economic-benefits-community-forests



The Lincoln Community Forest spans 396-acre in the Town of Lincoln, Wisconsin. The forest was protected by the U.S. Forest Service Community Forest and Open Space Conservation Program (CFP) as well as state funds. The property is owned and managed by a local land trust and is also supported by a Friends group, which maintains the trails, provides nature-based recreational and educational opportunities, manages the forest, and collaborates to improve water quality.

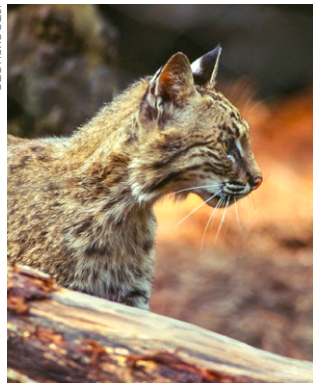
This project is a great example of how the CFP is creating opportunities for local communities. This investment leveraged state funding to enable a group of concerned citizens to protect a property that provides important access to recreational opportunities, supports the forest based economy through its harvesting activities, and protects water quality in the watershed.





Enabling recreation: Prior to its acquisition, the property was enrolled in a forest management program through Wisconsin Department of Natural Resources. The program allowed public access and precluded development, but when the property was listed for sale, citizens were concerned about potential development

and loss of access. The property can now be used for hiking, fishing, cross-country skiing, bird watching, snow-shoeing, trapping, fat-biking, and nature-viewing. Several hundred people visit the property each year, with the winter and summer seasons being most popular. The



Friends group annually hosts at least one trail work day on the forest as well as field days with Wisconsin Woodland Owners Association and University of Wisconsin Extension. The Friends group also annually hosts a nature hike as part of the Chequamegon Bay Birding and Nature Festival that occurs each May. The events typically have approximately 10 to 25 participants. A new trail is planned to allow visitor access to the water and wildlife viewing opportunities.

Managing timber: The forest is also enrolled in Wisconsin's Managed Forest Law program, which encourages sustainable forestry, and portions of the property have been harvested in recent years. For example, in 2017 an aspen harvest occurred on a 23-acre section of the forest. Revenue from harvests is reinvested in the land, such as covering staff time to manage the property and completing projects on the property. Future projects will ensure the establishment of white pine seedlings that have been planted.

Protecting water quality: The property has two miles of frontage on the Marengo River, a category II trout stream in the Lake Superior watershed that has a strong population of native brook trout. By maintaining the land's forest cover and managing it properly, the property is helping to slow the flow of water across the landscape which protects the water quality, the Marengo River watershed, and the greater Bad River Watershed and Lake Superior.



This project was completed in partnership with the U.S. Forest Service and would not have been possible without generous support from the U.S. Endowment for Forestry and Communities and the U.S. Forest Service.

The Trust for Public Land creates parks and protects land for people, ensuring healthy, livable communities for generations to come.

www.tpl.org

For additional information: Michael Giammusso | National Lands Initiative Lead
3 Shipman Place | Montpelier, VT 05602 | (802)249-9512

USDA is an equal opportunity provider, employer, and lender.