

## Appendix 2: References

# Lake Chelan Community Open Space Vision References

## Lake Chelan and the Surrounding Study Area

Economic Profile System, Headwaters Economics. "Chelan County Demographics." Accessed November 28, 2016. <https://headwaterseconomics.org/tools/economic-profile-system/#demographics-report-section>.

Economic Profile System, Headwaters Economics. "Chelan County Profile." Accessed November 28, 2016. [http://headwaterseconomics.org/wphw/wp-content/uploads/print-ready-measures-pdfs/53007\\_Chelan-County\\_WA\\_Measures.pdf](http://headwaterseconomics.org/wphw/wp-content/uploads/print-ready-measures-pdfs/53007_Chelan-County_WA_Measures.pdf).

Economic Profile System, Headwaters Economics. "Land Use for Chelan County." Accessed November 28, 2016.

Montgomery Water Group, Washington Department of Ecology. "Chelan Watershed Initial Assessment." Drafted May, 1995. Accessed November 28, 2016. <https://fortress.wa.gov/ecy/publications/publications/95161.pdf>.

Washington Department of Ecology. "Water Quality Improvement Project, Lake Chelan Area." Accessed November 28, 2016. <http://www.ecy.wa.gov/programs/wq/tmdl/LkChelanTMDLSummary.html>.

Washington Apple Country. "Washington Apple Country History." Accessed November 28, 2016. <http://www.appleorchardtours.com/hist01.htm>.

## Population and Housing

Economic Profile System, Headwaters Economics. "Chelan County Demographics." Accessed November 28, 2016. <https://headwaterseconomics.org/tools/economic-profile-system/#demographics-report-section>.

## Economy

Economic Profile System, Headwaters Economics. "Chelan County Profile." Accessed November 28, 2016. [http://headwaterseconomics.org/wphw/wp-content/uploads/print-ready-measures-pdfs/53007\\_Chelan-County\\_WA\\_Measures.pdf](http://headwaterseconomics.org/wphw/wp-content/uploads/print-ready-measures-pdfs/53007_Chelan-County_WA_Measures.pdf).

## Land Use and Ownership

Washington Department of Ecology. "Chelan Watershed Initial Assessment." Accessed November 28, 2016. <https://fortress.wa.gov/ecy/publications/publications/95161.pdf>.

Economic Profile System, Headwaters Economics. "Land Use for Chelan County." Accessed November 28, 2016.

## **Water**

Department of Ecology, State of Washington. "Lake Chelan Water Quality." Accessed November 26, 2016. <http://www.ecy.wa.gov/programs/wq/tmdl/LkChelanTMDLSummary.html>.

Lake Chelan Reclamation District. "History". Accessed November 28, 2016. [http://lcrd.org/history\\_32.html](http://lcrd.org/history_32.html).

Lake Chelan Reclamation District. "Federal Irrigation Comprehensive Water Conservation Plan." Accessed November 28, 2016. [http://lcrd.org/irrigation\\_292.html](http://lcrd.org/irrigation_292.html).

Washington Department of Ecology. "Chelan Watershed Initial Assessment." Accessed November 28, 2016. <https://fortress.wa.gov/ecy/publications/publications/95161.pdf>.

## **Energy Production**

Chelan PUD. "Habitat Conservation Plans." Accessed November 26, 2016. <https://www.chelanpud.org/environment/habitat-conservation-plans>.

Chelan PUD. "Lake Chelan Dam." Accessed November 26, 2016. <https://www.chelanpud.org/>.

## **Wildlife**

U.S. Fish and Wildlife Service. "Environmental Conservation Online System, Species By County Report: Chelan County, Washington." Accessed November 28, 2016. [http://ecos.fws.gov/tess\\_public/reports/species-by-current-range-county?fips=53007](http://ecos.fws.gov/tess_public/reports/species-by-current-range-county?fips=53007).

## **Recreation**

Chelan Park, Recreation, and Open Space (PROS) Plan. June, 2016. Accessed November 26, 2016. <https://cityofchelan.us/pdfdocs/2017/10/PROS-Plan-Final-with-Appendices.pdf>.

Lake Chelan. "About The Area." Accessed November 26, 2016. <http://www.lakechelan.com/about-the-area/>.

Washington Department of Fish and Wildlife. "Lake Chelan." Accessed November 26, 2016. <http://wdfw.wa.gov/fishing/washington/564/>.

## **Agricultural Lands**

Economic Profile System, Headwaters Economics. "Land Use for Chelan County." Accessed November 28, 2016.

USDA Census of Agriculture. "2012 Chelan County Census of Agriculture." Accessed November 28, 2016. [https://www.agcensus.usda.gov/Publications/2012/Online\\_Resources/County\\_Profiles/Washington/cp53007.pdf](https://www.agcensus.usda.gov/Publications/2012/Online_Resources/County_Profiles/Washington/cp53007.pdf).

Washington Apple Country. "Washington Apple Country History." Accessed November 28, 2016. <http://www.appleorchardtours.com/history.htm>.

## **Wineries and Vineyards**

Wines and Vines. "Chelan Scores AVA Status." April 29, 2009. Accessed November 22, 2016. <http://www.winesandvines.com/template.cfm?section=news&content=64152>.

Washington Wine, Lake Chelan. Accessed November 22, 2016.

<https://www.washingtonwine.org/wine/facts-and-stats/regions-and-avas/lake-chelan>.

Wines Northwest. "Lake Chelan Wine Country." Accessed November 22, 2016.

<http://www.winesnw.com/lakechelanhome.htm>.



## Appendix 3: Criteria Matrix

# Lake Chelan Community Open Space Vision Model Criteria

Goal Name	Goal Weight	Criteria Name	Criteria Weight	Methodology	Data Source
Protect Water Quality	40%				
		Protect riparian and wetland buffers	30%	<p>This analysis highlights the importance of riparian buffers to protect streams and water bodies from pollutant runoff. It buffers streams, waterbodies and wetlands, with the highest priority given to wetlands, and waters of known high pollutant content.</p> <p>Streams and waterbodies are selected if they have U.S. Geological Survey name, if they are identified as being perennial or intermittent, if they occur as an Environmental Protection Agency (EPA) impaired water, or if they are identified in the "Lake Chelan Watershed DDT and PCB Total Maximum Daily Load: Water Quality Improvement" reports. All waters are buffered to 300 feet. The EPA listed waters and all wetlands are given the highest priority value of 5 (highest priority). All others are given a priority value of 3 (moderate priority).</p> <p>Stream identified as impaired are Roses Lake, Wapato Lake, Cooper Gulch , Joe Creek, Purtteman Gulch, Stink Creek, East Fork Joe Creek and First Creek.</p>	<p>U.S. Environmental Protection Agency (impaired waters)</p> <p>U.S. Fish and Wildlife Service (wetlands)</p> <p>Chelan County (streams)</p> <p>WA Dept of Natural Resources (streams)</p> <p>National Hydrography Dataset (streams and waterbodies)</p> <p>"Lake Chelan Watershed DDT and PCB Total Maximum Daily Load: Water Quality Improvement" reports (2006 and 2008)</p>

		Minimize soil erosion into surface water	30%	This analysis I prioritizes the most highly erodible soils based on a soils erodibility factor as determined by the Natural Resources Conservation Service. Output values represent the three classes of erodibility above the mean as priorities 3-5 (moderate to high priority).	U.S. Department of Natural Resource Conservation Service soils data (SSURGO)
		Identify locations for constructed wetlands	40%	<p>This analysis identifies potential priority areas for constructed wetlands along and adjacent to specific waters known to be impaired by pollutants, and where slopes are very low .</p> <p>The following waterbodies and streams are selected: Cooper Gulch, Joe Creek, East Fork Joe Creek, Purtteman Gulch, Stink Creek, Dry Lake and Roses Lake. These are then buffered by 300 feet, and areas inside those buffers where slopes are &lt;= 3 percent are given a priority of 5 (highest priority).</p>	<p>Chelan County (streams and waterbodies)</p> <p>WA Department of Natural Resources (streams)</p> <p>U.S. Geological Survey National Hydrography Dataset (waterbodies)</p> <p>WA Department of Ecology (digital elevation model at 10 meter cell size for slope)</p> <p>"Lake Chelan Watershed DDT and PCB Total Maximum Daily Load: Water Quality Improvement" reports (2006 and 2008)</p>
<b>Protect Wildlife Habitat</b>	<b>16%</b>				

		Protect diverse ecosystems	25%	<p>Diverse ecosystems can support a diversity of wildlife. In this model we explore diversity in both forest and grassland ecosystems.</p> <p>The model uses the diameter diversity index and the regionalized old-growth structure index from Landscape Ecology, Modeling, Mapping &amp; Analysis (LEMMA) data from Oregon State University. These continuous variables are broken into 5 classes and the classes 3 through 5 are given moderate to very high priority. In addition, grasslands of special significance are incorporated into the model using data created by the USFWS and the Arid Lands Initiative. Subtracted from these results are areas in which there has been a forest fire since 2010, as well as areas that are currently agricultural or developed.</p>	<p>LEMMA- USFS Pacific Northwest Research Station and Oregon State University</p> <p>Arid Lands Initiative. 2014. Spatial Conservation Priorities in the Columbia Plateau Ecoregion: Methods and data used to identify collaborative conservation priority areas for the Arid Lands Initiative.</p> <p>USFS forest history data from Okanogan-Wenatchee National Forest</p> <p>Agricultural land cover from Chelan County Voluntary Stewardship Program</p> <p>USGS- 2011 NLCD Developed Lands</p>
--	--	----------------------------	-----	--	--

		Protect native plants and animals	25%	<p>This model has information about historic locations of nesting birds and rare plant species.</p> <p>Bald Eagle nest buffers (WADFW PHS data) are 660' in radius and given high priority (5).</p> <p>Owl nest sites (WADFM PHS data): There is only one in the study area that has not had a fire pass through it in the last 5 years. It is given a 800 m buffer and then given high priority (5).</p> <p>From PHS occurrence data, nests with a date more recent than 2000 (15 years of data because the most recent point is 10/2015), are prioritized as follows: bald eagle, osprey, or peregrine falcon nests are assigned a 5 for the area within a 660' buffer. A golden eagle is given a 1-mile buffer and assigned a 5 for that area.</p> <p>If it is a nest with Western grey squirrel it is assigned a 5 for the 660' buffer (really? all of these were digitized in 2000. maybe leave out?)</p> <p>From NHP: Threatened and endangered plant and animal species locations -removed records that were older than 1979 and assigned all of them a 5.</p>	<p>Washington Department of Fish and Wildlife (WADFW) Priority Habitat and Species (PHS) data</p> <p>Washington Department of Natural Resources-Natural Heritage Program (NHP)</p>
		Protect wildlife priority habitats.	25%	<p>Important habitat areas are prioritized based on the number of overlapping observations. Using the priority habitat data as well as the boundaries of bighorn sheep herds from WADFW, we prioritize with a 5 those areas of habitat that overlap each other. Areas with habitat that does not overlap another habitat polygon are assigned a 3. Any area with land cover classified as developed or agricultural is removed from this prioritization.</p>	<p>WADFW PHS</p> <p>WADFW Bighorn sheep herd polygons</p>
		Protect native trout	25%	<p>This analysis prioritizes areas within 300' of important trout habitat streams. These streams come from WADFW Priority Habitat and Species data, as well as Climate Shield data that show where future fish habitat will be under future climate change scenarios. Forested areas within this buffer are prioritized as very high (5), natural areas are high (4), and slightly disturbed areas are given a moderate priority (3). Developed areas are not prioritized.</p>	<p>WADFW PHS Climate Shield streams with Bull and Cutthroat trout (USFS Rocky Mountain Research Station)</p>
Promote Community health through increasing access to trails, parks and the lake	27%				

		Increase access to the lake	27%	<p>This analysis identifies current and potential future public access points to Lake Chelan.</p> <p>Currently used and identified Right of Way's (ROWS) around the lake are mapped along with ROW's identified in the Wenatchee Open Space Vision plan and newly created potential public use ROW's. All are buffered to 100' and given a weight of 5 (highest priority).</p>	<p>Trust for Public Land Open Space Vision for Wenatchee and Lake Chelan.</p> <p>Shoreline Management Plan.</p>
		Increase trail opportunities	25%	<p>This analysis identifies and prioritizes proposed new trails and trailheads.</p> <p>Proposed trail lines and trailhead points have been digitized over aerial imagery at a general scale. The new lines and points are buffered to 100'.</p> <p>Trails are prioritized by name and given a priority weight of 1, 2 or 3 representing high, moderately-high and moderate rankings respectively. Rankings are assigned based on a variety of factors including popularity, land ownership, accessibility, ease of construction and wildlife concerns. Output values are 3-5 (moderate to high priority).</p>	<p>Trust for Public Land Open Space Vision process.</p> <p>Shoreline Management Plan.</p>
		Identify gaps in existing parks and open space for new parks	25%	<p>This analysis is based on The Trust for Public Land's Park Serve methodology. The analysis creates park access points to each park, and then determines a 10-min walk in any direction from the access points along a walkable network. Areas outside of these service areas are park gaps. These gaps are prioritized by comparing them based on their total population, low income population, and the youth population.</p> <p>Parks/Conserved Lands come originally from TNC Forest Atlas. Then we removed private owners, industrial parks, and working lands. Parks for Chelan were added based on their city planning document, and parks from Manson were digitized based on the information on their website. Chelan PUD quality controlled this park layer and added information about public access.</p> <p>Median household income, necessary for the Park Gap analysis, was calculated by averaging the values for all of the block groups that are in the study area, which was \$53,199.</p>	<p>TNC Forest Atlas</p> <p>City of Chelan Parks and Recreation Comprehensive Plan 2008-2014</p> <p><a href="http://www.mansonparks.com">www.mansonparks.com</a></p>

		Locally important landmarks	23%	<p>This analysis identifies scenic views and landmarks as deemed important to the community.</p> <p>Scenic areas identified in the community poll as places that have special meaning are given moderate (3) through high priority (5) based on the number of times they were identified. Additionally, scenic view corridors from the Shoreline Management Plan (roads around Lake Chelan) that highlight views of the lake are given a high priority (5).</p> <p>Locations include: Scenic roads, Chelan Butte, Chelan River Gorge, Echo Ridge, Bear Mountain, Deer Mountain, 4th of July Mountain, 25 mile Creek, Beebe Springs, Echo Valley, First Creek Drainage, Wapato Point and local wineries.</p>	<p>Chelan Open Space Vision community polls.</p> <p>Shoreline Management Plan consultant data.</p> <p>USGS topographic map areas digitized by the Trust for Public Land.</p>
<b>Preserve Working Lands</b>	16%				
		Protect high quality agricultural soils with low slope	33%	<p>This analysis prioritizes the most important farmland soils that also occur on low slopes.</p> <p>Low slopes are those identified as slopes <math>\leq 8</math> percent. Prime farmland soils are selected and prioritized as follows: 'Prime farmland if irrigated' = 3 (moderate priority), 'Farmland of unique importance' = 4 (moderately-high priority) and 'Farmland of statewide importance' = 5 (highest priority).</p>	<p>U.S. Natural Resource Conservation Service soils data (SSURGO)</p> <p>WA State Department of Ecology digital elevation models at 10 meter on-the-ground cell size.</p>
		Protect working agricultural lands	33%	<p>This analysis identifies working agricultural lands.</p> <p>Crop types falling under the categories of berry, Cereal Grain, Hay/Silage, Nursery, Orchard, Vegetable or Vineyard, and all agricultural lands provided water rights by the Lake Chelan Reclamation District are given a priority of 5 (highest priority).</p>	<p>WA State Department of Agriculture (2015 data)</p> <p>Lake Chelan Reclamation District</p>

		Protect views of agricultural landscapes	33%	<p>This analysis prioritizes ag lands that have the most views along scenic roads.</p> <p>Points were created every quarter mile along designated scenic byways and selected roads (Boyd and South Shore). A Viewshed analysis was performed from each point to agricultural areas falling under the categories of berry, cereal grain, hay/silage, nursery, orchard, vegetable, vineyard or pasture. Higher output values represent agricultural areas viewable from the most road points. Output values are 3 (moderate priority), 4 (moderate-high priority) and 5 (highest priority).</p>	<p>WA State Department of Agriculture (2015 data)</p> <p>Chelan County (digital elevation model at 10 meter on-the-ground cell size)</p> <p>U.S. Geological Survey National Map roads.</p>



## Appendix 4: Potential Trail Segments



## "21 TRAILS" PLANNING DOCUMENT

#	NAME	PROPOSED TRAILHEAD	FIELD VERIFY?	TYPE	NOTES
1	Butte Complex	Reach One (existing)	YES	Upland Trail	Includes entire Butte area (but not Little Butte Hike)
2	Bear Mountain	tbd	YES	Upland Trail	Could be accessed via Davis Canyon Acquisition
3	Deer Mountain	"Ballfield"	YES	Upland Trail	
4	Little Butte	Downey	YES	Upland Trail	
5	4 <sup>th</sup> of July	Antilon	YES	Upland Trail	
6	Manson Reclamation ROW Trail	Park at Wapato Lake	YES	Urban/Road Trail	Along reclamation district ROW
7	Three Lakes View Peak	tbd	YES	Upland Trail	
8	South Shore Trail (Lake Loop)	Don Morse Park	YES	Urban/Road Trail	From Chelan to the State Park along existing roads
9	North Shore Trail (Lake Loop)	Don Morse Park	YES	Urban/Road Trail	From Chelan to Manson along existing roads
10	Boyd District Loop	Don Morse Park	YES	Urban/Road Trail	From Chelan to Manson through Boyd District
11	Bear Mountain Complex	Knapps	NO	Upland Trail	Possible via acquisition from Scofield Corp.
12	Navarre to Stormy	Navarre	NO	Upland Trail	With Stormy/First Creek Loop
13	Box Canyon Trail	tbd	YES	Upland Trail	
14	25 Mile Creek to Fields Point	Fields Point	NO	Upland Trail	
15	Antilon Lake Complex	Antilon	YES	Upland Trail	
16	Antilon to Echo Ridge Connector	Antilon or Echo Ridge	NO	Upland Trail	
17	Deer Mountain to Beebe Springs Connector	"Ballfield"	YES	Urban/Road Trail	
18	Downtown Chelan to Walmart	na	YES	Urban/Road Trail	
19	High School Connector	na	YES	Urban/Road Trail	
20	Manson Urban Connectors	Na	YES	Urban/Road Trail	Widening existing roads for safer walking and biking
21	PUD Reach trails		YES		

## Appendix 5: Survey Results

# Lake Chelan Community Open Space Vision Community Survey 2016-2017

## 1. Executive Summary

A summary of key results is provided below.

### Overall Highlights/Themes

- The top community priorities for open space are protecting water quality and expanding access to the outdoors—especially access to the lake.
- Only 24% of participants agree or strongly agree that there is adequate public access to the shores of Lake Chelan.
- There are differences in how Hispanic residents and non-Hispanic residents use Lake Chelan and local trails. For example, 22% of Hispanic residents walk or hike to commute versus only 7% of white, non-Hispanic residents.
- The lake and local parks are what survey participants love most of about the Lake Chelan area. The lake and local parks are also the places that have the most special meaning for respondents.
- There is a great deal of local concern about growth, development, affordability (especially affordable housing), and wildfires.
- Survey participants are very active. Those who use trails use them an average of seven days per month in the summer and five days per month in the winter, and 70% of respondents swim in Lake Chelan.

### Who responded to the survey?

In total, 724 people participated in the community survey. Of those responses, 118 responses were gathered at local high schools (largely, but not exclusively, from students), and 79 responses are from the Spanish-language survey. Between 150 and 200 participants skipped some or all demographic questions.

- 69% of participants have a primary residence in the Lake Chelan area, and 22% have a second home in the area.
- 64% of participants were female, and 36% were male.
- The average age of participants was 51, and 21% of participants were 35 years old or younger.
- Approximately one-third of respondents have gross annual household incomes of \$49,999 or less; one-third have household incomes of \$50,000-\$99,000; and one-third have household income of \$100,000 or more.
- Over half of the participants do not have children under 18 in their household.
- 76% identified themselves as white/non-Hispanic, followed by 19% who identified themselves as Hispanic. The Hispanic population in the study area is 36%, so Hispanic survey participants were underrepresented. (Key survey results were weighted to address this issue.)
- 62 people (15% of respondents) indicated that at least one family member needs ADA-accessible facilities.

## Open Space Priorities

Based on weighted survey results, the top four conservation goals for the Lake Chelan area are: (1) Protect water quality; (2) Promote community health through increasing access to trails, parks, and the lake; (3) Protect wildlife habitat; and (4) Preserve agricultural land.

## 2. Methods

The survey for the Lake Chelan Community Open Space Vision was available online from July 2016 to November 2016. There were two duplicate surveys created for youth engagement and for Spanish-language outreach. Outreach for the survey included: (1) posting and promoting the survey link on the Lake Chelan Community Open Space Vision Facebook page, (2) emailing the online survey link to the local high school, (3) promoting the online survey through the Go Lake Chelan newsletter, (4) distributing the online survey link via the Chamber of Commerce website, (5) distributing postcards with the online survey link, (6) sending the online survey link out to the stakeholder list, (7) hosting the Spanish-language online survey on the homepage of public library computers in Chelan, (8) employing bilingual high school students to distribute and collect paper copies of the Spanish-language survey over Memorial Day weekend in 2017, (9) posting online survey links on community bulletin boards at the Chelan Post Office, and (10) sharing the online survey link via the KOZI radio station.

### Survey Weighting

Despite targeted outreach, the Hispanic community was underrepresented in survey responses. Only 19% of those who answered the race and ethnicity question indicated that they were Hispanic. According to census data for the study area, 36% of residents identify as Hispanic/Latino. To compensate for the underrepresentation of the Hispanic community, key responses were weighted so that they represented 36% of responses in determining the goals of the Open Space Vision.

## 3. Detailed Survey Results

The survey results are listed here in the categories “Demographics,” “General Questions,” “Open Space Conservation,” and “Recreation.”

### Demographics

Most of these demographic questions were optional and appeared at the end of the survey. They are included at the beginning here for context. Approximately 20% of the survey participants did not answer the demographic questions.

#### **Do you have a primary residence in the Lake Chelan area? If yes, how long have you lived here?**

This survey reached year-round and seasonal residents, as well as visitors. Nearly one-third of survey participants do not have a primary residence in the Chelan area. One-quarter of respondents have lived in the area for over 20 years, followed by 16% who have lived in the area for 11-20 years. There were 724 responses to this question.

**Table 1. Primary Residence Time**

Time	Number	Percent
Do not have a primary residence in Chelan area	220	31%
Less than one year	22	3%
1 to 5 years	91	13%
6 to 10 years	85	12%
11 to 20 years	115	16%
Over 20 years	181	25%

**Do you have a secondary residence in the Lake Chelan area? If yes, how long have you lived here?**

Only 22% of survey participants indicated that they have a secondary residence in the Lake Chelan area. Of those who have a second home in the area, over 30% indicated that they have lived there for over 20 years. There were 724 responses to this question.

**Table 2. Secondary Residence Time**

Time	Number	Percent
No secondary residence	550	78%
Less than 1 year	12	2%
1 to 5 years	40	6%
6 to 10 years	16	2%
11 to 20 years	37	5%
Over 20 years	49	7%

**Are you visiting Lake Chelan? If yes, how many times have you visited before?**

Nearly 80% of respondents indicated that they live in the Lake Chelan area. For those visiting the area, the majority have visited more than 5 times. Only 2% of the total respondents were visiting the area for the first time. There were 724 responses to this question.

**Table 3. Visitors to Chelan Area**

Number of visits	Number	Percent
Resident, not visitor	546	79%
1st visit	12	2%
2-5 visits	28	4%
Over 5 visits	109	16%

**What is the zip code of your primary residence? City or community of primary residence?**

Of the 564 responses, the five most common zip codes are 98816, 98831, 98801, 98817, and 98802. These zip codes are for Chelan (297), Manson (86), Wenatchee (20), Chelan Falls (9), and East Wenatchee (8). Only 16 responses were from outside of Washington.

**Table 4. Location of Primary Residence**

Zip Code	Number	City
98816	297	Chelan
98831	86	Manson
98801	20	Wenatchee
98817	9	Chelan Falls
98802	8	East Wenatchee

### What is your gender?

Of 577 respondents, 64% were female (367), and 36% were male (210).

### What is your age? (Survey question: What year were you born?)

The average age of participants is 51. Just over 20% of respondents were 35 or younger, and 22% were over 65. Many of those who took the survey through local high schools did not answer this question, so the number of responses from young people is likely higher than indicated here. There were 566 responses to this question.

**Table 5. Age Breakdown**

Age Range	Number	Percent
Under 18	14	2%
19 to 35	105	19%
36 to 50	140	25%
51 to 65	184	33%
Over 65	123	22%

### What is your race/ethnicity?

76% of respondents identified themselves as white/non-Hispanic, followed by 19% who identified themselves as Hispanic. Compared to the demographics of the study area where the Hispanic population represents 36% of residents, Hispanic survey participants were underrepresented. There were 559 responses to this question.

**Table 6. Race/Ethnicity Breakdown**

Race/Ethnicity	Number	Percent
White/Non-Hispanic	426	76%
Hispanic	104	19%
Multiple	15	3%
American Indian/Alaska Native	4	1%
Asian/Pacific Islander	5	1%
Black/African American	1	0.2%

## What is your total annual pre-tax income (for all household members combined)?

Approximately one-third of respondents came from households earning \$49,999 or less annually. An additional one-third of respondents categorized themselves in the household income level of \$50,000 to \$99,000. The remaining one-third of participants come from household income levels of \$100,000 or more. There were 517 responses to this question.

**Table 7. Breakdown of Household Income**

Household Income	Number	Percent
Less than \$20,000	29	6%
\$20,000 to \$34,999	57	11%
\$35,000 to \$49,999	83	16%
\$50,000 to \$74,999	94	18%
\$75,000 to \$99,999	79	15%
\$100,000 to \$199,999	127	25%
\$200,000 or more	48	9%

## Number of children (under age 18) in your household?

Over half of the participants indicated that they do not have children under 18 in their household. 14% of participants have two children in their household, followed by 12% of participants who have one child in their household. There were 573 responses to this question.

**Table 8. Number of Children (Under 18) in Household**

Number of children	Response	Percent
None	338	59%
1 child	70	12%
2 children	83	14%
3 children	49	9%
4 children	19	3%
More than 4	14	2%

## Number of people in your household who use ADA-accessible facilities?

Out of the 410 responses, 62 participants (15%) indicated that at least one family member needs ADA-accessible facilities.

## General Questions

### What do you love most about the Lake Chelan area? (two words maximum)

Participants were asked to list what they love most about the Lake Chelan area. In both the English and Spanish surveys, the top result was the lake. Other frequently mentioned words were beauty, parks, the climate, and the people.







## Open Space Questions

### Please rank the top three priorities you think are most important for the Lake Chelan Area.

This question was used to establish which community goals to map through the Open Space Vision process. The selection of these suggested goals was based on input at the first community meeting in fall of 2016. Survey participants were asked to choose their top three priorities among nine options increasing connectivity of protected lands; increasing recreational access in the foothills; protecting iconic views; protecting forests; promoting community health through accessible parks and trails; preserving agricultural land; protecting wildlife habitat; increasing recreational access to the lake; and protecting water quality.

Results below are shown with Hispanic weighting already calculated. That is, the results below reflect 36% representation for responses from Hispanic participants. Totals are shown for 1<sup>st</sup>, 2<sup>nd</sup>, and 3<sup>rd</sup> choices separately and totaled together. For “choice ranked total” first choice responses were weighted most heavily (given full weight); second choice responses were given one-half weight; and third choice responses were given one-third weight.

Because three of the priorities involved access to the outdoors, a “merged” priority was created to promote community health through increasing access to trails, parks, and the lake. Of these access priorities, access to the lake is, by far, the greatest concern for community members. In fact, access to the lake on its own would have been the second highest priority even without merging the access goals. The final list of top open space goals was:

1. Protect water quality;
2. Promote community health through increasing access to trails, parks, and the lake;
3. Protect wildlife habitat; and
4. Preserve agricultural land.

Although not shown here, Hispanic participants overall ranked access, particularly access to the lake, as their most important goal, above protecting water quality.

**Table 8. Ranking of Open Space Priorities**

Value	1st	2nd	3rd	Total	Choice Ranked Total
Water	395	162	177	733	534
<i>ACCESS TOTAL*</i>	254	247	308	809	479
Lake access	169	93	84	346	243
Agriculture	119	155	106	379	231
Access for health	58	115	156	328	166
Wildlife	56	110	84	250	138
Forests	55	73	90	218	121
Views	52	82	71	205	116
Foothills access	28	39	68	135	69
Connectivity	23	52	36	111	61

\*Access total equals the combined votes for lake access, foothills access, and promoting community health through accessible parks and trails.

**Table 9. Top Four Open Space Priorities**

Value	Rank Weighted Total	Percent
Water	534	39%
Access Total	479	35%
Agriculture	231	17%
Wildlife	138	10%

**Please elaborate on the value that you ranked your FIRST priority. Why is this most important?**

Many participants focused on the importance of public access, maintaining pristine water quality for Lake Chelan, the value and importance of agriculture, and sustaining the environment and wildlife. Additional comments included prioritizing affordable housing and forest management to minimize wildfires. A selection of survey comments:

- *Lake Chelan and its incredibly clear water is one of our most valuable assets*
- *Residents of Chelan unable to walk along lake shore. Private homes and RV park should not be allowed to have exclusive use of shoreline.*
- *This clean lake is the foundation of the valley.*
- *Number one priority should be affordable housing.*
- *I believe public recreation is incredibly important for a community to thrive and be healthy. Diversity in the recreational opportunities is essential.*
- *There is not enough public lake access and the crowds get very concentrated in those few spaces.*
- *Wildlife is the barometer indicating the health of the area. When wildlife suffers, everyone suffers, whether by air quality (forest fires, e.g.) or pollution.*
- *Trails are good for locals and visitors alike and promote community through connectivity.*
- *Agriculture is what attracts people to the Chelan area.*
- *No tenemos suficientes opciones para participar en actividades de salud como familia / We do not have enough options to participate in health activities as a family.*
- *La agricultura es muy importante para los trabajos / Agriculture is very important for jobs.*

**What are the local places/areas that have special meaning to you?**

When participants were asked to list places with special meaning, parks and the lake were frequently mentioned. Other areas of special meaning include Riverwalk Park, Don Morse Park, Lakeside Park, the Butte, and Echo Ridge.

# parques



## Recreation Questions

### Do you participate in any of the following activities on Lake Chelan?

This question was asked to better understand how users interact with Lake Chelan. Participants could select all lake activities that apply to them. Overall, the most popular lake activity is swimming (70%). Swimming was followed by boating (46%), canoeing/kayaking (32%), then waterskiing/jet skiing (22%).

White, non-Hispanic residents are much more likely to participate in recreational activities in the lake. While both those who identified themselves as Hispanic and those who identified as white/non-Hispanic rank swimming as the most popular activity in the lake, followed by boating, Hispanic respondents were

more likely to waterski or jetski than to canoe or kayak, while white/non-Hispanic participants were much more likely to canoe or kayak.

**Table 10. Participation in Lake Activities (Overall)**

Activity	Number	Percentage
Waterskiing/jetskiing	162	22%
Canoeing/kayaking	232	32%
Boating	336	46%
Swimming	504	70%

**Table 11. Participation in Lake Activities (by Race/Ethnicity)**

Activity	Hispanic	White, Non-Hispanic
Waterskiing/jetskiing	18%	29%
Canoeing/kayaking	14%	45%
Boating	30%	62%
Swimming	67%	87%

**How strongly do you agree or disagree with the following statement? “There is already adequate public access to the shores of Lake Chelan.”**

Survey participants asked to rank the following statement on a scale of 1-5 (with 1 indicating strong disagreement and 5 indicating strong agreement): “There is already adequate public access to the shores of Lake Chelan.”

Only 24% of participants agree that there is adequate public access to the shores of Lake Chelan. Nearly one quarter of participants were neutral. 52% disagreed or strongly disagreed. Although not shown here, Hispanic respondents disagreed slightly more strongly (2.7 average) than white, non-Hispanic respondents (2.5 average).

**Table 12. Agree That There Is Already Adequate Public Access to the Lakeshore**

Agree with statement?	Number	Percentage
Strongly disagree	155	26%
Disagree	157	26%
Neutral	144	24%
Agree	94	16%
Strongly agree	50	8%

## If you use local trails, what is the average number of days per month you use them? (Summer/Winter)

This question captures seasonal trail use in the Lake Chelan Area. Overall, the summer months are more popular for trail use, with survey respondents averaging 7 days per month of trail use in the summer, compared to 5 days per month of trail use in the winter.

## What prevents you from using trails more frequently?

This question aimed to understand all existing barriers for trail use. Survey participants were able to select all that applied. Out of 724 responses, 31% of participants are unsure of where trails are. Additional barriers include that trails are not convenient (15%); respondents have no interest in trails (12%); and that physical disabilities prevent use (7%).

When categorized by race/ethnicity, nearly half (46%) of participants who identified themselves as Hispanic were unsure of where the trails are. Furthermore, 10% of Hispanic respondents felt that trails are unsafe, compared to only 3% of White/Non-Hispanic participants. Other notable differences in answers include trail use, with 26% of White/Non-Hispanic participants saying there are no barriers and they already use trails frequently, as compared to only 14% Hispanic participants. Additionally, 22% of White/Non-Hispanic participants say lack of convenience is a barrier, compared to only 8% of Hispanic participants.

**Table 15. What prevents you from using trails more frequently? (Total responses)**

Reason	Number	Percentage
Trails are unsafe	31	4%
Conflicts with other users	36	5%
Physical disability	53	7%
No interest	84	12%
Not convenient	107	15%
NA--I use trails frequently.	142	20%
Unsure where trails are	225	31%

**Table 16. What prevents you from using trails more frequently? (Responses by Race/Ethnicity)**

Reason	Hispanic	White/Non-Hispanic
Trails are unsafe	10%	3%
Unsure where trails are	46%	36%
Conflicts with other users	8%	5%
Physical disability	5%	10%
No interest	18%	13%
Not convenient	8%	22%

**Table 16. What prevents you from using trails more frequently? (Responses by Race/Ethnicity)**

Reason	Hispanic	White/Non-Hispanic
NA--I use trails frequently.	14%	26%

**If you walk/hike locally, do you do so for recreation, fitness, or commuting?**

Answers to this question indicate that most participants walk/hike for recreation and fitness, while only 9% of participants do so for commuting.

When categorized by race/ethnicity, more white/non-Hispanic participants walk/hike for recreation and fitness than Hispanic participants. A notable difference is also that 22% of Hispanics walk or hike as a form of commuting, as compared to only 7% of White/Non-Hispanic participants. 724 participants responded to this question.

**Table 17. Reason for walking/hiking (total)**

Reason	Number	Percent
Recreation	428	59%
Fitness	381	53%
Commuting	66	9%

**Table 18. Reason for walking/hiking (by race/ethnicity)**

Reason	Hispanic	White/Non-Hispanic
Recreation	64%	76%
Fitness	49%	68%
Commuting	22%	7%

**If you bike locally, do you do so for recreation, fitness, or commuting?**

The largest number of participants bike for recreation (40%), followed by fitness (33%), and commuting (8%). When categorized by race/ethnicity, more Hispanic participants bike for recreation and fitness than compared to White/Non-Hispanics. 724 participants responded to this question.

**Table 19. Reason for biking (total)**

Reason	Number	Percent
Recreation	289	40%
Fitness	239	33%
Commuting	61	8%

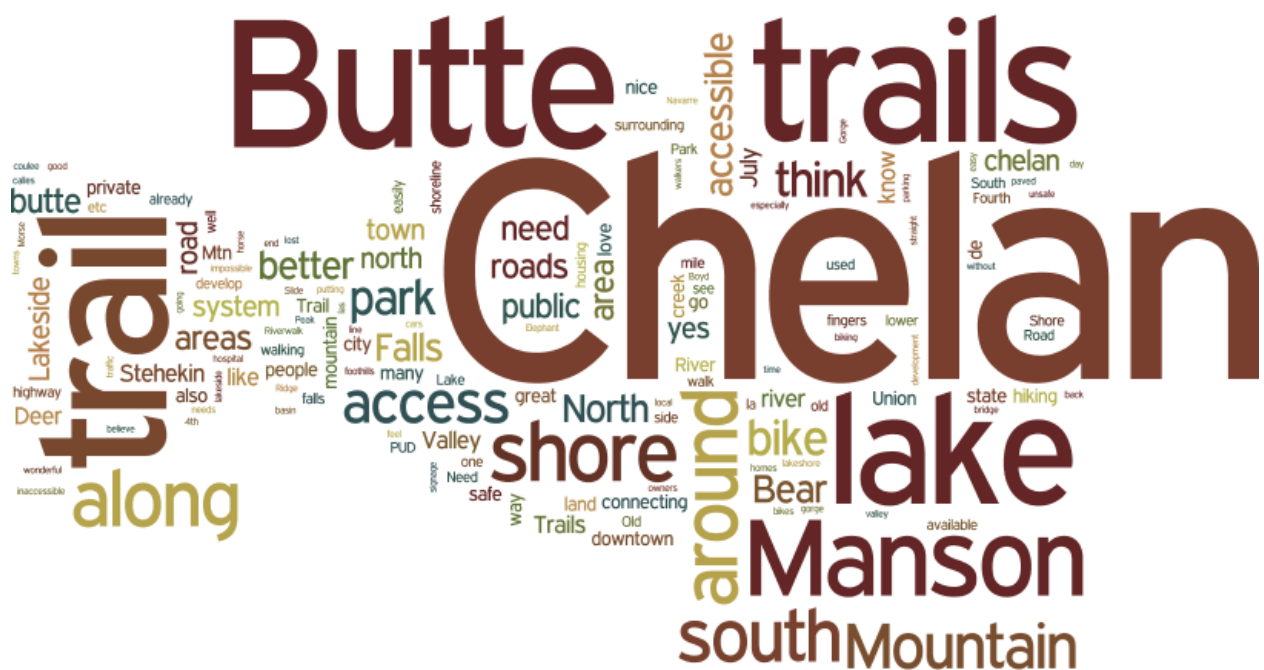


**Table 20. Reason for biking (by race/ethnicity)**

Reason	Hispanic	White/Non-Hispanic
Recreation	54%	47%
Fitness	48%	36%
Commuting	7%	10%

**Are there local areas that are not currently accessible by trails that you think should be? If so, please describe.**

Participants were asked to list any local areas that are not currently accessible by trails that they think should be. Many responses include the Chelan Butte, Bear Mountain, along the lake, Chelan to Manson by bike/pedestrian, Fourth of July Mountain, shore-to-shore trails, the Manson area, and in-town trails. Since there were only 7 Spanish-language results for this fill-in-the-blank section, the responses are merged, below.



**Do you have any final comments?**

Participants were able to provide final comments at the end of the survey. Responses ranged from affordable housing to increasing access for recreation. A selection of survey comments:

- *It's very unfortunate that there is not more public waterfront and an extension of trail access for fitness, commuting and leisure. I wish I could bike/run around the accessible parts of the lake.*

- *Se que es un lugar turistico pero muchas familias que viven aqui toto el ano son forzadas a moverse porque todo esta caro / I know it's a tourist place but many families that live here every year are forced to move because everything is expensive.*
- *Cost of Living is too high, Chelan is slowly losing its work force.*
- *We love Lake Chelan as do our grown kids and their families.*
- *Yes, we need more fire protection. We lost our home last year. We are 73 years old and are rebuilding.*
- *We need to stop impacting small agricultural operations by new neighbors.*
- *Chelan has been my "happy place" for almost 50 years - I'd like it to be that for others for generations to come!*
- *We love Chelan and surrounding areas. We bike around the town but it is not too safe....we often go to Wenatchee because we love that trail...we hope Chelan will consider a safe trail similar to that.*
- *We need paper maps as well as online maps. Signage. Parking.*
- *Need wide, safe roads for walking, running, and biking all the way to 25 Mile Creek and out, to, and around Manson.*
- *Tengan mas actividades para familias enel verano especialmente con ninos / Have more activities for families in the summer especially with children.*

## Appendix 6: Community Workshop Summaries



## Lake Chelan Community Open Space Vision Kick Off Meeting Summary

Wednesday, October 5, 5:30 to 7:30 PM  
City of Chelan Council Chambers  
135 E Johnson Ave, Chelan, WA 98816

### Participants

Amy Morris, The Trust for Public Land (TPL)  
Andrew Fielding  
Barbara Steruer  
Barry DePaoli, Lake Chelan School District  
Bob and Sylvia Gervais  
Bruce Hurst  
Cheryl Roenig  
Clint Campbell, Campbells Resort  
Coron Polley, City of Chelan  
Craig Gildroy, City of Chelan  
Curt Soper, Chelan Douglas Land Trust  
David Morgan, Chelan Douglas Land Trust  
Don and Jane Lloyd  
Erin McCardle, City of Chelan  
Gary and Leslie Myers  
Gary Sterner  
Guy Evans, Lake Chelan Trails Alliance  
Jeff Canty  
Jillian Reiner, SCJ Alliance  
Jim Tuttle  
Joanie and Tim Bankson  
John R. Olson  
Karen Sargeant, City of Chelan  
Karen Stermitz  
Keith Truscott, Chelan PUD  
Kelly Allen, Council  
Ken Dull, Roll and Flow Trail Design  
Larry Day  
Lynette Grandy

Marilyn Clements  
Mary Shevor  
Merick Hill  
Merrilee Canty  
Mickey Fleming, Chelan-Douglas Land Trust  
Mike Coopersmith  
Mitchel Hannon, TPL  
Morgan Pieton  
Paul Schmidt, City of Chelan  
Paul Willard, US Forest Service  
Peri Gallucci, City of Chelan  
Peter Hill, TPL  
Phil Long, LCRF  
Phil Moller, Chamber of Commerce  
Rich Watson, CVCH Board  
Rick and Wendy Kozuback  
Ron Fox, WA Dept Fish & Wildlife (WDFW)  
Rose Olcott  
Rosemary Mouer, MOE  
Ruth Ann Mikels  
Sherry Palmiter  
Stephen Jiran  
Steve Easley  
Steve Kline  
Tammy Lee  
Tim Hellingsart  
Tim Larson, Chelan PUD  
Ty Witt (Dr.), Lake Chelan Hospital  
Wendy Isenhardt, City of Chelan

### Meeting Goals

- 1) **Introduce** the Community Open Space Vision process
- 2) **Gather input** by discussing vision, guiding principles, and conservation/recreation priorities
- 3) **Recruit** additional participants by identifying additional stakeholders and the preliminary technical advisory team

## Meeting Summary

### 1. Welcome and Introductions

City of Chelan Mayor Mike Cooney welcomed a full room of participants. He mentioned that the Lake Chelan Community Open Space Vision has received funding from the State, Icicle Fund, and City of Chelan. Mayor Cooney noted that he wanted to “get on top of open space before it is gone.” He also discussed the importance of developing a plan that will be implemented and that will get something done.

### 2. Overview of Community Open Space Vision Process

Amy Morris and Mitchel Hannon from The Trust for Public Land provided an overview of the Community Open Space Vision Process (see attached meeting slides for more detail). The objectives of the process are to: (1) Determine community priorities for voluntary conservation and recreation planning; (2) Help protect unique local natural and recreational resources; and (3) Build community support for protecting local recreational resources and open space.

The Open Space Vision will combine community input with best available data. The process relies on voluntary, market-based tools to implement; it is not regulatory. The Open Space Vision involves gathering and analyzing community input (interviews, speak outs, community survey, community meetings), collecting data and developing GIS models, weighting criteria and goals based on local input, mapping community priorities, and developing an action plan. The GIS team translates regional community values into objective metrics.

The Trust for Public Land and other partners are asking community members (stakeholders) to participate in three more meetings over the next year. They are also recruiting a local “technical advisory team” (TAT) to assist with mapping (reviewing data and preliminary results).

### 3. Review of Preliminary Outreach Results

Amy then reviewed the preliminary results of the community survey and speak outs (interactive tabling and poster activities at community events). There were 527 survey responses and 409 participants in the speak outs for a total of 936 responses. This is a great level of participation from a relatively small community. Here are some key findings (see more in attached meeting slides):

- Demographics (survey only): 75% of responses from residents (primary or second home), 25% from visitors; 64% women; 93% white, non-Hispanic; 77% have no children under 18 in household
- Community is very active! In the lake: 93% swimming, 65% boating. In addition, 83% walk/hike for recreation and 74% for fitness.
- Uncertainty about trail locations: 40% don't use trails more because they are unsure where they are
- Major concern about lake access: 57% think public access to the lake is not adequate; only 22% think it is adequate

Word cloud for “What do you love most about Lake Chelan area?”



Final goals (to be mapped) for the Community Open Space Vision were determined based on both survey results and speak out input. Weighted and unweighted votes are shown in parentheses. (First choice votes given full weight; second choice given 1/2 weight; and third choice given 1/3 weight.) The final goals are:

1. **Protect water quality** (559, 682)
2. **Promote community health through increasing access to trails, parks, and the lake** (333, 599)
3. **Protect wildlife habitat/natural lands** (168, 308)
4. **Preserve agricultural land/working lands** (166, 302)

#### 4. Rapid Fire Presentation of Community Ideas

Next several community members gave 1-2 minute rapid fire presentations of ideas related to the Open Space Vision Process.

- Erin McCardle, City Council presented an idea for a year-round recreation plaza at Don Morse Park.
- Gary Sterner discussed possibilities for creating road-end public lake access. This would require negotiation with landowners.
- Karen Sargeant, City of Chelan Parks, Rec and Community Services Director presented an idea for bringing a stage amphitheater back to Don Morse Park.
- Phil Long from Lake Chelan Research Institute discussed water quality monitoring and threats to Lake Chelan’s water quality (see attached meeting slides for more detail).
- Guy Evans focused on the importance of creating better access to the foothills. He described the Lake Chelan Trails Alliance’s plan for 5 hikes, 5 views of the lake, in 5 days. Access for each of the hikes would require easements through private property.

#### 5. Map Exercise

Amy described the map exercise to the group. Participants were asked to mark up study area maps with answers to the following questions: Where do you live? Where do you work? Where do you spend time outdoors? What do you want to protect? What do you want to connect? Map exercise results are summarized in attachments.

## 6. Goal and Criteria Workshop

Amy gave participants instructions for the goal and criteria workshop. There were four “stations” for discussion of the four Open Space Vision goals. Each goal had a facilitator: David Morgan (Water Quality), Amy Morris (Agriculture), Guy Evans (Recreation), Mitchel Hannon (Wildlife). Participants were asked to go to two of the four stations. They spent 10 minutes at each. Facilitators asked participants to brainstorm ideas for criteria that could help define each goal and any data sources associated with the criteria. At the end of the meeting, attendees were asked to vote for their top 3 priority criteria under each goal. Pink = top priority. Orange = 2<sup>nd</sup> priority. Green = 3<sup>rd</sup> priority. The results of this exercise are included in the attachments.

## 7. Guiding Principles and Vision Exercise

Amy reviewed the purpose of this exercise and introduced some examples of Vision Statements and Guiding Principles for conservation plans (see attaching meeting slides). Guiding principles are beliefs and philosophy intended to guide us toward our mission and vision. The principles should reflect why and how we create the Community Open Space Vision. They should be simple, cohesive, and consensus-based. A vision statement is an aspirational statement about what we want to see at the end of this process—once the Community Open Space Vision is implemented. It should be a catalyst that communications purpose and values.

Participants were asked to focus on filling out a worksheet related to either guiding principles or developing a vision statement. They spent 5-10 minutes independently filling out their chosen worksheet. Then they discussed what they had written in pairs for an additional 3-5 minutes. Before turning in their worksheet, participants were asked to put a star by 1-2 elements of their guiding principles or vision statement that they believe are most important. Draft vision statements and guiding principles based on meeting input are attached. Communications volunteers (Guy, Barry, Marilyn, and Connie) will help revise these drafts before the next community meeting.

## 8. Closing

Amy thanked the group very much for their engagement and enthusiasm. She also reviewed the next steps below.

### Next Steps

- **We need recommendations and volunteers for technical advisory team (TAT) as soon as possible.**  
Please contact Amy ([amy.morris@tpl.org](mailto:amy.morris@tpl.org)) or Mitchel ([mitchel.hannon@tpl.org](mailto:mitchel.hannon@tpl.org)). Current volunteers for the TAT are: Karen Sargeant, Tim Hollingsworth, Ken Dull, Coron Polley, and Paul Willard.
- Amy/TPL will work with volunteers to revise vision statement and guiding principles options
- Amy/TPL to continue local interviews
- Mitch/TPL to begin collecting data for maps (with TAT help)
- TPL to develop draft goal maps
- Next community meeting will be in late January 2017. Exact date/time/location will be announced soon.

### Attachments

- Goal and Criteria Workshop Results
- Study Area Map
- Map Exercise Summary Map
- Vision and Guiding Principles Drafts
- Meeting Slides

## Goal and Criteria Workshop Results

**Table 1. Water Quality Input from Community Meeting**

ELEMENT/CRITERIA	1st	2nd	3rd	Weighted Votes
Reduce non-point source pollution <sup>1</sup>	5	8	6	11.0
Maintain water quality	8	4	3	11.0
Control nutrients	5	3	6	8.5
Remove invasive species (including milfoil)	3	6	5	7.7
Reduce litter	0	1	1	0.8
Improve water quality in Roses Lake, Dry Lake, Wapato, and Chelan	0	0	0	0

**Table 2. Recreation Access (Trails, Parks, Lakes) Input from Community Meeting**

ELEMENT/CRITERIA	1st	2nd	3rd	Weighted Votes
Increase access to the lake (free, open to everyone + amenities)	7	4	3	10.0
Create more access to the Butte (legal routes, Elephant's Head)	7	0	2	7.7
Develop Three Fingers Park	4	4	4	7.3
Increase free access for all	5	0	0	5.0
Evaluate and protect potential public access points	1	3	1	2.8
Create connections from downtown to foothills	0	2	2	1.7
Create Box Canyon Trail and other 25-mile creek trails	1	0	0	1.0
Create hut to Hut from Echo Ridge	0	0	0	0.0
Create connections to key destinations <sup>2</sup>	0	0	0	0.0
<b>ACTION PLAN IDEAS</b>				
Increase awareness of established foothills trails (clearly defined, legal)	3	4	2	5.7
Improve people movement to: trails/lake, parking, shuttles, bike trails to location	1	5	3	4.5
Increase awareness about opportunities for outdoor recreation	0	3	2	2.2
Designate area for leash dog park on lake	1	0	1	1.3
Increase awareness of lake access points (where they are located & navigating conflicts)	0	1	2	1.2
Scale up trail development to match use	0	1	2	1.2
Designate trail over old Chelan Falls Bridge	0	2	0	1.0
Educate private landowners about the benefits of allowing trail access	0	0	2	0.7
Key measure increase in lake access (Astoria) along with development of area (dock, parking)	0	0	2	0.7
Educate users and landowners about trail use (etiquette, liabilities)	0	0	1	0.3

<sup>1</sup> Sedimentation, suspended solids, biological oxygen demand, agricultural runoff, petroleum and solvents

<sup>2</sup> Gorge, State Park, First Creek to Stormy, Deer Mountain, South Shore, North Shore, Echo Ridge to Antilon Lake



Create easements to public land away from lake	0	0	1	0.3
Create a map showing public access, trails, etc.	0	0	0	0
Pedestrian Bridge over old Bebee Bridge Towers	0	0	0	0
Obtain funding to increase purchase of land and/or gain easements	0	0	0	0
Clearly define areas for different types of trail uses to encourage stewardship and decrease conflicts	0	0	0	0

**Table 3. Wildlife Habitat Input from Community Meeting**

ELEMENT/CRITERIA	1st	2nd	3rd	Weighted Votes
Balance recreation vs. wildlife vs. habitat on the Butte	9	4	4	12.3
Protect highly diverse forests / healthy ecosystems	5	6	5	9.7
Protect bald Eagle / Osprey / Owls nest buffers	5	2	3	7.0
Protect native Plants existing and regenerated	4	3	3	6.5
Minimize impacts from invasive plants	1	8	2	5.7
Protect big horn sheep / ungulate movement	2	2	4	4.3
Protect fisheries / streams	0	1	4	1.8

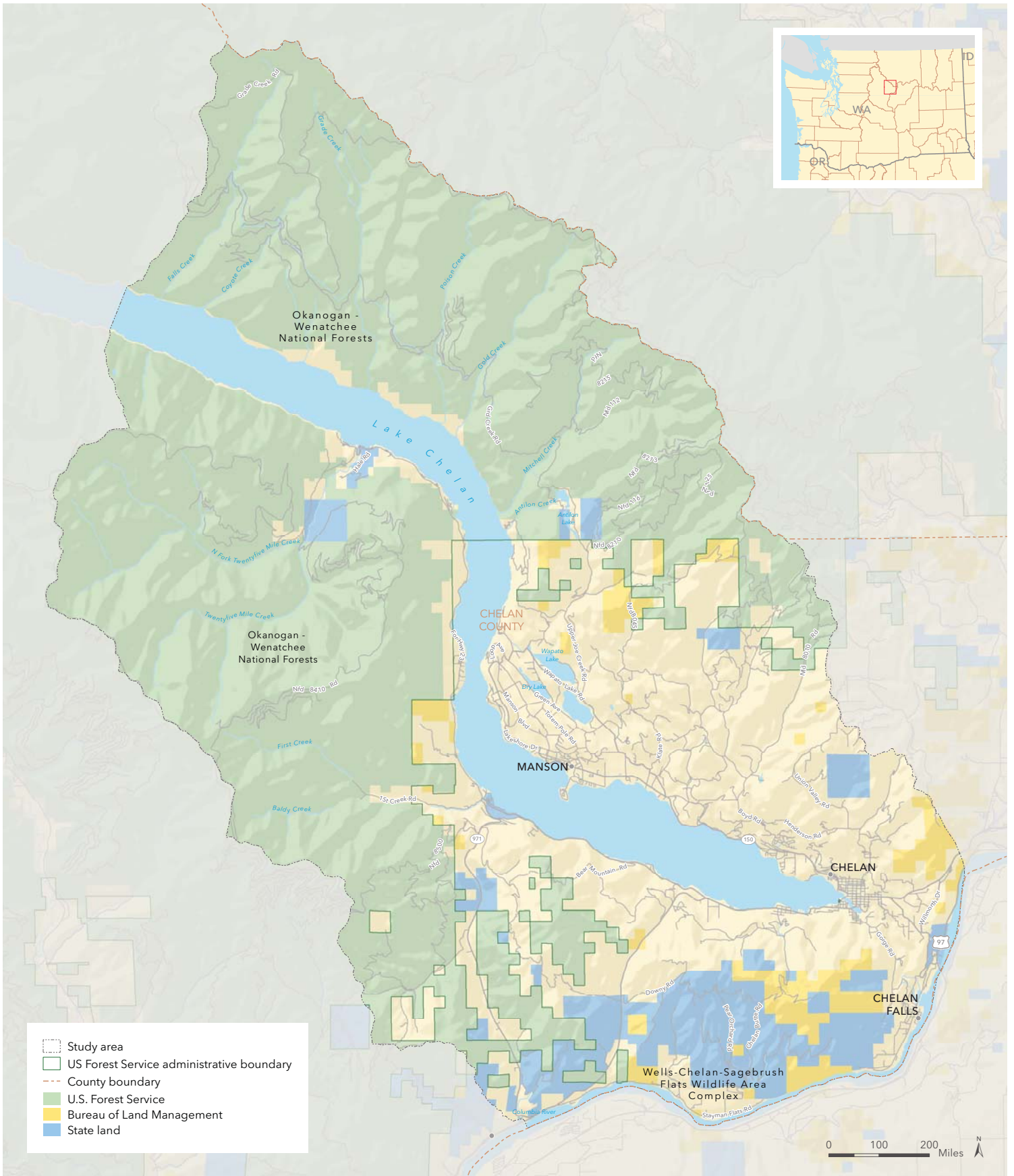
**Table 4. Protection of Working Lands Input from Community Meeting**

ELEMENT/CRITERIA	1st	2nd	3rd	weighted votes
Protect working lands with water availability (water rights)	3	1	6	5.5
Protect areas with less slope	0	1	0	0.5
Protect views of agricultural landscapes	0	0	1	0.3
Reduce runoff from farms	0	0	0	0.0
Protect high quality agricultural soils	0	0	0	0.0
Protect variety of agriculture types (commercial, hobby, pasture, orchard, vineyard)	0	0	0	0.0
<b>ACTION PLAN IDEAS</b>				
Create funding for agricultural conservation easements	7	6	1	10.3
Encourage sustainable farming practices (integrated, co-planting, crop rotation)	3	3	3	5.5
Housing not affordable for labor / hard to find labor	3	0	1	3.3
Improve marketing of local agriculture and agricultural tourism	1	3	1	2.8
Educate about right-to-farm laws	1	2	2	2.7
Create tax incentives and stewardship payments to help farmers	0	2	1	1.3
Build community gardens	0	0	1	0.3
Reduce regulation of farming and farm labor	0	0	0	0
Use agricultural zoning to protect farmland	0	0	0	0
Focus on markets and agricultural economics	0	0	0	0
Build relationships with Future Farmers/4H/Farm to Table	0	0	0	0
Make it more difficult to subdivide working lands and sell for housing	0	0	0	0
Encourage younger generation to stay in farming	0	0	0	0

**Table 4. Protection of Working Lands Input from Community Meeting**

ELEMENT/CRITERIA	1st	2nd	3rd	weighted votes
Encourage growing marijuana/hemp	0	0	0	0

## Study Area Map



# Study Area

## LAKE CHELAN COMMUNITY OPEN SPACE VISION

September 14, 2016. Copyright © The Trust for Public Land. The Trust for Public Land and The Trust for Public Land logo are federally registered marks of The Trust for Public Land. Information on this map is provided for purposes of discussion and visualization only. [www.tpl.org](http://www.tpl.org)



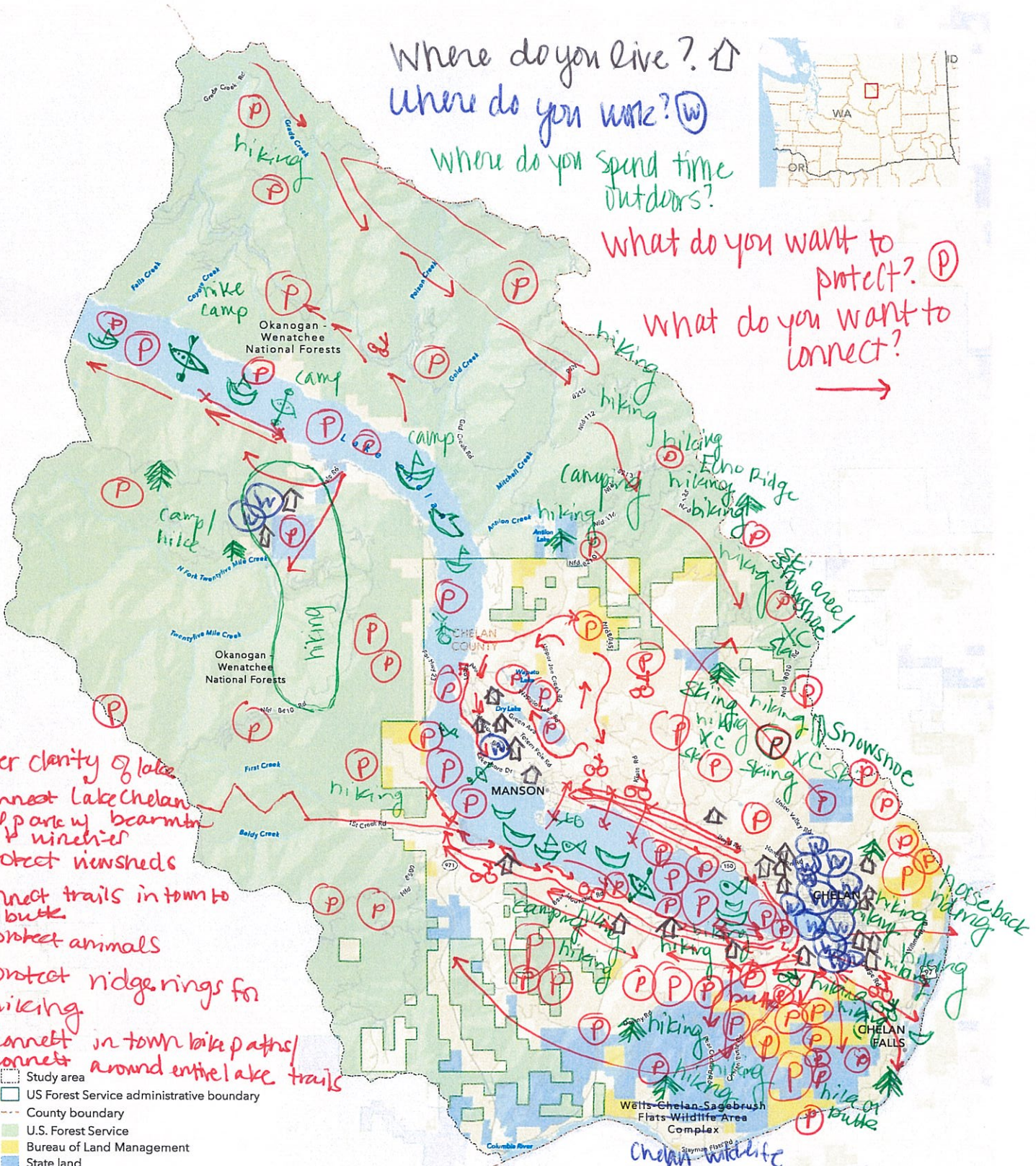
## Map Exercise Summary Map



Where do you live? ↑  
 Where do you work? ⊙  
 Where do you spend time outdoors?



What do you want to protect? ⊙  
 What do you want to connect? →



- ⊙ water clarity of lake
- connect Lake Chelan State park w bears meadows & wilderness
- ⊙ protect viewsheds
- connect trails in town to butte
- ⊙ protect animals
- ⊙ protect ridges/nings for hiking
- connect in town bike paths
- connect around entire lake trails

- Study area
- US Forest Service administrative boundary
- County boundary
- U.S. Forest Service
- Bureau of Land Management
- State land

→ ped. connection from downtown to S. Shore  
 → N. Shore butte to Chelan Falls to Echo Ridge

↑ in Wenatchee  
 ↑ in Wenatchee  
 ↑ in E. Wenatchee

# Study Area

## LAKE CHELAN COMMUNITY OPEN SPACE VISION

September 14, 2016. Copyright © The Trust for Public Land. The Trust for Public Land and The Trust for Public Land logo are federally registered marks of The Trust for Public Land. Information on this map is provided for purposes of discussion and visualization only. [www.tpl.org](http://www.tpl.org)



## Vision and Guiding Principles Drafts



# Lake Chelan Community Open Space Vision

## Vision Statement Exercise

### Draft Options

1. Our vision is to thrive in a region where our water quality and spectacular scenery are protected and where our local communities are a vibrant and self-sustaining mix of small-town character, prosperous agriculture, and world-class recreational opportunities.
2. Our vision is a Lake Chelan area where our unique natural beauty, including our lake, is protected; where residents enjoy year-round access to outdoor recreation; where our small-town character is preserved and agriculture is flourishing; and where residents, businesses, and visitors are drawn to the valley and help our economy thrive because of our excellent quality of life.
3. Our vision is a Lake Chelan area in which our beautiful lake and other exceptional natural resources and our wonderful rural, small-town, and agricultural character are protected and support a vibrant and sustainable economy and world-class recreational opportunities for both residents and visitors.
4. Our community vision is to thrive in a region where our lake, spectacular scenery, natural resources, small-town character, prosperous agriculture, and recreation opportunities will be preserved for future generations.

access affordable agriculture area  
beauty butte chelan community  
connect creek development economic focus growth  
housing keep lake land life mile mix  
mountain natural open opportunities  
outdoor parks people plan possible preserve private  
protect public quality  
recreation ridge rural season small space  
surrounding sustainable town trails valley  
water work year-round years





## Meeting Slides

# Lake Chelan Open Space Vision

October 2016



# Conveners

---

- City of Chelan
- Lake Chelan Trails Alliance
- Chelan-Douglas Land Trust
- The Trust for Public Land



# Meeting Goals

---

1. **INTRODUCE.** Introduce the Community Open Space Vision Process
2. **GATHER INPUT.** Begin discussing vision, guiding principles, and conservation/recreation priorities
3. **RECRUIT PARTICIPANTS.** Gather names for additional stakeholders, identify preliminary technical advisory team

# Agenda

---



- Welcome and Introductions
- Overview of Meeting Goals
- Community Open Space Vision Process
- Review of Preliminary Community Survey Results
- Presentation of Community Ideas (rapid fire)
- Map Exercise
- Goal and Criteria Workshop
- Guiding Principles and Vision Exercise
- Next Steps and Closing

# Community Open Space Vision

## **Will:**

- Combine community input with state-of-the-art mapping and modeling and the best available data
- Provide a set of tools to guide land conservation and recreation planning
- Identify opportunities to meet multiple goals
- Prioritize areas for voluntary, market-based conservation

## **Will NOT:**

- Map land use prohibitions
- Be determined by one (or just a few) perspectives
- Be limited to protecting wildlife
- Involve condemning or taking land/private property
- Start from scratch. It will build on the PROS plan and the Lake Chelan Valley Public Trails Comprehensive Plan.

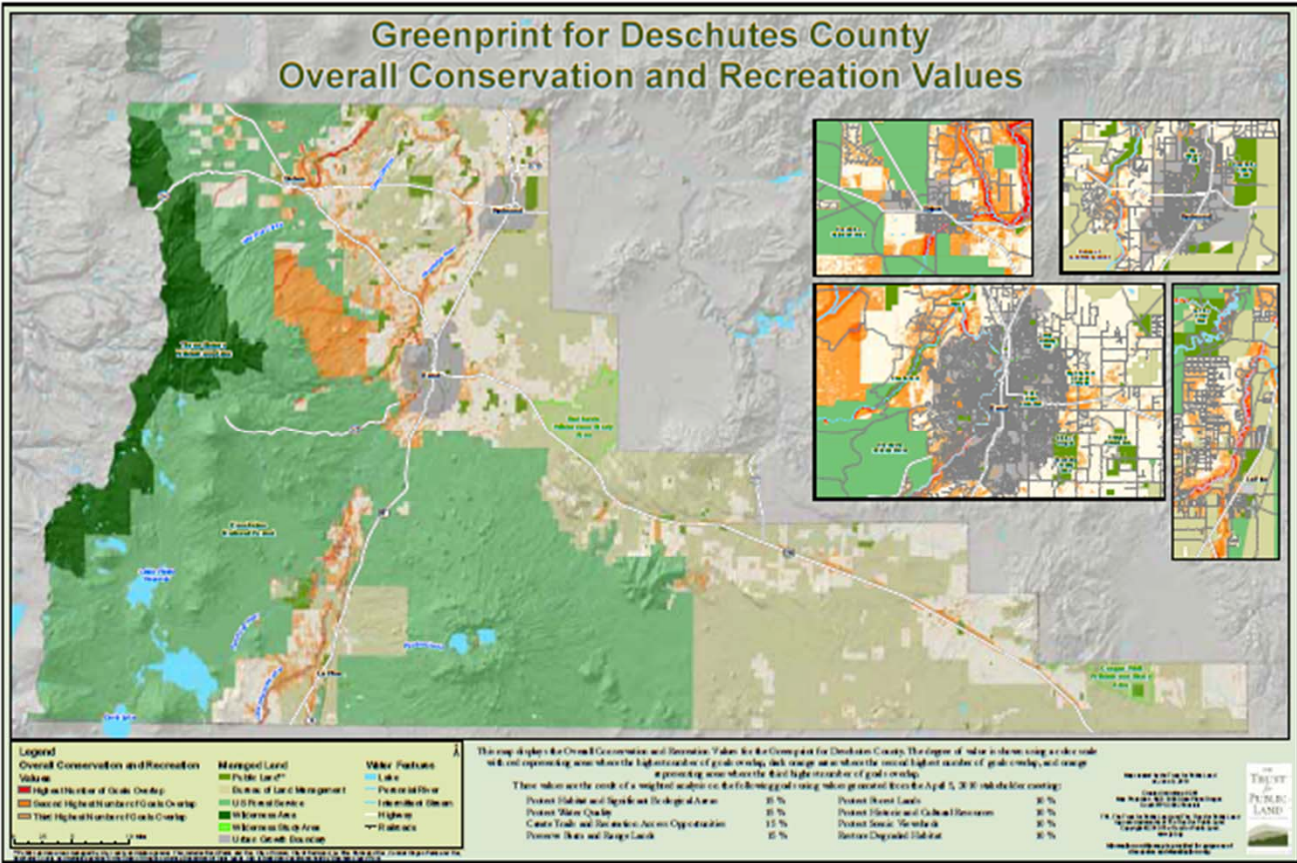
# Community Open Space Vision Objectives

---

- Determine community priorities for voluntary conservation and recreation planning
- Help protect unique local natural and recreational resources
- Build community support for protecting local recreational resources and open space



# How do you create an Open Space Vision?

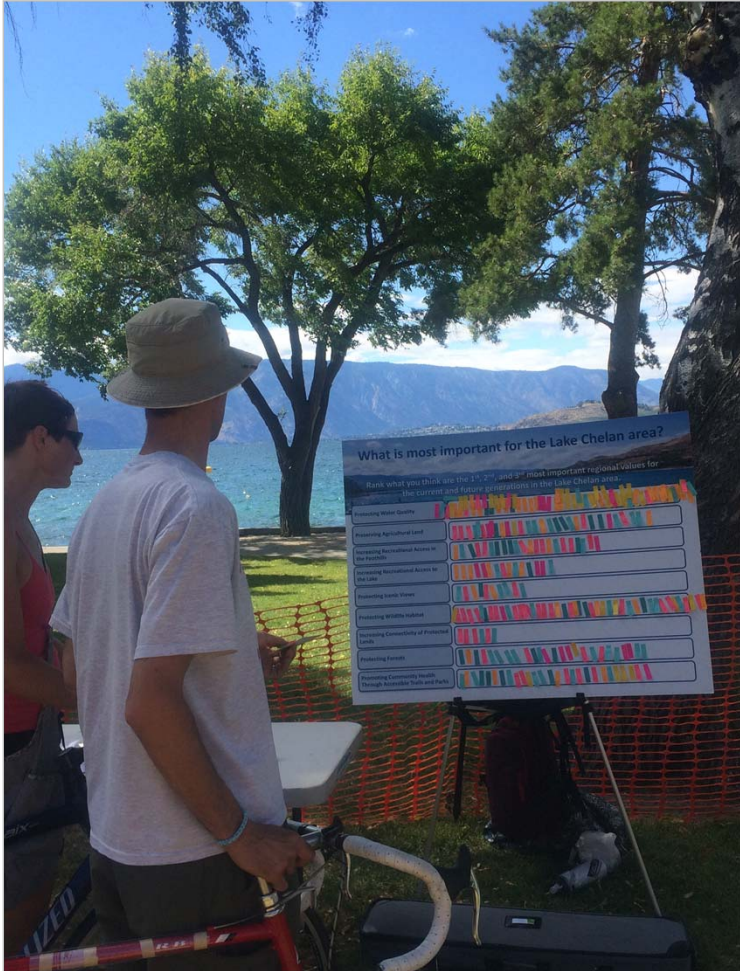
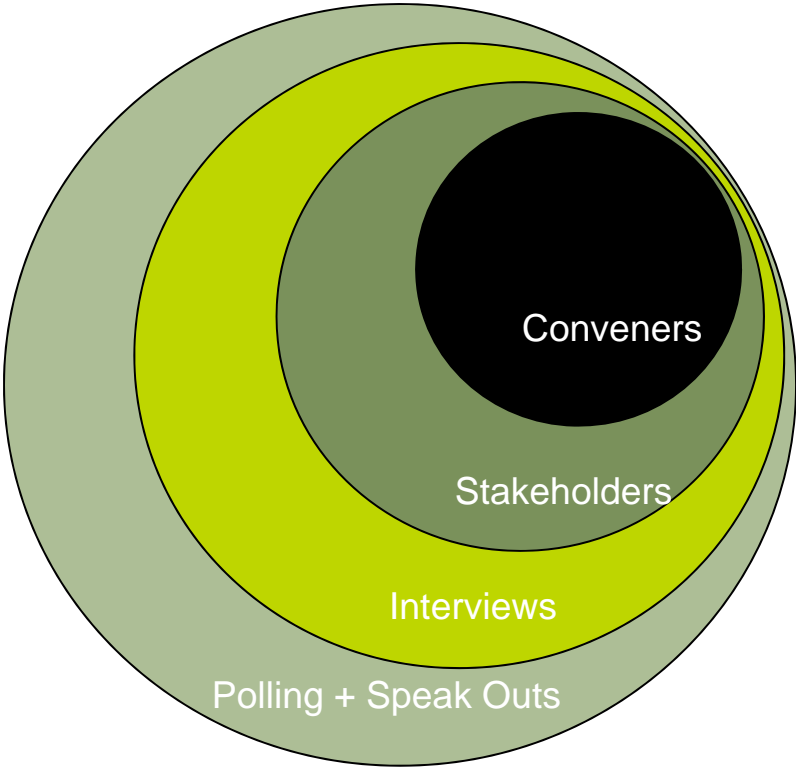


# Open Space Vision Steps

---

1. Get community input (interviews, speak outs, community survey, stakeholder meetings)
2. Analyze community input
3. Collect data related to open space goals and translate data into GIS models
4. Weight criteria and goals based on community input
5. Create maps that reflect community priorities
6. Develop an implementation plan
7. Prepare a report that includes maps, community priorities, and action steps

# Community Involvement



# Role of Stakeholders

---

- Help us gather best possible community input
- Help with outreach
- Identify and review draft conservation goals
- Provide guidance to a Technical Advisory Team on the Open Space Vision maps
- Vote on final map weighting
- Help develop an action plan
- Time commitment: 3-4 more meetings over the next 9-12 months

# Open Space Vision Analysis and Mapping

---

- Translates regional values into objective metrics.
- Reflects community's vision and unique open space resources.
- Offers a unique blend of science and preference.





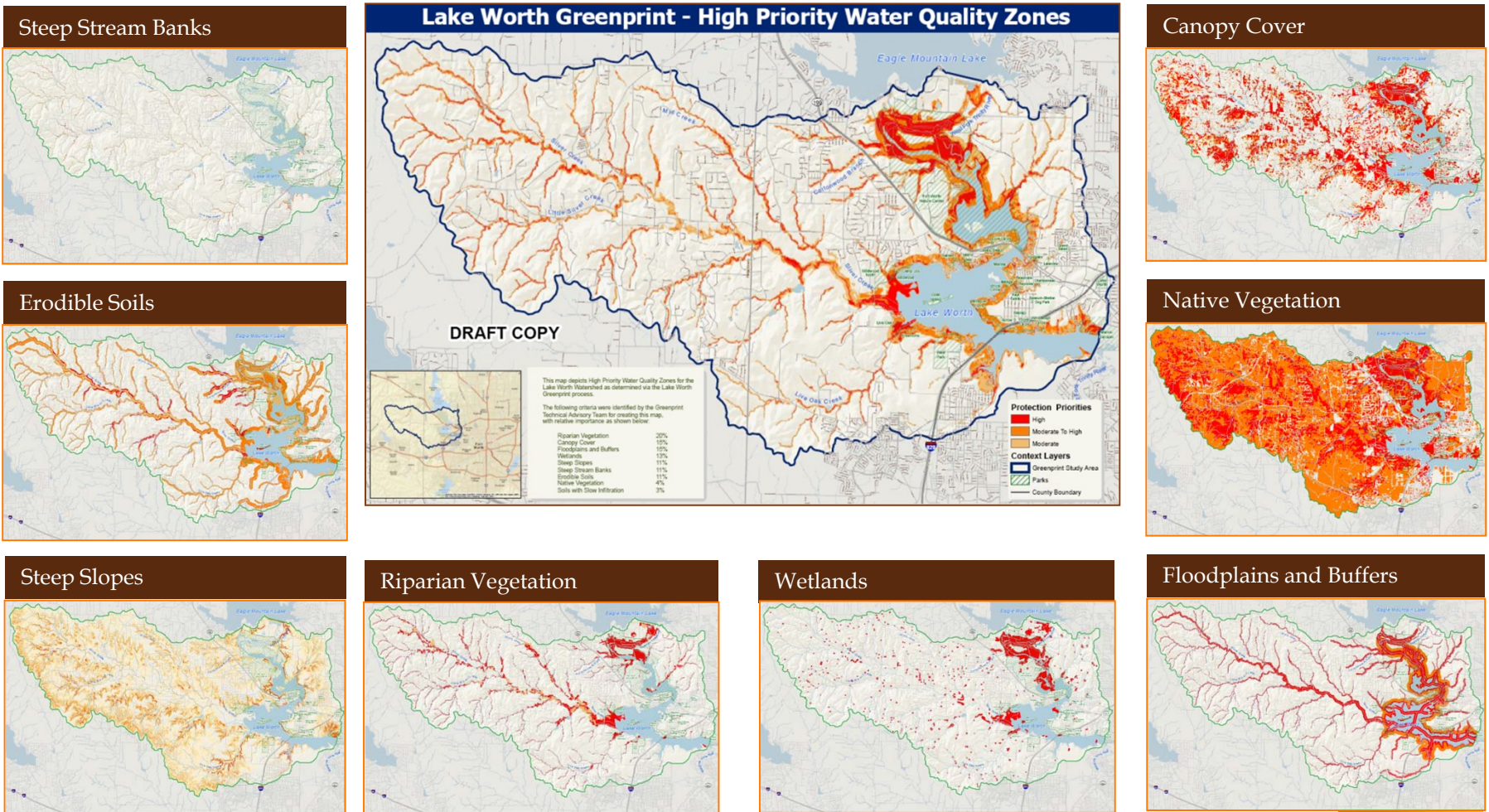
# Analysis and Mapping Approach

---

Develop information that can be acted on: rank areas/parcels by how well they meet vision goals

- **Goal:** Overall community value related to open space
  - For example: Protect traditional agricultural lands
- **Criteria:** Location-specific characteristic that is measurable and mappable
  - For example: Irrigated parcels between 0.5 and 20 acres in size

# Example Goal and Criteria



# Role of the Technical Advisory Team (TAT)

---

Provide expert review and advice regarding design, data input, rationale, outcomes, and mapping.

## **Responsibilities:**

- Participate in TAT meetings (by phone/computer)
- Verify the completeness and appropriateness of analysis methodology
- Recommend best available data sources
- Help ensure that defensible science is used for all models and assumptions
- Review input data and model results for accuracy and currency
- Determine relative importance of each criteria



# Outreach Results

---

- 527 community responses + 409 speak out responses = **936 total responses**
- 75% of responses from residents (primary or second home), 25% from visitors
- 64% women
- 93% white, non-Hispanic
- 77% have no children under 18 in household

# Outreach Results – Outdoor Activities

---

- Active community!
- Lake recreation: 93% swimming, 65% boating
- 83% walk/hike for recreation and 74% for fitness
  - 40% don't use trails more because they are unsure where they are
- 81% bike for recreation and 63% for fitness
- 57% think public access to the lake is not adequate; only 22% think it is adequate

# What do you love most about the Lake Chelan area?

---

access activities agriculture air area **beauty** butte chelan  
clean clear community country family fresh fun hiking hills  
home **lake** landscape lifestyle **mountains**  
natural open opportunities outdoor park peaceful  
people quality quiet recreation relaxation rural scenery  
seasons sky small space sun sunshine swimming town  
views vistas **water** **weather** wilderness wine wineries

# Biggest Concerns

---

access affordable beach bike building business  
care clean cost crowding **development**  
economy enough **fire** growth homes hospital  
**housing** jobs keeping lack **lake** land  
living management open overcrowding overdevelopment  
**parking** people planning pollution population  
preserve prices protect **public** quality roads safety season  
space summer taxes tourism tourists **traffic** trails  
**water** wildfires

# Areas with Special Meaning

---

access area around bay beach boat butte  
chelan city course creek docks don downtown  
echo family forest gorge hiking hills lake lakeside local  
manson mile morse mountain park point public  
ridge river riverwalk roads shore south special state  
stehekin swim town trails uptake valley views walk  
wapato whole willow wineries

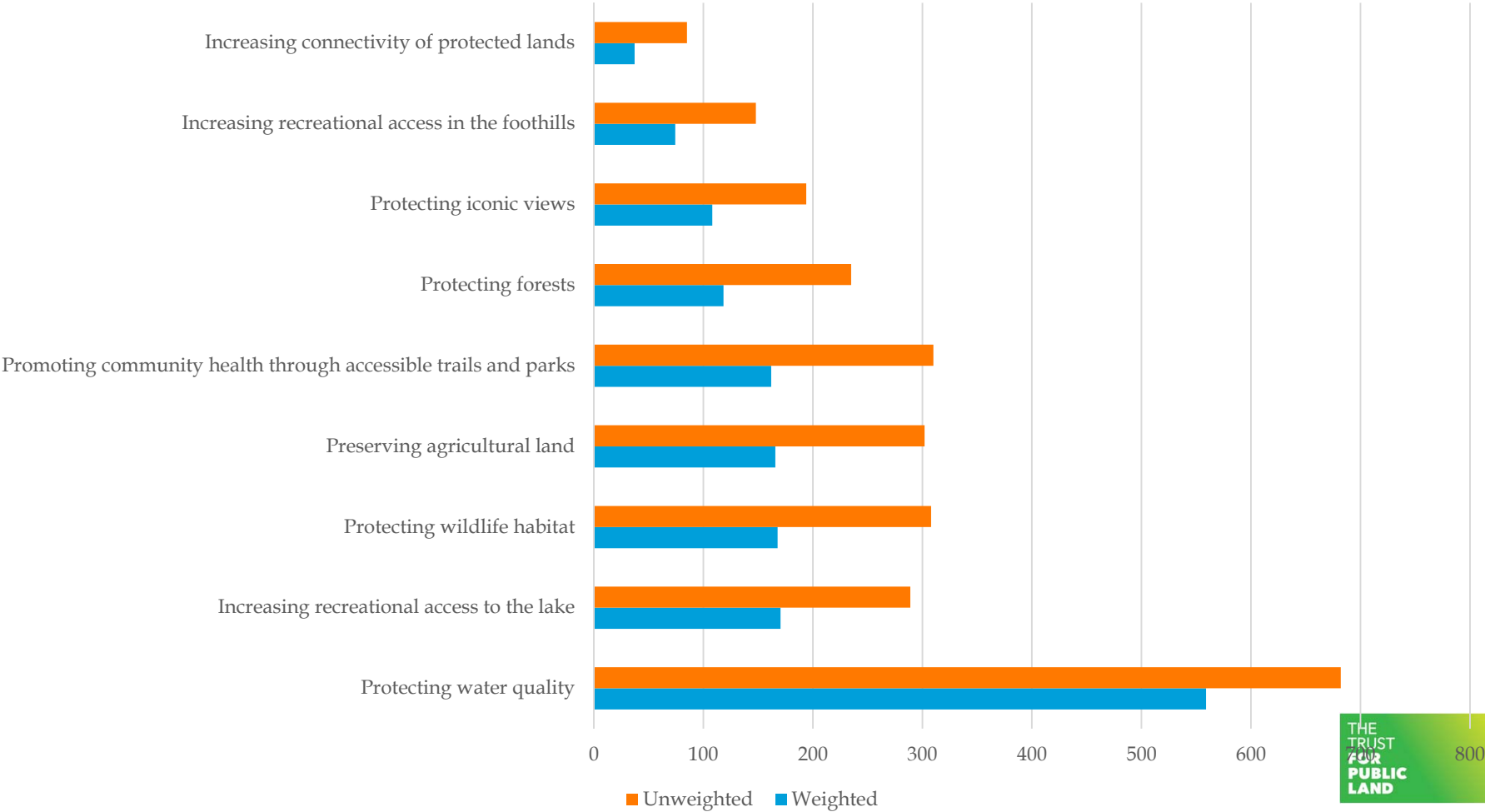
# Areas for More Trail Access

---

access along areas around bear better  
bike **butte chelan** city connecting creek deer  
develop downtown falls gorge highway hiking housing **lake** lakeside land love  
**manson** mile mountain mtn nice north park  
people private public river road safe shore shoreline south  
state stehekin sure system think town **trail** union valley  
walking

# Priorities for Lake Chelan Area

Priorities for Lake Chelan Area (survey and speak out results)



# Open Space Vision Goals

---

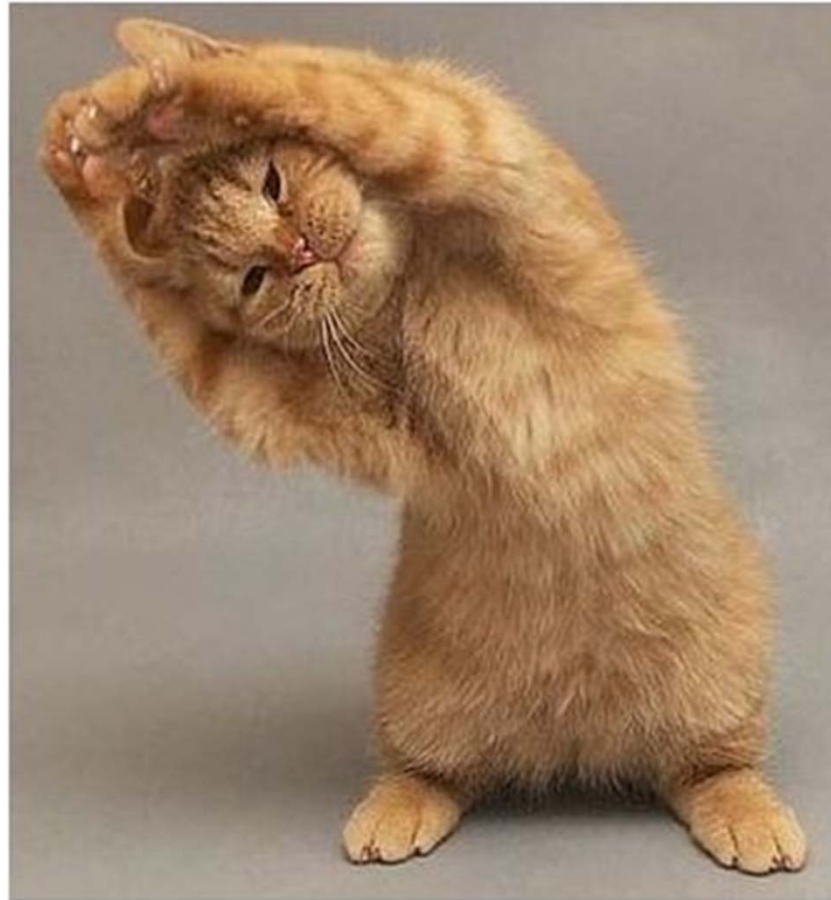
1. Protect water quality (559, 682)
2. Promote community health through increasing access to trails, parks, and the lake (333, 599)
3. Protect wildlife habitat (168, 308)
4. Preserve agricultural land (166, 302)

## ➤ **Protect and Connect**



# Stretch Break!

---



# Presentation of Community Ideas (rapid fire)

---

1. Erin McCardle – Year-round recreation plaza
2. Gary Sterner – Road end lakeshore access
3. Karen Sargeant – Don Morse concert venue
4. Philip Long – Water quality
5. Guy Evans – Trails

# Lake Access – Gary Sterner

---

- Unmarked Public ROW leading to the lake has been an issue for years. Not the first time.
- It's a big deal that the Chelan County Commissioners decided to survey a few of the Public Access points to the lake in the Manson area. South Harris Street, Quetilquason Road, Hyacinth Road and others have been surveyed and marked.
- There are probably nine public access points in the Manson area.
- Chelan County is not ready to use the surveyed and marked access points for public recreation until safety and maintenance issues are resolved.
- Interested parties in the Manson area include the County Commissioners, the County Public Works, the Manson Parks and Parks Board, The Manson Community Council, the public and the private land owners.
- The City of Chelan draft version of Appendix C: City of Chelan Shoreline Public Access Plan, dated July 2016, identifies three access points and the plans to develop two of them. The sites with plans are the end of Dietrich Road and Water Street/Green Dock. The other site is the end of Park Street.
- In summary, there are potential public access points to Lake Chelan for recreation, there a number of interested parties with varied concerns, and there is a lack of money to develop the sites. We could use some help.



# Lake Chelan Community Open Space Vision: *Water Quality*



Phil Long  
Lake Chelan Research Institute



# Lake Chelan Community Open Space Vision: *Water Quality*

- Open space matters to water quality

Phil Long  
Lake Chelan Research Institute



# Lake Chelan Community Open Space Vision: *Water Quality*

- Open space matters to water quality
- We are ultimately responsible for what goes into the lake

Phil Long  
Lake Chelan Research Institute



# Lake Chelan Community Open Space Vision: *Water Quality*

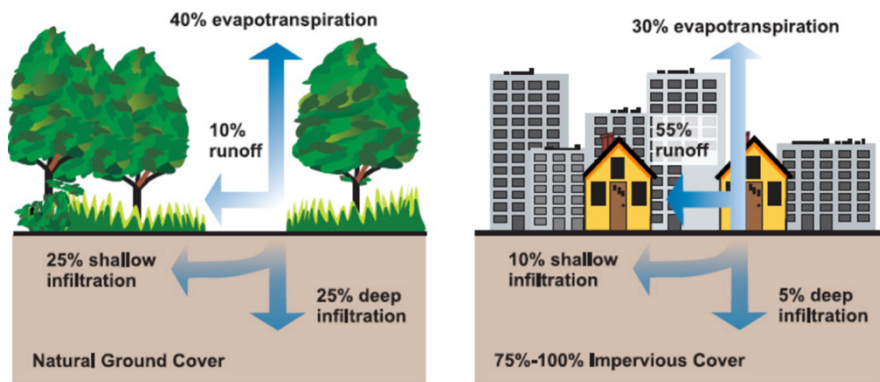
- Open space matters to water quality
- We are ultimately responsible for what goes into the lake
- We need to know what controls water clarity

Phil Long  
Lake Chelan Research Institute

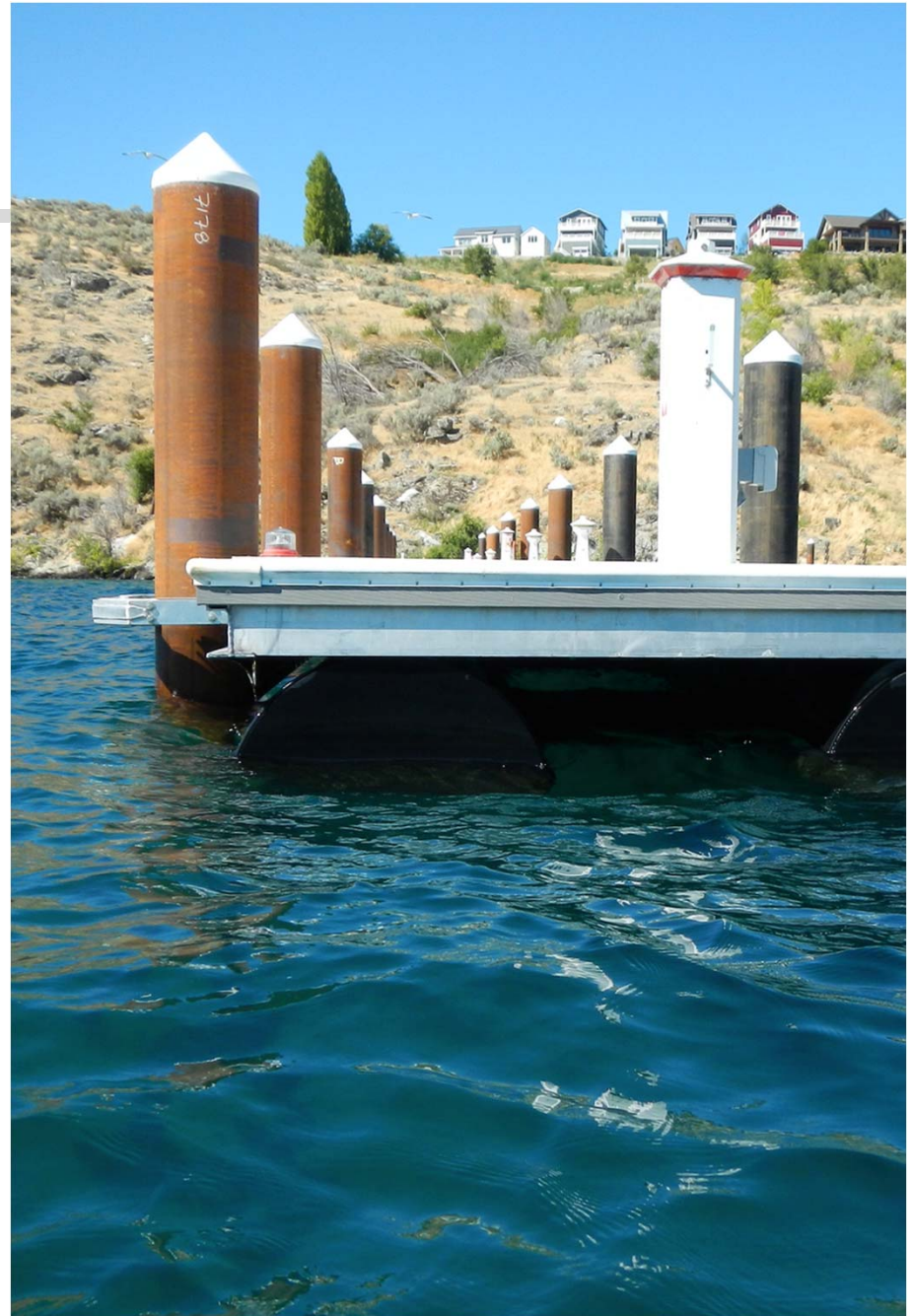


## *Open Space Matters:* Urbanization increases the variety and amount of pollutants carried into streams, rivers, and lakes

- Nutrients from soil/rock, animal waste and failing septic systems
- Agricultural runoff
- Oil, grease, and toxic chemicals from motor vehicles
- Road salts
- Heavy metals from roof shingles, motor vehicles, and other sources
- Sediment



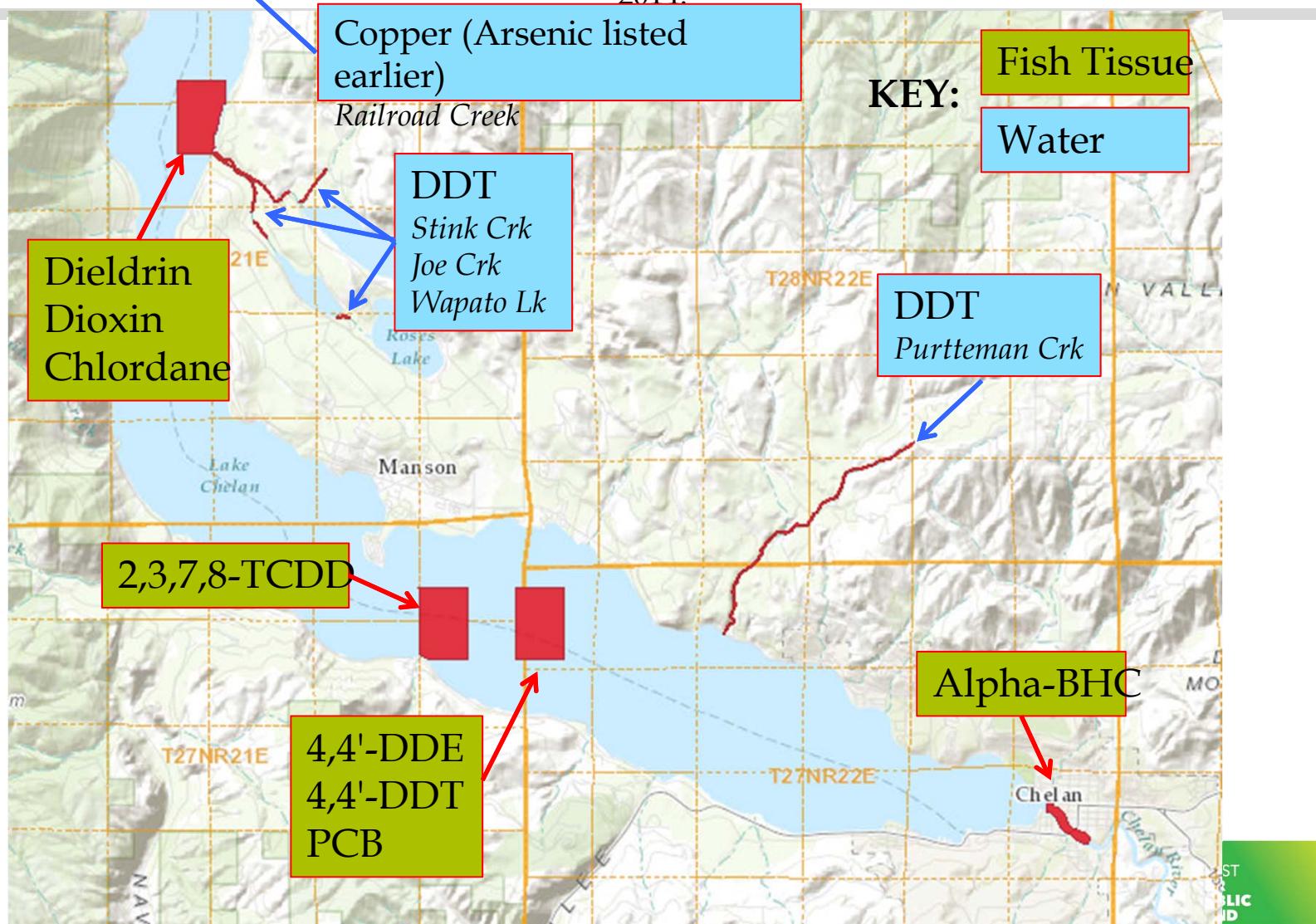
Modified from: EPA 841-F-03-003





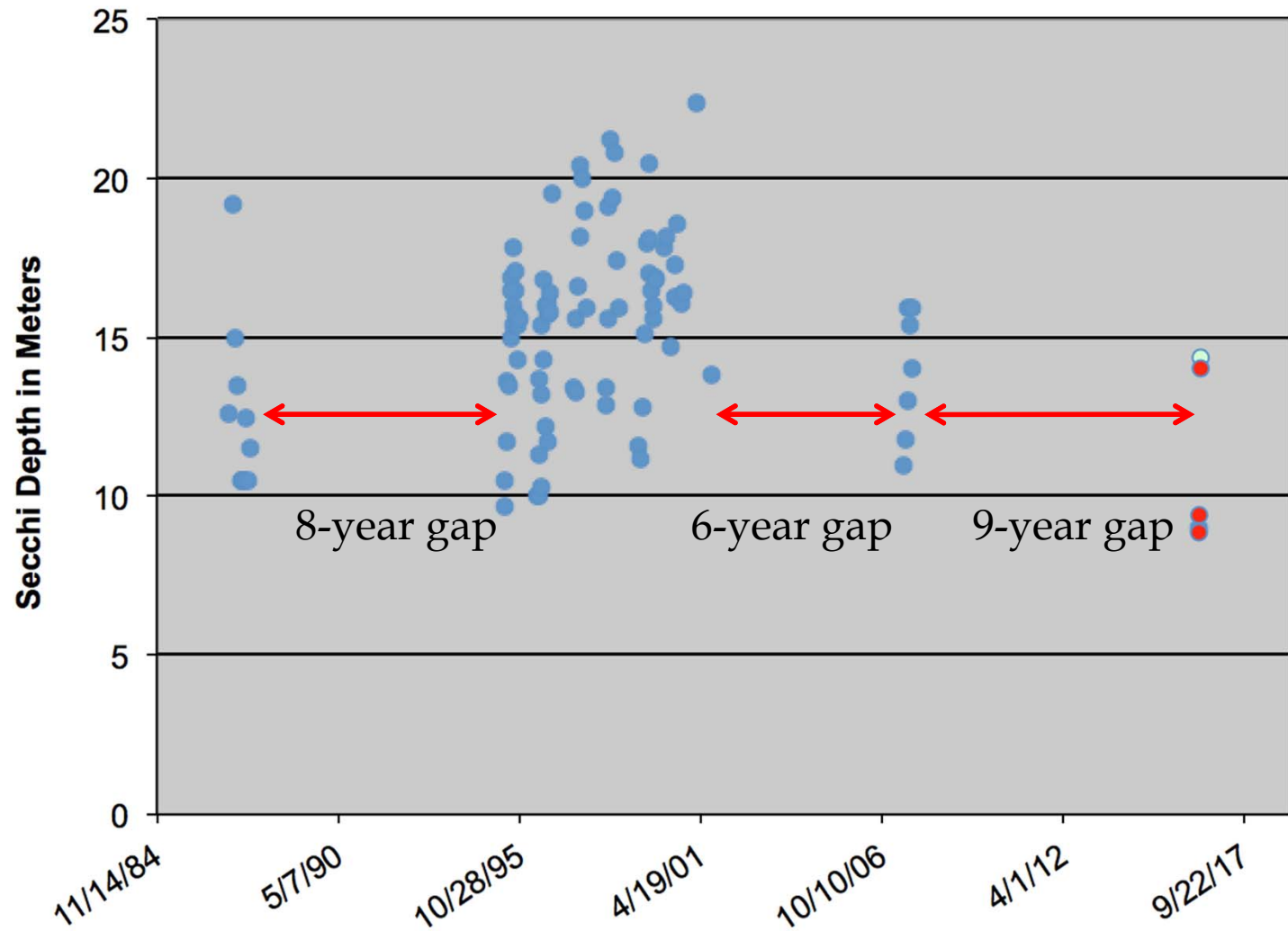
*We are ultimately responsible:  
Past practices have impacted lake  
sediments, and local streams*

Contaminants – Proposed 303(d) List for  
2014:



*We need to know  
what controls lake  
water clarity:*  
Frequent monitoring  
needed!!!

**SECCHI DISK MEASUREMENTS FOR LAKE CHELAN**  
*Station 4, 1987, 1995-2001, 2007, 2016*



*We need to know what controls lake water clarity: How far are we from a harmful algal bloom?*

Ultraoligotrophic  
Oligotrophic  
Mesotrophic  
Eutrophic  
Hypereutrophic



*Increasing  
C, N, P*



THE  
TRUST  
FOR  
PUBLIC  
LAND

# Map Exercise

---

- Where do you live?
- Where do you work?
- Where do you spend time outdoors?
  
- What do you want to protect?
- What do you want to connect?

# Goal and Criteria Workshop

---



- What are the important elements/criteria that will help define each goal?
  - What data sources are associated with each element/criteria?
1. Pink = top priority
  2. Orange = 2<sup>nd</sup> priority
  3. Green = 3<sup>rd</sup> priority



# Guiding Principles

---



- Beliefs and philosophy
- Guide you toward mission and vision
- Why and how we create the Community Open Space Plan
- Cohesive set of beliefs – around which there is consensus
- Keep it simple

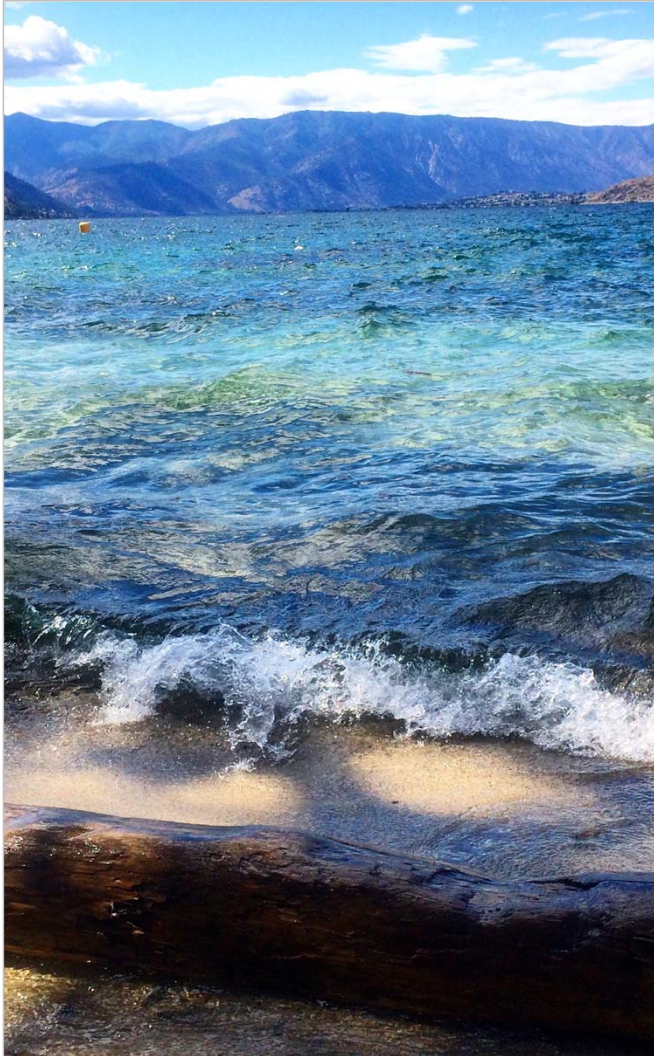
# Guiding Principles Example (Sandpoint)

---

- **Local Values.** Efforts to enhance conservation in our communities must be based on our local values.
- **Agriculture and Timber.** Local residents value our agricultural and forestry heritage. We encourage conservation efforts aimed at protecting agricultural and timber industries.
- **Multiple Benefits, Multiple Uses.** Conserved lands may serve multiple purposes. For example, protected agricultural and timber harvesting areas can provide economic benefits, open space, and habitat.
- **Economic Opportunity.** Surrounding beauty, recreational opportunities and open spaces all play a vital role in making the Greater Sandpoint area a desirable place to live and work—attracting and retaining job creators far beyond the tourist or extraction economy.
- **Conservation is Voluntary.** Greenprint partners only support voluntary, incentive-based conservation efforts.
- **We Respect Private Property Rights.**

# Vision Statement

---



- Aspirational statement about what we want to see at the end of this process (when priority areas are protected and connected)
- A catalyst that communicates purpose and values

Oxfam: A just world without poverty

Habitat for Humanity: A world where everyone has a decent place to live.

The Nature Conservancy: Our vision is to leave a sustainable world for future generations.



# Principles and Vision Exercise

---

- Choose to focus on either guiding principles OR developing a vision statement
- Fill out worksheet
- Discuss in pairs
- Put a star by two elements you think are most important
- You can fill out the other worksheet after the meeting if you'd like

# Next Steps

---



1. Designate technical advisory team (TAT)
2. Finish developing vision statement and guiding principles (need volunteers)
3. Finish interviews (TPL)
4. Begin collecting data for maps (GIS team with TAT help)
5. Develop draft goal maps (TPL)
6. Next meeting: January 2017

# Thank you!

---



**Amy Wilson Morris**  
Conservation Vision Program Manager  
The Trust for Public Land  
[Amy.Morris@tpl.org](mailto:Amy.Morris@tpl.org)

**Mitchel Hannon**  
GIS Project Manager  
The Trust for Public Land  
[Mitchel.Hannon@tpl.org](mailto:Mitchel.Hannon@tpl.org)

THE  
TRUST  
FOR  
PUBLIC  
LAND



## Meeting Summary

### Lake Chelan Community Open Space Vision Community Meeting #2

Thursday, January 26, 5:30 to 7:30 PM  
City of Chelan Council Chambers  
135 E Johnson Ave, Chelan, WA 98816

## Participants

Arthur Zul  
Barry DePaoli, Lake Chelan School District  
Bruce Hurst  
Butch Wiese  
Clint Campbell  
Craig Gildroy, City of Chelan  
Curt Soper, Chelan-Douglas Land Trust  
Dennis Rahm  
Doug England, Chelan County  
France Belfast  
Garth Donald  
Gary Sterner  
Gerry Ustanik  
Guy Evans, Lake Chelan Trails Alliance  
Hanne Beener, Chelan-Douglas Land Trust  
Jane Vaccaro  
Jason Doten  
Jillian Foster, Go Lake Chelan  
Jim Fankheuser  
Joanie Bankson  
John Page Jr  
John R. Olson  
Julianne Fleischman  
Karen Sargeant, City of Chelan  
Ken Dull, Roll and Flow Trail Design  
Kim Ustarik  
Larry Hibbard  
Leslie Myers  
Linda Fankheuser  
Luke Evans

Lynette Grandy  
Marilyn Clements  
Mickey Fleming, Chelan-Douglas Land Trust  
Mike Jackson, City of Chelan  
Mike Kaputa, Chelan County Natural Resources  
Mike Williams, Department of Natural Resources  
Morgan Pieton  
Paul Willard, US Forest Service  
Peri Gallucci, City of Chelan  
Phil Long, LCRF  
Ray Heit, Chelan PUD  
Rob Campbell, Manson Parks  
Robert Fifer  
Robin Pittman, Manson Parks  
Rod Anderson, Lake Chelan Reclamation District  
Ron Fox, Washington Dept Fish & Wildlife  
Servando Pobledo, Lookout  
Stephen Jiran  
Steve Boundingdun  
Steve Clark  
Steve Kline  
Tammy Lee Hauge, Chelan Basin Conservancy  
Tim Bankson  
Tim Hollingsworth  
Zach Johnson, Mirror  
Adrienne Truex, All Points GIS  
Amy McNamara, The Trust for Public Land  
Amy Morris, The Trust for Public Land  
Ann Welz, The Trust for Public Land

## Meeting Goals

- Review draft vision statement and guiding principles
- Review recent outreach efforts
- Discuss draft goal maps
- Introduce stakeholders to field verification process for trails
- Discuss key obstacles and opportunities increasing recreational access as part of the Open Space Vision

## Agenda

### 1. Welcome and Introductions

The room was full and the meeting was called to order at 5:40. Chelan Mayor Mike Cooney welcomed participants and congratulated the group for staying involved. He mentioned having met with the city manager a year ago to think about how they wanted the community to look for the next generation. Amy Morris from The Trust for Public Land led round robin introductions and asked participants to share their favorite place to spend time outdoors. Favorite places ranged from the Butte to the Lake to attendees' backyards. Participants mentioned enjoying hiking, biking, fishing, paddle boarding, and many other outdoor activities.

### 2. Overview of Meeting Goals and Open Space Vision Process

Amy reviewed the meeting agenda and goals and provided an overview of the Open Space Vision process. She noted that the ultimate goal of this process is to help the community make the best possible decisions about conservation and recreation priorities. The steps in the Open Space Vision process are:

1. Gather community input (interviews, surveys, speak outs, community meetings)
2. Analyze community input
3. Collect data and translate into GIS models
4. Weight criteria and goals based on technical team and community input
5. Create maps that reflect community priorities
6. Develop an implementation plan
7. Prepare a report that includes maps, community priorities, and action steps

The four goals being mapped based on community input are: **(1) Protect water quality; (2) Promote community health through increasing access to trails, parks, and the lake; (3) Protect wildlife habitat; and (4) Preserve agricultural land.**

Early community input did not adequately represent younger community members or Hispanic community members, so there has been ongoing outreach to these groups. There have been 118 responses to the community survey through outreach to local high schools. Spanish-language materials and survey are being distributed now. Amy briefly reviewed the results from the youth-focused survey. Responses indicate major concern about the lake and about fire. Word cloud of response to question "What do you love most about the Lake Chelan area?" is shown below. Other survey results are included in the attached meeting slides.





## 4. Overview of Goal Maps

Adrienne Truex from All Points GIS reviewed the draft maps for each of the four Open Space Vision goals: (1) protect water quality; (2) promote community health through increasing access to trails, parks, and the lake; (3) protect wildlife habitat/natural lands; and (4) preserve working lands. She briefly showed the relationship between the criteria and the goals. Adrienne noted that the maps are currently in draft stage (not yet reviewed by technical team) and criteria are equally weighted. The technical team will work on the final weighting for the criteria within each goal. Community meeting participants will help direct the weighting of each goal within a final overall map. See attached meeting slides for more detail. After the meeting, participants had an opportunity to review the maps and note any concerns or any suggestions for additional criteria. Feedback on goal maps included a question about why Manson looked so red on the water quality map and a question about how to address the impacts of runoff on water quality. Participants also identified some missing features on the wildlife goal map.

## 5. Introduction to Field Verification

Guy Evans from the Lake Chelan Trails Alliance (LCTA) discussed LCTA's interest in the Open Space Vision. LCTA is motivated by the opportunity at hand to address lack of access to the foothills and to the lake. Access was not prioritized by earlier residents and leaders who were just trying to live and build their businesses in a leaner era. The LCTA has come up with a list of a potential "top 20" new trails in the area. Guy invited people to add the list by drawing on the map. LCTA would like to see the Lake Chelan area become well-known for its "5 days, 5 hikes, 5 views"—opportunities for five iconic hikes in five days (Chelan Butte and Little Butte, Bear Mountain, Deer Mountain, 4<sup>th</sup> of July Mountain). Other trail ideas include a Lake Loop Chelan to Manson and trails that showcase local history (like Guy's grandfather's brick home).

After Guy described LCTA's vision for local trails, Amy discussed the field verification process that will be used to gather data for prioritizing trails. The goals of field verification are to determine which segments are priorities; identify better alternative routes; identify positive and negative hot spots; rate segments; and build excitement about potential new trails. Volunteers are trained to give trails scores based on viability, user experience, community health benefits, and equity of access. The following community members volunteered to help with field verification. Amy and Guy will contact them with more details in March.

Steve Clark  
Tim Hollingsworth  
Ken Dull  
Jason Doten

Bruce Hurst  
Garth Donald  
Servando Pobledo

Jim Fankheuser  
Linda Fankheuser  
Leslie and Gary Myers

## 6. Trail, Water, Park Access Workshops

Attendees were divided into four small groups by counting off by fours. Each group had a copy of the study area map. Facilitators Amy Morris, Amy McNamara, Hanne Beener, and Guy Evans each led a 15 minute discussion of the major opportunities and constraints for increasing access to trails, parks, and the lake. At the end of the discussions, participants used dot stickers to vote for their two opportunities and two constraints that they believe are most critical. The top opportunities identified included extending the Reach One trail, utilizing public rights-of-way for lake access, and acquiring land and trail easements. The top obstacles identified were private property limiting access to the Butte, private

property owners' objections to increased lake access, and need for maintenance for areas with informal public access. The full results of these workshops are shown in Tables 1 and 2 at the end of this summary.

## 7. Closing

At the end of the meeting, Amy and Mayor Cooney thanked participants for attending and providing input.

## Next Steps

- Finish Spanish language and youth outreach
- Work with Technical Team to complete priority modeling and criteria weights
- Field verification (when weather allows)
- Present final goal maps and work on weighting combined map (next community meeting: April or May)

## Attachments

- Access workshop full results
- Mission, vision, and revised guiding principles
- Meeting slides



## Access Workshop Full Results

**Table 1. Opportunities for Access to Lake, Trails, and Parks**

Opportunities	Votes	Notes
Reach One (complete loop/extend trail)	10	Need to work with Chelan PUD
Utilize public ROWs to the lake	7	City/county streets that dead-end or touch the lake
Acquire land and trail easements	6	
Butte mountain bike trails and trails to old mining sites	4	Need to protect/formalize access
Pedestrian access to Chelan Falls/Gorge Bridge	4	
Three Fingers public access/park	4	Citizen proposal, issue will go to WA supreme court, how involved with City of Chelan get?
Vineyard and orchard trail	4	Irrigation ROWs could be good trails
Full utilization of Manson Bay Park Waterfront	3	
Lakeshore Loop	3	Starting with Lakeside --> Chelan --> Manson
Revive Manson Scenic Loop	3	Existing and signed, but underused/unknown
Chelan Gorge Trails (old roadways)	2	
Develop local funding source to match state and federal funds	2	
Improve pedestrian and bike safety for Chelan-Manson highway corridor	2	
Lakeside Park on the narrows (northside)	2	
Non-motorized Lake Loop (interpretive)	2	Need place along lake to rest/dock kayak
Old CCC box canyon trail	2	
Stormy Mountain	2	Existing trails, but not maintained
Wayfinding signage	2	
25 mile creek USFS access	1	Open, but not open
Bear Mountain access	1	
Brick House Canyon	1	
Pedestrian-friendly lakeshore walkway	1	
Riverwalk Park swim access points	1	PUD obstacle?
Upper and Lower Joe Circle Loop	1	Existing paved city roads
Utilize Reclamation District ROW	1	Wrap lake to downtown Manson (need to educate board; identify hot spots and mitigation)
25 mile state park	0	Use 300-400 feet of existing state owned waterfront
Area to watch white water rafting	0	
Horse trail near rodeo	0	
Off-leash dog park	0	
20 acre county property (mouth of Poisen Creek)	0	Conservation District working on habitat zone

**Table 2. Obstacles for Access to Lake, Trails, and Parks**

Obstacles	Votes	Notes
Private property limits access to the Butte	14	Need owners willing to sell or donate access, liability concerns
Private property owners' objections to increased lake access	10	Unknowns and liability
Maintenance for areas with informal public access	6	Existing access is small, limiting for parking and sanitation
Funding	5	
Trailheads and parking for existing lake access	5	Especially Lakeside area, need safety improvements

Jurisdictional coordination (local/state/federal)	3	Need multi-agency group to coordinate
Lake access	2	Need more boat launches, possible issues with county survey in Manson
Orchard overspray	2	
Access to Brickhouse Canyon	1	
Lakeside Loop has very narrow corridor	1	
Permitting	1	
Safety	0	
Topography	0	
Wayfinding signage	0	

# Lake Chelan Community Open Space Vision

## DRAFT Vision, Mission, and Guiding Principles

### Vision

To thrive in a valley defined by its spectacular scenery, small-town character, agrarian traditions, and world-class recreation, and to leave a community rich in opportunity for future generations.

### Mission

To steward our valley's open spaces in ways that improve access, protect environmental quality, and enhance the vitality of residents and visitors.

### Guiding Principles

1. The lake is the centerpiece of our valley's spectacular natural beauty. We must protect the lake and its water.
2. The Open Space Vision ~~must reflect local values. It~~ should be based primarily on the priorities of local residents, including seasonal residents, but should also incorporate the perspectives of visitors who love the valley.
3. The Open Space Vision should be inclusive, and ~~it~~ should encompass the varied perspectives ~~from of~~ the entire community, ~~including young people and Hispanic residents.~~
4. We value our agricultural heritage and our small town character. We encourage conservation efforts that protect family farms ~~farms and vineyards~~ and preserve our small town culture.
5. We need believe it is important to increase opportunities for public access to the lakeshore and to trails in our foothills, ~~particularly Chelan Butte~~. Increasing opportunities for recreation promotes community health.
6. We strongly respect private property rights, ~~We~~ only support voluntary conservation involving willing landowners. ~~We strongly respect private property rights.~~
7. Protecting our extraordinary scenery and natural environment and expanding our recreational opportunities will increase local quality of life. It will also ~~and~~ help ensure that our economy is vibrant and rich in opportunities for current residents and future generations.

# Lake Chelan Community Open Space Vision

January 2017



# Conveners

---

- City of Chelan
- Lake Chelan Trails Alliance
- Chelan-Douglas Land Trust
- The Trust for Public Land



# Meeting Goals

---



- **REVIEW** open space vision process, youth survey results, draft goal maps, field verification approach
- **DISCUSS** vision, mission, guiding principles and opportunities and obstacles for increasing access

# Agenda

---



- Welcome and introductions
- Overview of meeting goals and open space vision process
- Review of vision, mission, and guiding principles
- Overview of draft goal maps
- Introduction to field verification
- Trail, water, and park access workshops
- Next steps and closing



# Building a Community Open Space Vision



# Why Protect Open Space?

---

Because protected open space can:

- Filter water, clean air, and control flooding
- Protect natural lands and preserve agricultural traditions
- Connect communities and foster stronger community identity
- Support recreation that attracts residents, businesses, and tourists who contribute to the local economy

# Community Open Space Vision

## **Will:**

- Combine community input with state-of-the-art mapping and modeling and the best available data
- Provide tools to guide planning
- Identify opportunities to meet multiple goals
- Prioritize areas for voluntary open space protection
- Build on local efforts and previous plans

## **Will NOT:**

- Map land use prohibitions
- Take feedback from only one perspective or user group
- Focus only on wildlife
- Involve condemning or taking land/private property

# Open Space Vision Steps

---

1. Gather community input (interviews, surveys, speak outs, community meetings)
2. Analyze community input
3. Collect data and translate into GIS models
4. Weight criteria and goals based on technical team and community input
5. Create maps that reflect community priorities
6. Develop an implementation plan
7. Prepare a report that includes maps, community priorities, and action steps

# Community Open Space Vision Goals

---

1. Protect water quality
  2. Promote community health through increasing access to trails, parks, and the lake
  3. Protect wildlife habitat
  4. Preserve agricultural land
- These goals are based on speak out and survey results
  - Ultimate goal to help community make the best possible decisions about what to **protect** and **connect**

# Youth-focused Survey Results

---

- Reached out to Chelan and Manson schools (will do map activity too)
- 118 responses (some teachers and staff)
- 55% white/non-Hispanic
- Conducted youth-focused survey because earlier community survey had a lot of participants (527), but 93% from white, non-Hispanic and skewed older
- Continuing to work on outreach to Spanish speakers



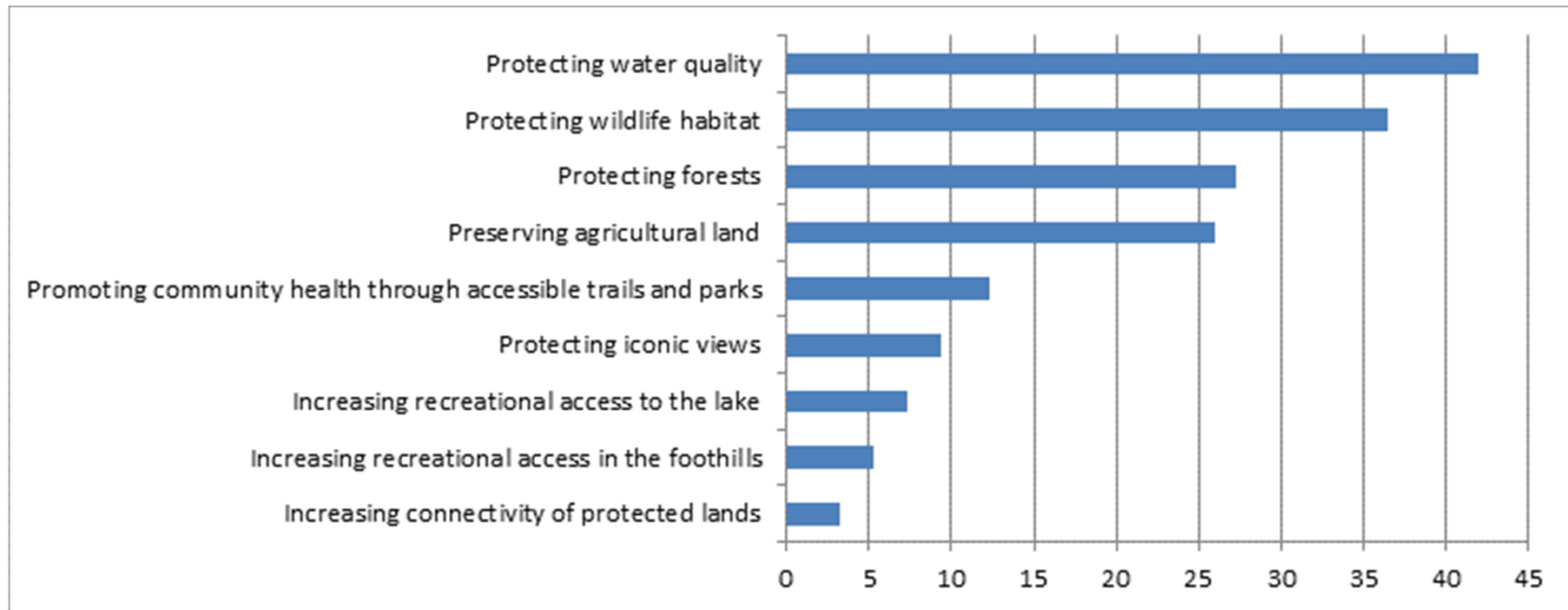






# Youth Outreach: Priorities for Lake Chelan area

---



Answered: 94 Skipped: 23



# Vision, Mission, Guiding Principles

# Draft Vision Statement and Mission

---

## **Vision**

To thrive in a valley defined by its spectacular scenery, small-town character, agrarian traditions, and world-class recreation and to leave a community rich in opportunity for future generations.

## **Mission**

To steward our valley's open spaces in ways that improve access, protect environmental quality, and enhance the vitality of residents and visitors.

# Draft Guiding Principles

---

1. The lake is the centerpiece of our valley's spectacular natural beauty. We must protect the lake and its water.
2. The Open Space Vision must reflect local values. It should be based primarily on the priorities of local residents, including seasonal residents, but should also incorporate the perspectives of visitors who love the valley.
3. The Open Space Vision should be inclusive. It should encompass perspectives from the entire community, including young people and Hispanic residents.
4. We value our agricultural heritage and our small town character. We encourage conservation efforts that protect family farms and vineyards and preserve our small town culture.
5. We believe it is important to increase opportunities for public access to the lakeshore and to trails in our foothills, particularly Chelan Butte. Increasing opportunities for recreation promotes community health.
6. We only support voluntary conservation involving willing landowners. We strongly respect private property rights.
7. Protecting our extraordinary scenery and natural environment and expanding our recreational opportunities will increase local quality of life and help ensure that our economy is vibrant and rich in opportunities for current residents and future generations.

# Reviewing Vision, Mission, Principles

---

- Spend 5 minutes discussing draft vision, mission, and guiding principles with a partner
- Write in any changes and comments
- Hand in your suggestions

# Goal Maps

# Example Resource Goal – Protect Water Quality in Rivers and Streams

---

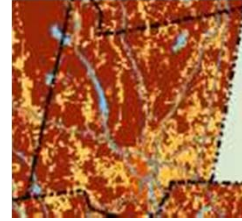
1. Protect natural lands along rivers, streams and drains
2. Protect permeable soils
3. Protect lands in areas where there is low depth to water table
4. Protect Lands in aquifer recharge zones

Existing data used to create a priority scale from 0 – 5, with 5 representing Highest priority.

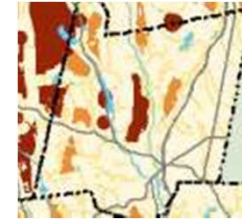


# Example Resource Goal – Protect Water Quality in Rivers and Streams

Protect natural lands along rivers, streams and drains



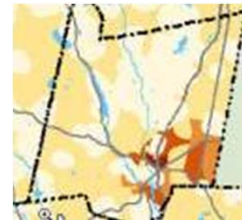
Protect permeable soils



Protect lands in areas where there is low depth to water table



Protect Lands in aquifer recharge Zones



30%

50%

10%

10%

Composite





# DRAFT Maps

---

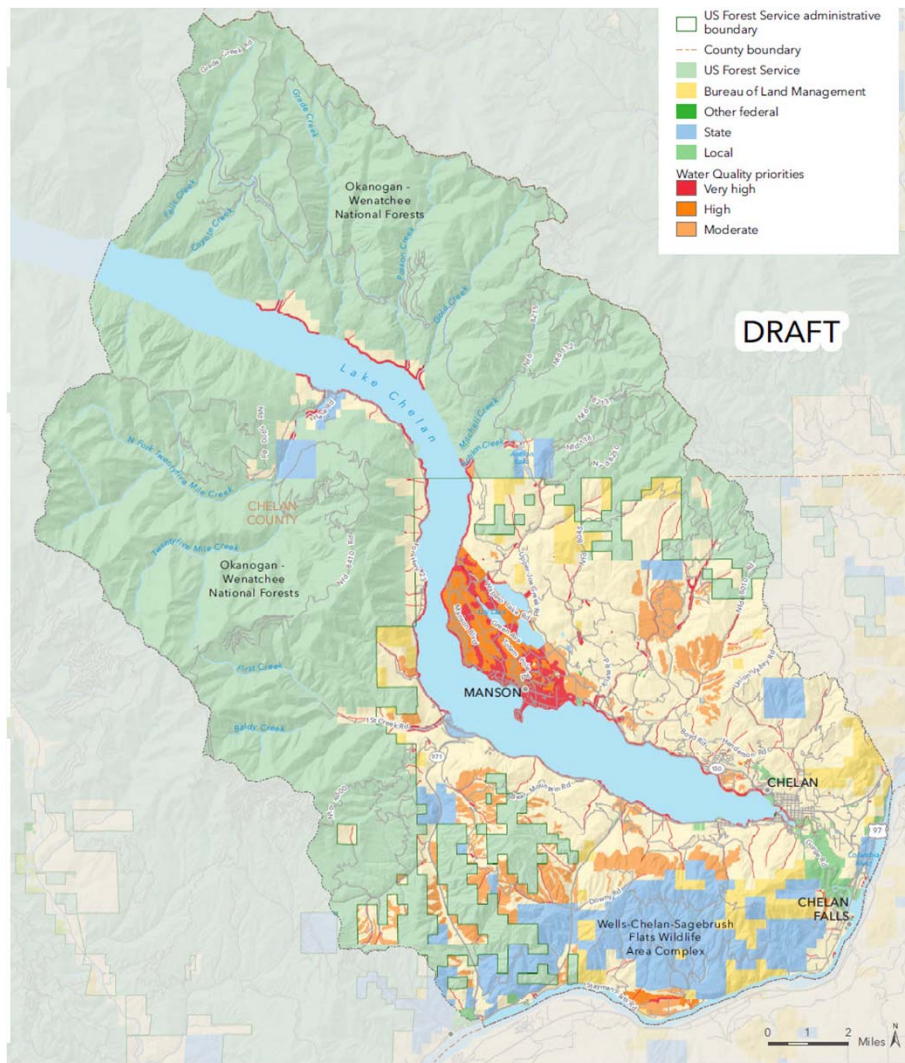
1. Not all criteria results have been created
2. Looking at criteria for which **land conservation** can provide a positive impact
3. Draft combined results on each map are equally weighted right now
4. Technical team will work on final criteria weighting

# Resource Goal – Water Quality

---

- Criteria from Technical Team, the County, and other local water quality experts
  - Review of the Dept of Ecology data on DDT and PCB impacts in the Lake Chelan watershed
1. Criteria 1: Protect riparian areas
  2. Criteria 2: Minimize soil erosion into surface water
  3. Criteria 3: Minimize DDT Transport into surface water and through soil into groundwater
  4. Criteria 4: Identify locations for constructed wetlands

# Water Quality

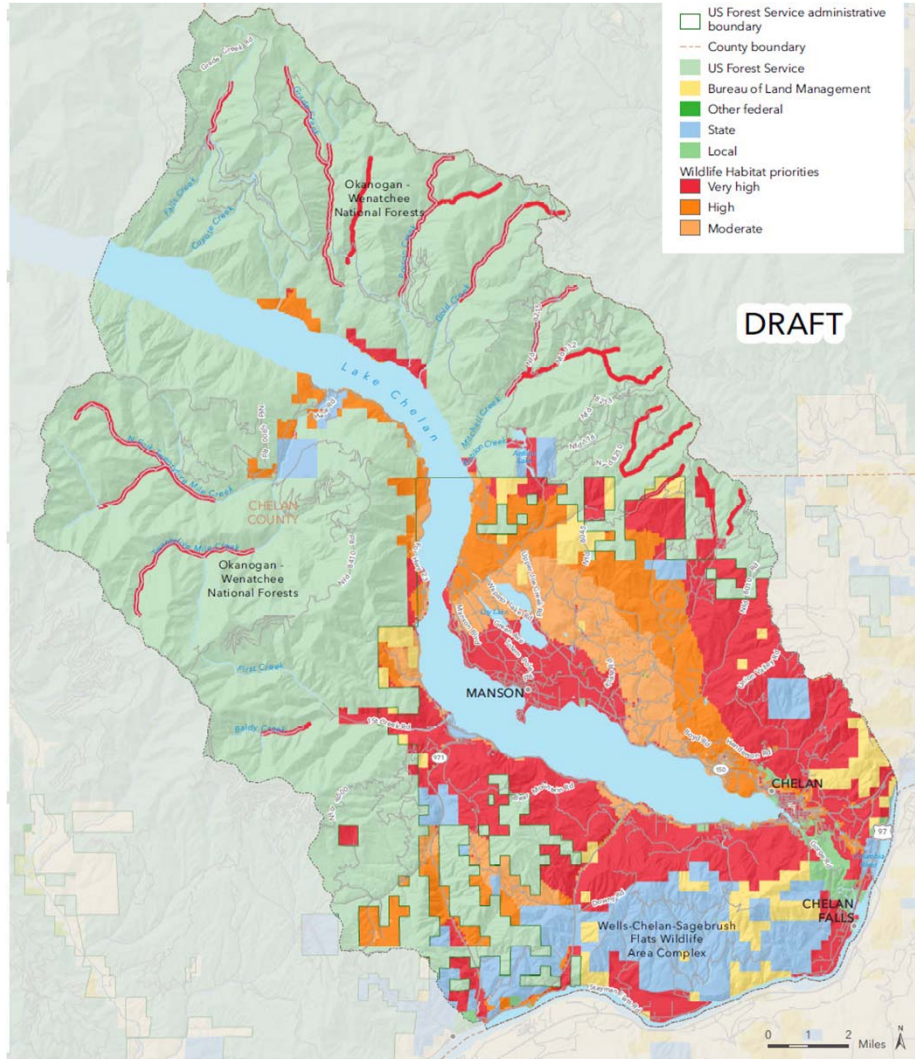


# Resource Goal – Wildlife Habitat

---

- Criteria from community meeting and Technical Team
  - Working to obtain WA DFW Priority Habitat and Species data and Natural Heritage Program data on rare and native plant locations
  - Technical Team helping with best ways to represent diverse habitat areas, may involve data creation
1. Criteria 1: Protect highly diverse forests
  2. Criteria 2: Protect bald eagle, osprey and owls nest buffers
  3. Criteria 3: Protect native plants and animals
  4. Criteria 4: Protect ungulate habitat
  5. Criteria 5: Protect native trout

# Wildlife Habitat



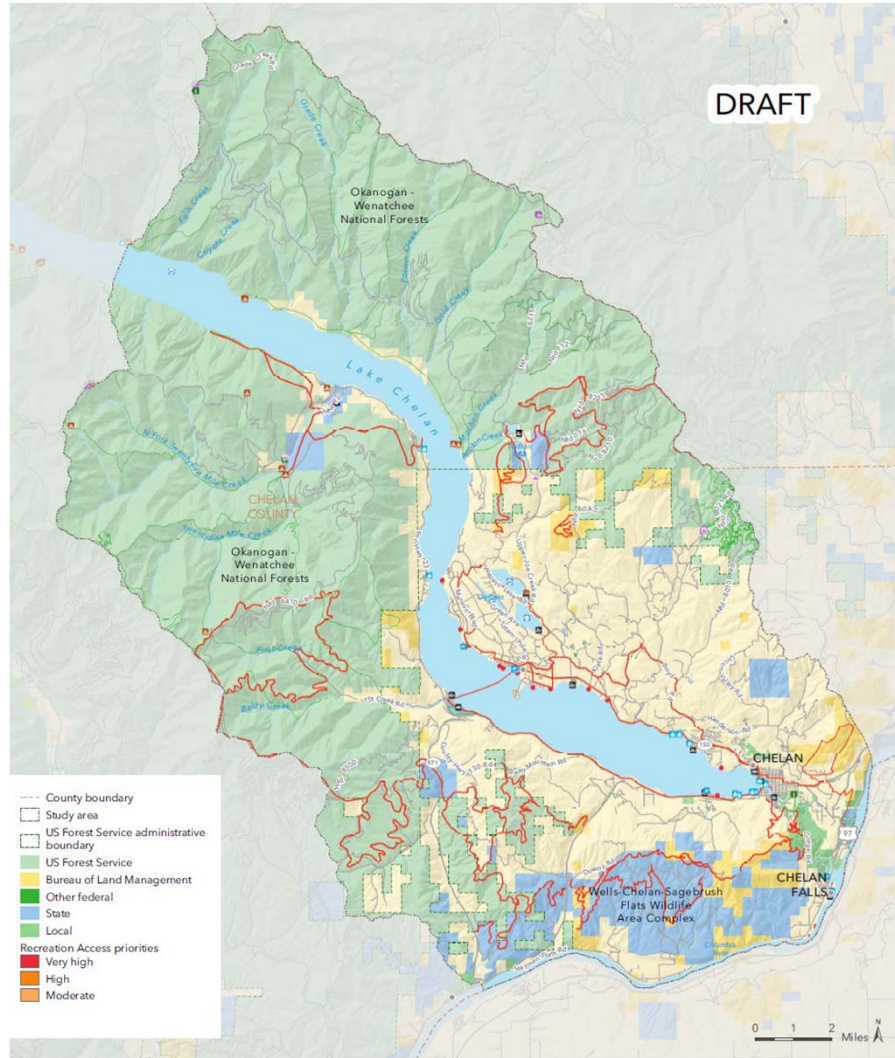
# Resource Goal – Recreation Access

---

- Working with Lake Chelan Trail Alliance to identify potential trail connection areas
  - Digitized lakeshore rights of way and are developing methodology for public access points
  - Assembling comprehensive conserved lands dataset to identify gaps
1. Criteria 1: Increase access to the lake
  2. Criteria 2: Create trail connections
  3. Criteria 3: Identify gaps in existing parks and open space



# Recreational Access



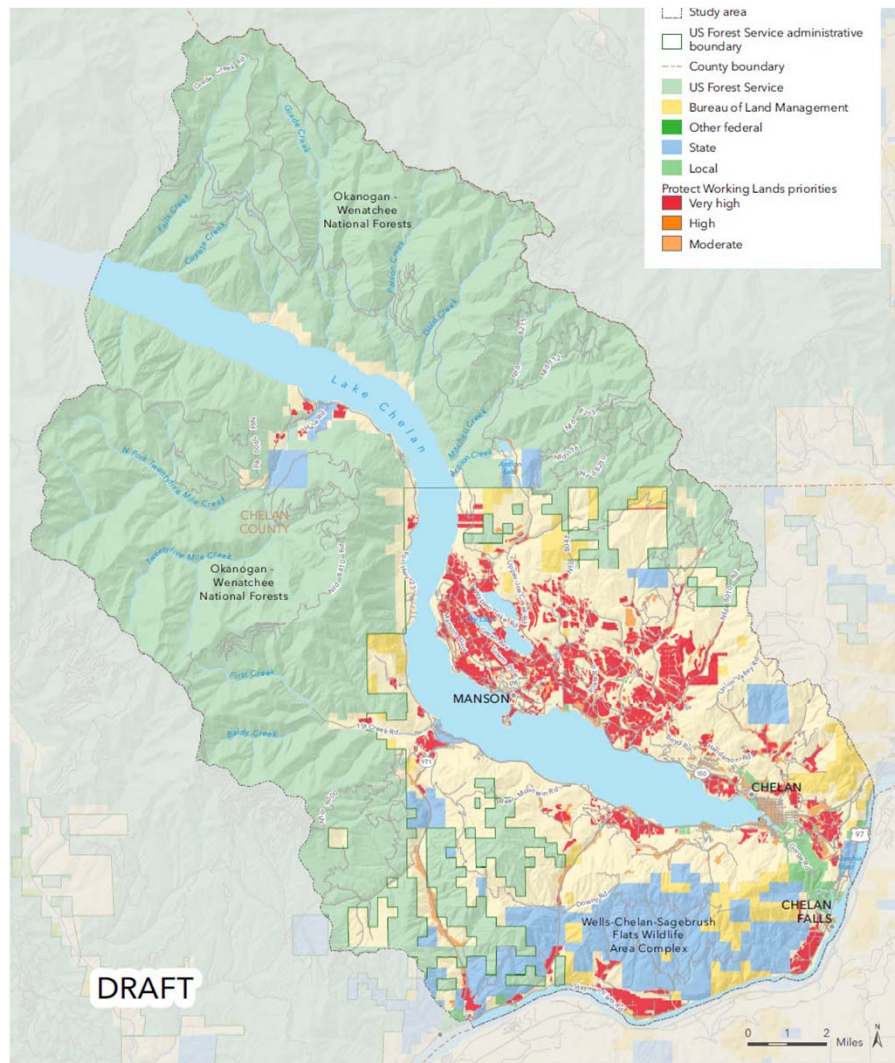
# Resource Goal – Protect Working Lands

---

- Collected data relevant to potential and existing agricultural activity
  - Working to develop a historical agriculture layer to help guide the modeling process
1. Criteria 1: Protect working lands with water rights
  2. Criteria 2: Protect high quality agricultural soils with low slope
  3. Criteria 3: Protect working agricultural lands
  4. Criteria 4: Protect views of agricultural landscapes



# Working Lands



# Today's Mapping Input

---

- At the end of the meeting, please review maps and note concerns or suggestions

# Thank you to Technical Team participants!

---

1. Phil Long – Lake Chelan Recreation Forum
2. Gary Sterner
3. Paul Willard - USFS
4. Coron Polley – City of Chelan
5. Ken Dull – Roll and Flow Trail Design
6. Tim Hollingsworth – Pinnacle Surveying
7. Richard Finger – Washington Department of Fish and Wildlife
8. Ron Fox – Washington Department of Fish and Wildlife
9. Von Pope – Chelan PUD
10. Karen Sargeant – City of Chelan
11. Dave Volson – Washington Department of Fish and Wildlife
12. Graham Simon – Washington Department of Fish and Wildlife
13. Paul Heffernan – Chelan County DNR

# Stretch Break!

---

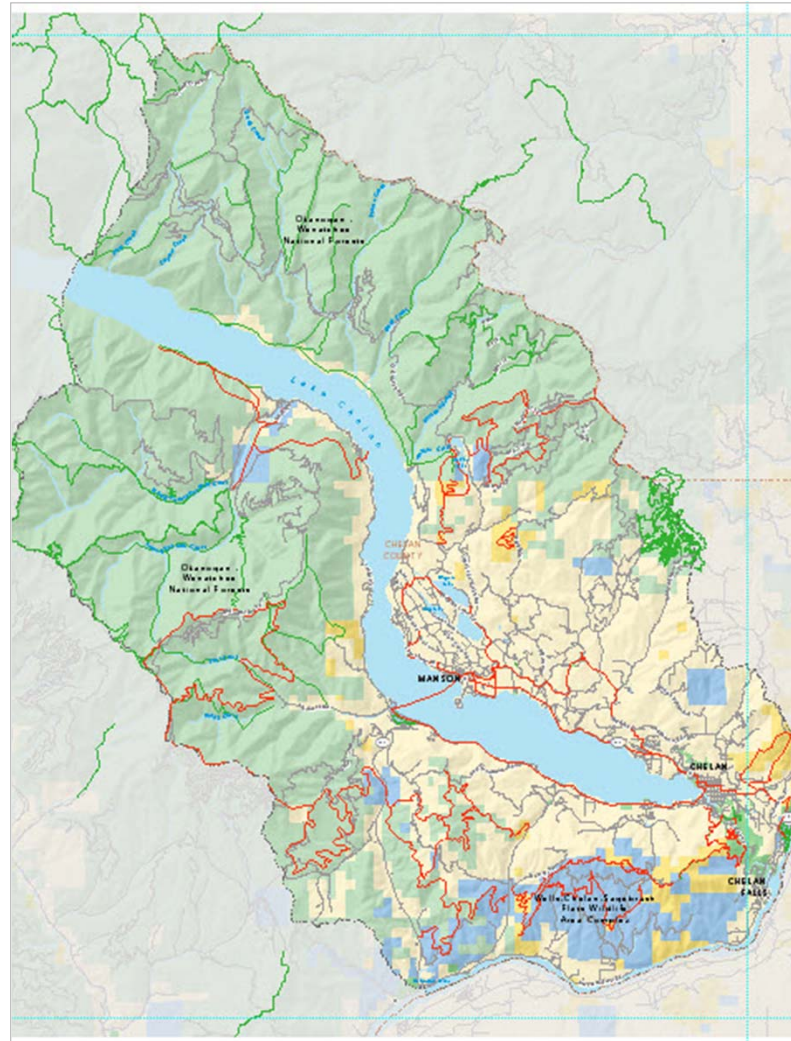


# Trails and Field Verification



# Lake Chelan Area Trails

---



# Field Verification Goals

---

- Determine which segments are priorities
- Identify better alternative routes (if possible)
- Identify positive and negative “hot spots”
- Rate segments
- Build excitement about potential new trails



# Hot Spots: Railroad Crossings, Driveway Cuts, Wetlands

---



# Hot Spots: Railroad Corridors and Utility Rights-of-Way

---





# Field Verification

---

- **Viability Score:** Existing path? Any major impediments?
- **User Experience Score:** Pleasant/iconic views? Noise? Anything notable about sound and feel?
- **Community Health Score:** Near existing public amenities such as schools and hospitals? Shade for people to rest?
- **Equity Score:** Who lives nearby (children, seniors, low income residents)? Would topography be accessible to a wide range of users? Access for community members without a car?

# Trail, Water, Park Access Workshops

# Opportunities and Obstacles for Access

---

- Are there specific trail opportunities that should be explored? (Please draw on maps.)
  - What opportunities are there for increasing use of existing parks and community recreation spaces? (For example, ideas for rec center and amphitheater for Don Morse.)
  - What would help increase access to the lake?
  - What are the major obstacles to increasing access?
- Use two dot stickers to vote for top two opportunities and two to vote for top two obstacles

# Next Steps



- Finish Spanish language and youth outreach
  - Work with Technical Team to complete priority modeling and criteria weights
  - Field verification (when weather allows)
  - Present final goal maps and work on weighting combined map (next community meeting: April)
- 
- Volunteer to field verify trail/s
  - Review maps after the meeting and note any concerns or suggestions

# Thank you!

---



**Amy Wilson Morris**  
Conservation Vision Program Manager  
The Trust for Public Land  
[Amy.Morris@tpl.org](mailto:Amy.Morris@tpl.org)

**Mitchel Hannon**  
GIS Project Manager  
The Trust for Public Land  
[Mitchel.Hannon@tpl.org](mailto:Mitchel.Hannon@tpl.org)







## Meeting Notes Summary

### Lake Chelan Community Open Space Vision Community Meeting #3

Thursday, May 11, 5:30 to 7:30 PM

City of Chelan Council Chambers

135 E Johnson Ave, Chelan, WA 98816

### Attendees

Alene Underwood, Chelan County PUD

Amy Morris, The Trust for Public Land

David Morgan, Chelan-Douglas Land Trust

Garry Ustanik, Mountain View Lodge

Garth Donald, Stormy Mountain Brewing

Gary Meyers

Gary Sterner, Chelan Basin Conservancy

Greg Donald

Guy Evans, Lake Chelan Trails Alliance

Jim Fankhauser

Jim Tuttle

John Olson, Friends of Lake Chelan

Kari Wier, US Forest Service

Ken Dull

Kim Ustanik, Mountain View Lodge

Leslie Meyers

Linda Fankhauser

Marilyn Clements, Lake Chelan Recreation Forum

Mickey Fleming, Chelan-Douglas Land Trust

Mitchel Hannon, The Trust for Public Land

Paul Willard, Lake Chelan Trails Alliance

Phil Long, Lake Chelan Research Institute

Rachael Goldie, Parks Board

Ron Fox, WA Dept of Fish and Wildlife

Roy Heil, Chelan County PUD

Ruth Ann Mikels

Scott McKella, Sunset Marina

Servando Robeldo, Councilor, City of Chelan

Steve Clark

Steve Easley

Steve Kline

Steve Milner

Von Pope, Chelan County PUD

Wai Tim Peterson, Chelan County PUD

### 1. Welcome and Introductions

Chelan Mayor Mike Cooney welcomed participants. The Mayor expressed excitement about the creation of the open space vision. He explained that in the past year Chelan has learned about our assets, including the people who contribute to making the community better. The Mayor congratulated The Trust for Public Land for helping the community to do this. Amy Morris from The Trust for Public Land then led round robin introductions (including name, organization, and favorite place to spend time outdoors).

### 2. Overview of Meeting Goals and Open Space Vision Process

Amy reviewed the meeting agenda and goals. The goals of the meeting were to: (1) approve a final vision statement, (2) select a final scenario for the Open Space Vision map, (3) discuss strategies for protecting water quality, (4) discuss opportunities for improving local parks and park access, and (5) begin planning for Open Space Vision implementation.

Amy provided a brief overview of the process for newcomers, and reviewed where we are in the project timeline. She explained that we are now at the tail end of gathering community input and translating it for use in GIS models. She also mentioned that the project will culminate with a story map showing and

explaining the community's priorities. The ultimate goal of this process is to help the community make the best possible decisions about conservation and recreation priorities specifically related to the four community goals: (1) protect water quality, (2) promote community health through recreational access, (3) protect working lands, and (4) protect wildlife habitat.

### 3. Report Outs from Field Verification

Guy Evans from the Lake Chelan Trails Alliance and Garth Donald from Stormy Mountain Brewing briefly reported to the participants about their participation in field verification process for proposed trails. Field verification was completed for eighteen potential trails. The segments were scored on health/equity; viability; user experience; current condition; and overall experience. Garth reported that he and his father went to Bear Mountain, and recorded great views, a potential road for a trail at a good grade. Garth explained that just a little work could produce lots of family-friendly trails—in addition to some spectacular more challenging trails. Guy said that field verification was a great experience, and a great opportunity for the trails alliance to research the jewels around us in the Chelan area.

### 4. Vote on Vision Statement

Amy then presented the vision statement and asked for an up or down vote. Mitchel Hannon from The Trust for Public Land provided a sample voting question so that participants were comfortable with the voting keypad. The sample voting question was about their favorite fruit, and the winner was apples. Mitchel then showed the proposed vision statement: *To thrive in a valley defined by its spectacular scenery, small town character, agrarian traditions, and world-class recreation, and leave a community rich in opportunities for future generations.* The vote tally was 96% in support of the proposed vision statement. One participant later noted that they wished water quality were specifically addressed in the vision.

### 5. Selecting Overall Open Space Vision Scenario

Mitchel reviewed the work over the last few months. He explained that community input helped develop the criteria for the four goals and areas and that the Technical Advisory Team (TAT) worked on getting the data and developing the weighting of the criteria. Mitchel showed the list of the twelve people who served on the Technical Advisory Committee and thanked them for their input and time. The four community goals being layered together in the overall scenario are: **(1) Protect water quality; (2) Promote community health through increasing access to trails, parks, and the lake; (3) Protect wildlife habitat; and (4) Preserve agricultural land.** See meeting slides for more details about criteria within these goals.

After reviewing updated goal maps, Mitchel explained that we need to create a map that helps set clear priorities. Clear priorities will be very helpful for seeking funding in the future and deciding how to best use limited resources. Mitchel presented alternative overall scenarios for the group to consider. One option is equal weighting of all four goals. He explained that the earlier community poll gave heavier weighting to water (40%), access (27%), agricultural land (16%), and wildlife (16%). Participants discussed the weighting of water in detail, and Mitchel clarified that the criteria included for water quality are related to how land protection can be used to protect water quality. This was followed by a discussion of the math behind “very high,” “high,” and “moderate” categories, which were shown in shades of purple on the maps. Mitchel explained that statistical breaks showed the divisions among these three categories.

The participants were then asked to vote on an overall map scenario. Using keypads for voting, the participants were asked to vote on equal weighting or community poll percentages. Of the 28 voting

participants, 79% voted for using the results of the community poll to determine weights, and 21% voted for the equal weighting.

## 6. Water Quality and Park Workshops

Amy showed a figure depicting the advantages of conserved space for water quality. She also showed the parks map, and explained that 45% of the residents living within the study area have access to green space within a 10 minute walk of their homes. Amy then divided attendees into four groups by counting by fours. Each group worked with facilitators to discuss: (1) How to protect water quality: What strategies should be used in addition to land protection? (2) How to improve and increase access to local parks: What are the major limitations of current parks? How can they be improved? Are more parks needed? Where?

Mitchel from The Trust for Public Land and Guy from Lake Chelan Trails Alliance facilitated the water quality discussions, and Amy from The Trust for Public Land and David Morgan from Chelan-Douglas Land Trust led the park groups. After the workshop discussions, participants were given four dot stickers to vote for their top two priorities for water quality and their top two priorities for parks. Workshop results are included at the end of this meeting summary.

## 7. Implementation Planning Exercise

Next, Amy introduced a brief writing exercise to kick off implementation planning. Amy explained that ideally these steps should be implementable by the core team or by other key stakeholders. The worksheet for the writing exercise asks: (1) What steps will be most important in ensuring that the Lake Chelan Open Space Vision is successfully implemented? She asked participants to specify in detail who/what/when/where/how. The results of this exercise will be used to develop a draft implementation plan that will be discussed and revised at the next community meeting.

## 8. Next Steps and Closing

Amy let the group know that she will summarize the material collected today and send out a meeting summary by email. The final community meeting will be July 13. Before then, The Trust for Public Land will integrate the field verification data, create the final overall map, develop the story map, finish additional outreach to the Hispanic community, and begin working on the final report.

## Workshop Results

Idea	Priority Votes
Educate the public about water quality, including schools (kids in the creek); PUD circulars or utilities; media; Ruby Theater promos (video by high school); panels on trails; boaters (safety cards; boat shops).	10
Control urban runoff and stormwater runoff (more drains, test, mitigate)	7
Additional monitoring (have schools participate)	5
Ensure sewer line on South short isn't leaking	5
Oil/water separators	5
More testing stations (e.g. Deer Point); establish a baseline	5
Make bilge socks mandatory; sewage dye tablets - give away at boat launches and pump stations	5
Test septic systems (old cabins); private drain fields	3
Woodin Ave bridge; more infiltration green area for retention; room is an issue	2
Trails need to consider water quality issues	1

<b>Table 1. Workshop Results: How to Protect Water Quality?</b>	
Idea	Priority Votes
Tax incentives; find additional funds	1
Rec District ag drains owned by Federal Bureau of Reclamation need to analyze existing data and get new data	1
Drain pope from Wapato Lake - increase infiltration?	1
Stink Creek constructed wetlands	1
HDCA/city dock outfall by Campbell's - dock redesign with better retention	1
Electric boats and jet skis	1
Facilities for parks and recreation - need enough restrooms	1
Buy orchards to build constructed wetlands	0
Private developers should be accountable to make good design / management choices	0
Pesticides from orchards + herbicides at schools/parks	0
Rotary volunteers for work: oil separators in catch basins; show pictures	0
Ag land conversion	0
Fund more lake studies	0

<b>Table 2. Workshop Results: How to Improve and Increase Access to Local Parks?</b>	
Idea	Priority Votes
Fingers should be used for public park (many options TBD)	10
Outreach to key legacy property owners who are near existing parks or near road-ends (e.g.. Forest Service Swim Park)	6
Neighborhood parks could be needed/useful in downtown areas (not only parks near lake)	5
Improve pedestrian and bike access to parks to alleviate parking, and alleviate the parking problem itself (especially Lakeside Park, Manson, Willow, USFS area, park shuttle from parking to park itself. LINK trolley idea didn't pan out)	8
On-water park opportunities (Three Fingers; by narrows on uplake side, big ROW)	4
Improve what we have (Don Morse - walkway on top of the break water in Marina, increase public access, bring sand back at Don Morse with removal of retaining wall)	4
Adequate public access (trails) needed to get to water parks	3
Mechanism to improve parks, create more parks, procure more land	3
Water trails (kayaking or other non-motorized USFS (ex: 25 M; State park to Box Canyon)	3
Consider greenway concept to connect pocket parks (ex: "Pollinator Pathways in Seattle")	3
Green Docks/PUD - look into this potential? More public info	1
Convert lakeside park to dog park	1
Create taxation structure; conservation futures program; to create income stream	1
Trails are one component of parks (ex: Manson Wetland Singleton Park)	1
Private landowners encroaching on public ROW especially near Manson	1
Recreation center (examples were pool, gym) for winter	0
ROW developed (Petersen's/ Park St) need dock /bathroom	0
Waterfront parks get overrun	0
Off-water park opportunities (Bear Mountain Copp, land trades with Forest Service)	0

<b>Table 2. Workshop Results: How to Improve and Increase Access to Local Parks?</b>	
<b>Idea</b>	<b>Priority Votes</b>
Create more splash parks	0
Manson; CCT casino area; pocket parks and ROW; behind city hall; South Chelan; older neighborhoods farther from parks; Chelan falls has under-utilized parks - advertise them	0
Income generating ideas for parks departments (ex: gazebo)	0
Public spaces on private property (ex: churches)	0
Consider timing/use rules so all user groups have opportunities (ex: motorized/non-motorized). Also, swimmers adversely affected by boating activity especially Willow Park	0
Lakeside Park into Chelan - all the way along highway	0

# Lake Chelan Community Open Space Vision

May 2017





# Conveners

---

- City of Chelan
- Lake Chelan Trails Alliance
- Chelan-Douglas Land Trust
- The Trust for Public Land



# Meeting Goals

---



- REPORT BACK from groundtruthing potential trails
- APPROVE final vision statement and overall map
- DISCUSS strategies for protecting water quality and improving local parks and park access
- PLAN for Open Space Vision implementation

# Agenda

---



- Welcome and introductions
- Overview of meeting goals and open space vision process
- Reports from field verification
- Vote on vision statement
- Select overall Open Space Vision scenario
- Water quality and park workshops
- Implementation planning exercise
- Next steps and closing

# Building a Community Open Space Vision

# Why Protect Open Space?

---

- Protect water quality, clean air, and control flooding
- Protect natural lands and preserve agricultural traditions
- Connect communities and foster stronger community identity
- Create opportunities for recreation and outdoor exercise that attract residents, businesses, and tourists who contribute to the local economy

# Community Open Space Vision

## **Does:**

- Combine community input with state-of-the-art mapping and modeling
- Provide tools to guide planning
- Identify opportunities to meet multiple goals
- Prioritize areas for voluntary open space protection
- Build on local efforts and previous plans

## **Does NOT:**

- Map land use prohibitions
- Take feedback from only one perspective or user group
- Focus only on wildlife
- Involve condemning or taking land/private property



# Open Space Vision Steps

---

1. **Gather community input** (interviews, surveys, speak outs, focus groups, community meetings)
2. **Analyze community input**
3. **Collect data** and translate into **GIS models**
4. **Weight criteria and goals** based on technical team and community input
5. **Create maps** that reflect community priorities
6. Develop an **implementation plan**
7. Create an **online story map**
8. **Prepare report** that includes maps, community priorities, and action steps

# Community Open Space Vision Goals

---

1. **Protect water quality**
  2. **Promote community health through increasing access to trails, parks, and the lake**
  3. **Protect wildlife habitat**
  4. **Preserve agricultural land**
- These goals are based on speak out and survey results
  - Ultimate goal to help community make the best possible decisions about what to **protect** and **connect**

# Draft Guiding Principles

---

1. The lake is the centerpiece of our valley's spectacular natural beauty. We must protect the lake and its water.
2. The Open Space Vision must reflect local values. It should be based primarily on the priorities of local residents, including seasonal residents, but should also incorporate the perspectives of visitors who love the valley.
3. The Open Space Vision should be inclusive. It should encompass perspectives from the entire community, including young people and Hispanic residents.
4. We value our agricultural heritage and our small town character. We encourage conservation efforts that protect family farms and vineyards and preserve our small town culture.
5. We believe it is important to increase opportunities for public access to the lakeshore and to trails in our foothills, particularly Chelan Butte. Increasing opportunities for recreation promotes community health.
6. We only support voluntary conservation involving willing landowners. We strongly respect private property rights.
7. Protecting our extraordinary scenery and natural environment and expanding our recreational opportunities will increase local quality of life and help ensure that our economy is vibrant and rich in opportunities for current residents and future generations.

# Mission Statement

---

To steward our valley's open spaces in ways that improve access, protect environmental quality, and enhance the vitality of residents and visitors.

# Trail Field Verification

# Field Verification Results (18 trails)

---



## Average scores

- Health/equity: 3.3
- Viability: 4.2
- User experience: 4.5
- Current condition: 3.2
- Overall: 4



# Vision Statement Vote

# Vision Statement

---

To thrive in a valley defined by its spectacular scenery, small-town character, agrarian traditions, and world-class recreation and to leave a community rich in opportunity for future generations.

# Stretch Break!

---



# Selecting an Overall Vision Map

# Mapping Steps Since Last Meeting

---

- Reviewed the draft final results for the criteria
  - Criteria identified based on community input
- Determined the weights for each criteria within each goal based on:
  - Relative importance of the criteria to the Resource Goal.
  - Quality and resolution of the data used to create the model results.

# Technical Team Participants

---

1. Phil Long – Lake Chelan Recreation Forum
2. Gary Sterner
3. Paul Willard - USFS
4. Coron Polley – City of Chelan
5. Ken Dull – Roll and Flow Trail Design
6. Tim Hollingsworth – Pinnacle Surveying
7. Richard Finger – Washington Department of Fish and Wildlife
8. Ron Fox – Washington Department of Fish and Wildlife
9. Von Pope – Chelan PUD
10. Dave Volson – Washington Department of Fish and Wildlife
11. Graham Simon – Washington Department of Fish and Wildlife
12. Paul Heffernan – Chelan County DNR

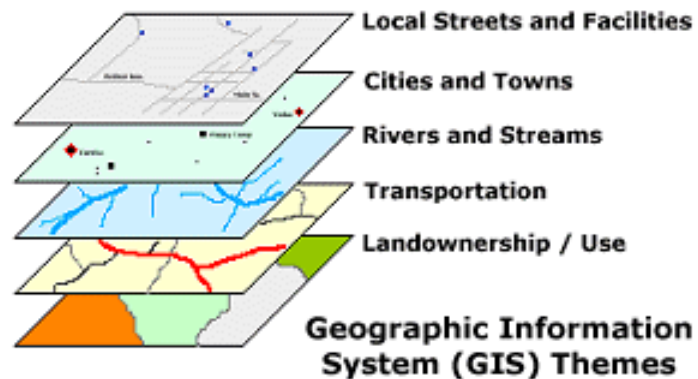


# Example Resource Goal – Protect Water Quality

---

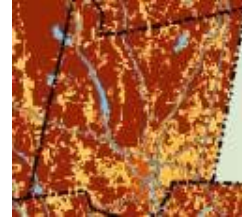
1. Protect riparian and wetland buffers
2. Minimize soil erosion into surface water
3. Identify locations for constructed wetlands

Existing data used to create a priority scale from 0 – 5, with 5 representing Highest priority.



# Example Resource Goal – Protect Water Quality in Rivers and Streams

Protect riparian and wetland buffers



30%

Minimize soil erosion into surface water



30%

Identify locations for constructed wetlands



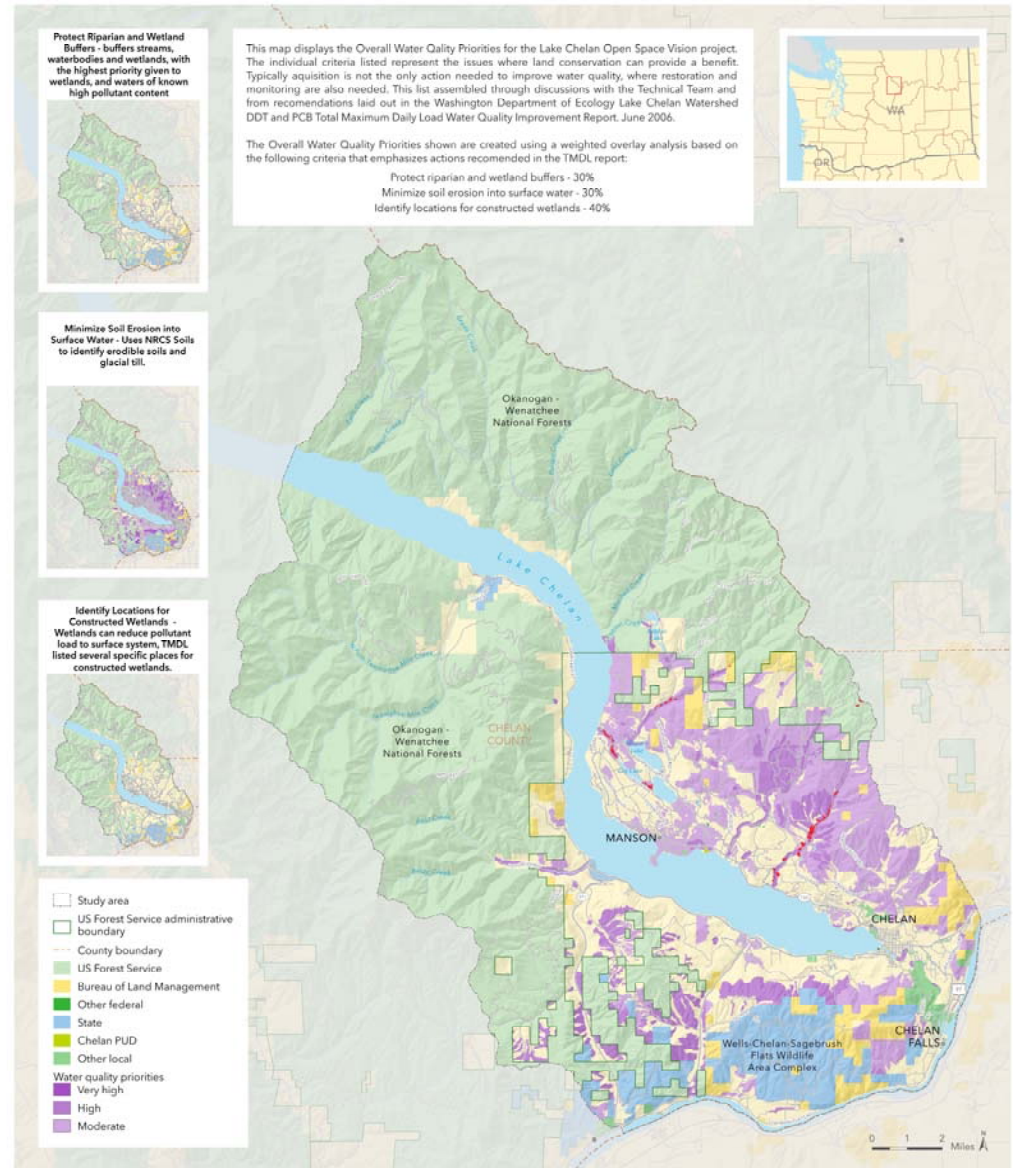
40%

Composite



# Resource Goal – Water Quality

1. Protect riparian and wetland buffers = 30%
2. Minimize soil erosion into surface water = 30%
3. Identify locations for constructed wetlands = 40%



## Water quality

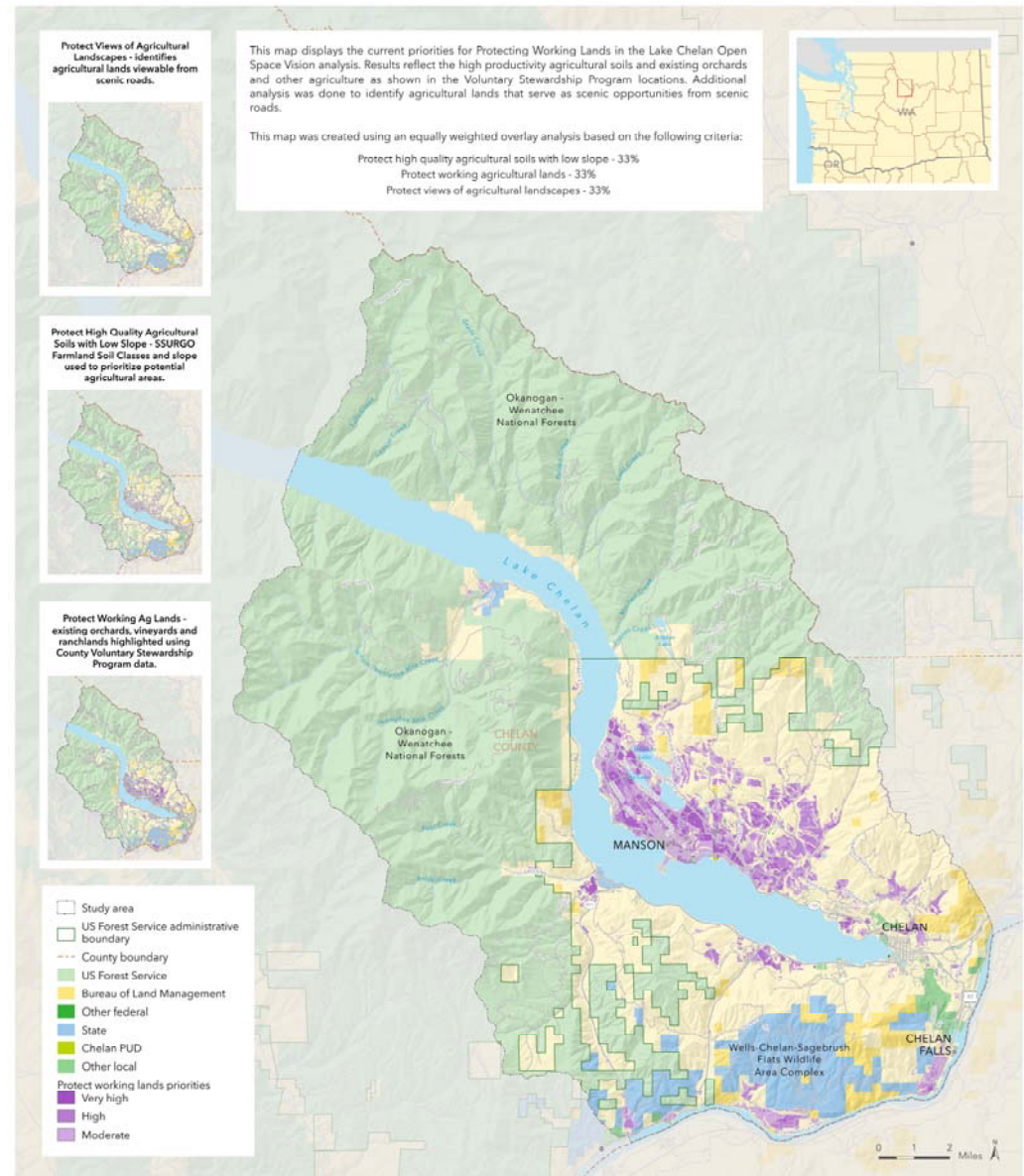
LAKE CHELAN COMMUNITY OPEN SPACE VISION

May 10, 2017. Copyright © The Trust for Public Land. The Trust for Public Land and The Trust for Public Land logo are federally registered marks of The Trust for Public Land. Information on this map is provided for purposes of discussion and visualization only. [www.tpl.org](http://www.tpl.org)



# Resource Goal – Protect Working Lands

1. Protect high quality agricultural soils with low slope = 33%
2. Protect working ag lands = 33%
3. Protect views of agricultural landscapes = 33%



## Protect working lands

LAKE CHELAN COMMUNITY OPEN SPACE VISION

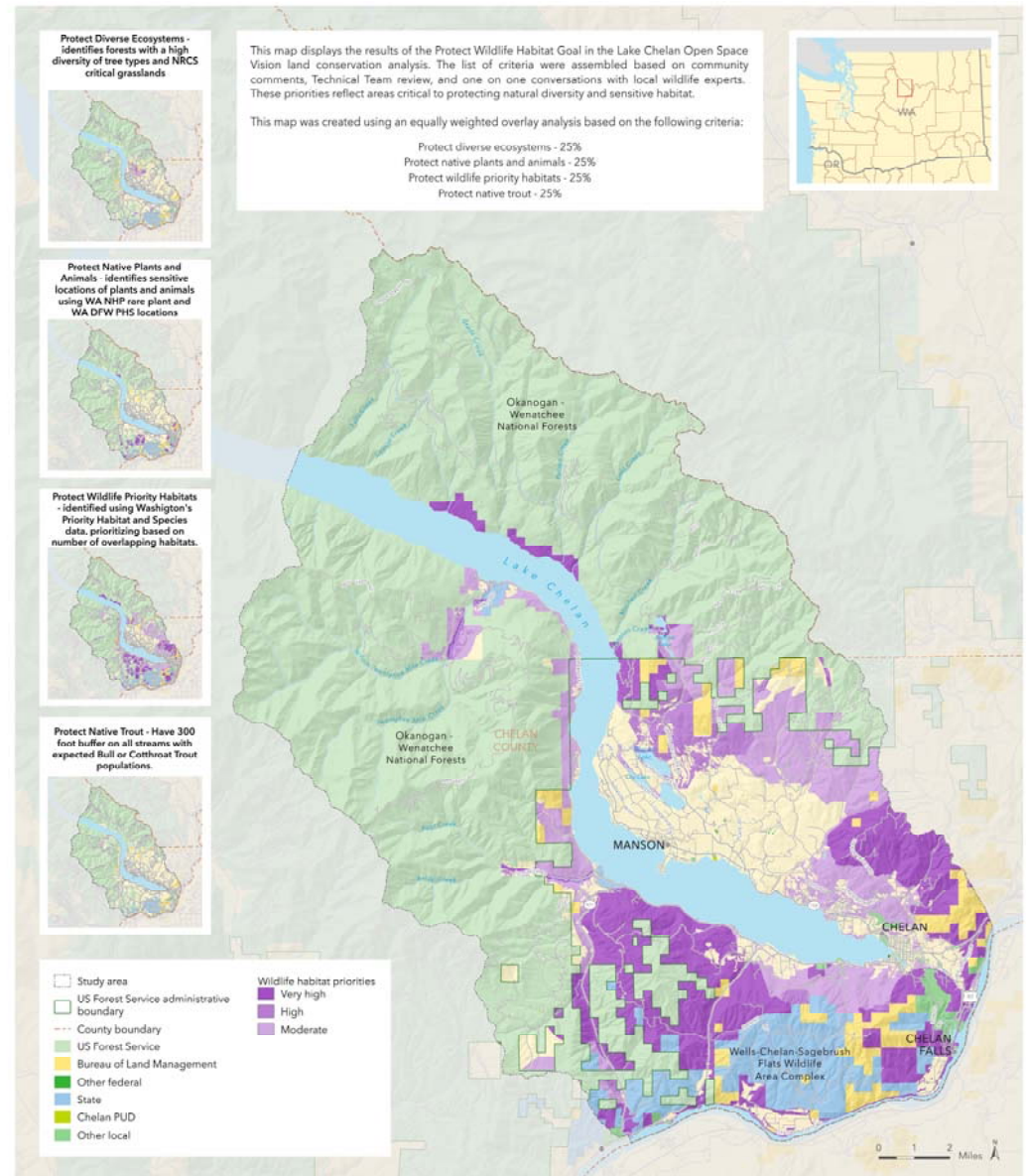
May 10, 2017. Copyright © The Trust for Public Land. The Trust for Public Land logo are federally registered marks of The Trust for Public Land. Information on this map is provided for purposes of discussion and visualization only. [www.tpl.org](http://www.tpl.org)





# Resource Goal – Wildlife Habitat

1. Protect natural diversity = 25%
2. Protect native Plants and animals = 25%
3. Preserve wetlands = 25%
4. Protect native trout = 25%



## Wildlife habitat

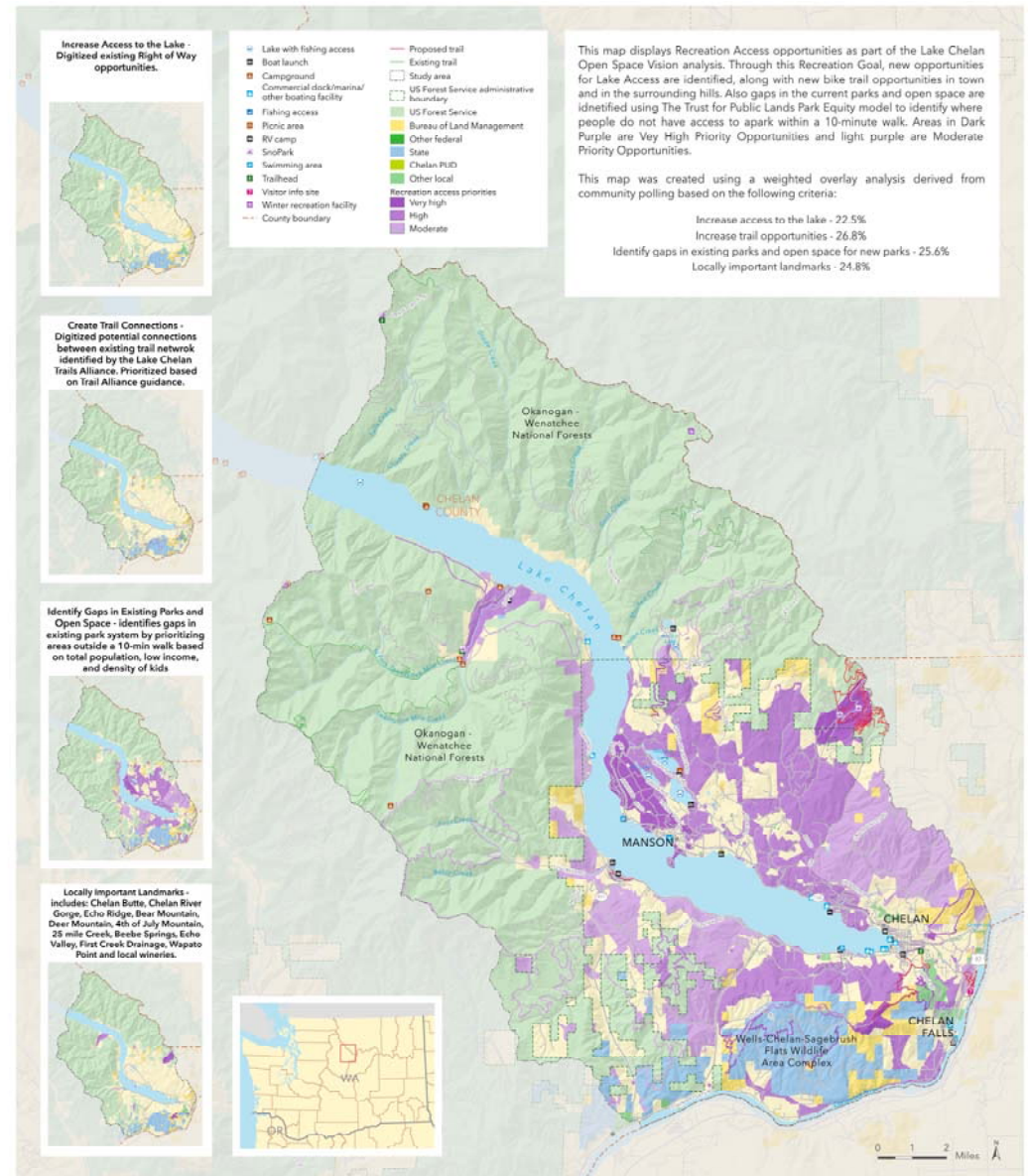
LAKE CHELAN COMMUNITY OPEN SPACE VISION

May 10, 2017. Copyright © The Trust for Public Land. The Trust for Public Land logo are federally registered marks of The Trust for Public Land. Information on this map is provided for purposes of discussion and visualization only. [www.tpl.org](http://www.tpl.org)



# Resource Goal – Recreation Access

1. Increase access to the lake = 22.5%
2. Create trail connections = 26.8%
3. Identify gaps in existing parks and open space. = 25.6%
4. Locally Important Landmarks = 24.8%



## Recreation access

LAKE CHELAN COMMUNITY OPEN SPACE VISION

May 10, 2017. Copyright © The Trust for Public Land. The Trust for Public Land logo are federally registered marks of The Trust for Public Land. Information on this map is provided for purposes of discussion and visualization only. [www.tpl.org](http://www.tpl.org)



# Creating Overall Map

---

1. Create a combined map that **shows stacked benefits** and **helps set priorities**.
2. Just one view. Goal maps will still exist separately.
3. Two alternate scenarios: equally weighted or based on community preference (survey results).



# Overall Conservation Goal – compare scenario weights

	Equally Weighted	Community Poll
Water Quality	25%	40%
Protect Working Lands	25%	16%
Wildlife Habitat	25%	16%
Recreation Access	25%	27%



# Off to the GIS

# Water and Park Workshops



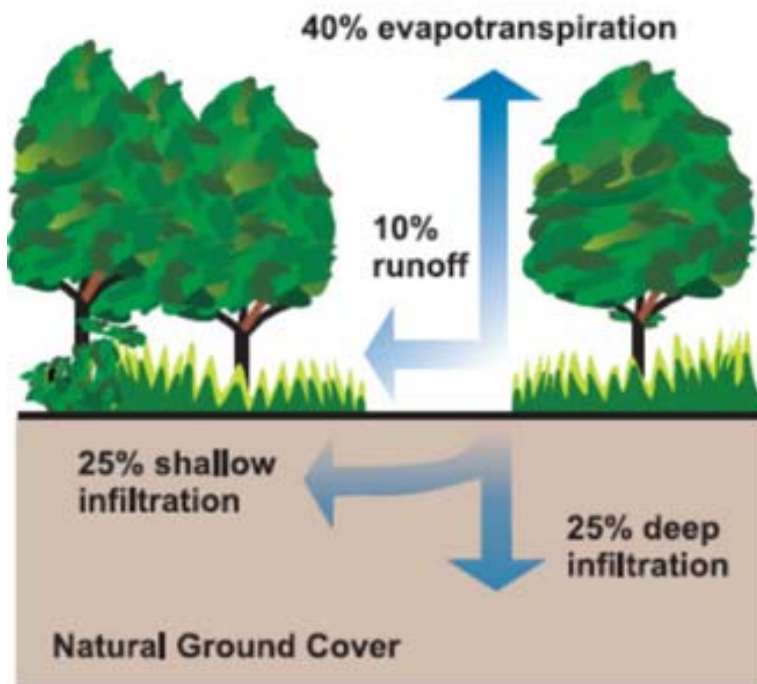
**Water quality is community's top priority – by far!**

THE  
TRUST  
FOR  
PUBLIC  
LAND



# Open space matters for water quality!

---



## How close is your park?

The research is clear: close-to-home parks boost well-being for the entire neighborhood.





# 10-minute walk in Lake Chelan area

---



70% in Chelan  
22% in Manson  
45% entire area





# before

P.S. 7 community playground in the Bronx





# after

P.S. 7 community playground in the Bronx

THE  
TRUST  
FOR  
PUBLIC  
LAND



# Water Quality and Park Workshops

---



1. **WATER:** What needs to happen to protect local water quality? What do we need to do in addition to land protection?
  2. **PARKS:** How can we improve and increase access to local parks? What are the limits of current parks? How can they be improved? If new parks are needed, where?
- Use dot stickers to vote for top two priorities for water and top two priorities for parks

# Implementation Planning Exercise

---



What steps will be most important in ensuring that the Lake Chelan Community Open Space Vision is successfully implemented?

Please specify who/what/when/where/how for each step.



# Next Steps

---



- Integrate field verification data into recreation mapping
- Create final overall map
- Develop story map
- More outreach to Hispanic community (focus groups and survey outreach)
- Begin working on draft report



# Thank you!

---



**Amy Wilson Morris, PhD**  
Conservation Vision Program Manager  
The Trust for Public Land  
[Amy.Morris@tpl.org](mailto:Amy.Morris@tpl.org)

**Mitchel Hannon**  
GIS Project Manager  
The Trust for Public Land  
[Mitchel.Hannon@tpl.org](mailto:Mitchel.Hannon@tpl.org)





## Meeting Note Summary

### Lake Chelan Community Open Space Vision Community Meeting #3

Wednesday, September 13, 5:30 to 7:30 PM  
City of Chelan Council Chambers  
135 E Johnson Ave, Chelan, WA 98816

### Attendees

Amy Morris, The Trust for Public Land  
Andrew Fielding  
Bruce Hurst  
Curt Soper, Chelan Douglas Land Trust  
Gerry Ustanik, Mountain View Lodge  
Gary Sterner, Chelan Basin Conservancy  
Guy Evans, Lake Chelan Trails Alliance  
Hanne Beener, Chelan Douglas Land Trust  
John Olson, Friends of Lake Chelan  
Karen Sargeant, City of Chelan  
Ken Dull  
Kim Ustanik, Mountain View Lodge  
Lynette Grandy

Phil Long, Lake Chelan Research Institute  
Paul Willard, Lake Chelan Trails Alliance  
Rob Campbell, Manson Parks  
Robin Pittman, Manson Parks  
Sharon Lukacs, Yellow Brick Inn BnB  
Steve Easley  
Steve Kline, Chelan  
Steve Milner  
Tim Hollingsworth  
Wai Tim Peterson, Chelan County PUD

### 1. Welcome and Introductions

Chelan Mayor Mike Cooney welcomed participants. Mayor Cooney recognized Karen Sargeant, City of Chelan's Parks Director, thanked the Trust for Public Land for their work, and thanked participants for all of their excellent input. Amy Morris from The Trust for Public Land then led round robin introductions.

### 2. Overview of Meeting Goals and Open Space Vision Process

Amy reviewed meeting goals, provided a brief overview of process and key results. She explained the benefits of open space; including community identity, community health, clean drinking water, clean air, flood control, cultural traditions, natural lands and habitat, local farms and food, and economic benefits. Amy also explained the Open Space Vision Steps (see attached slides). Amy explained that after this meeting the final report will be created. The ultimate goal of this process is to help the community make the best possible decisions about conservation and recreation priorities. Amy then reviewed the community engagement for the Open Space Vision. There were over 720 survey responses, and 409 provided feedback at events. Amy then presented a word cloud that was created based on responses to "What do you love most about the Lake Chelan area"? Most popular responses included: lake, water, beauty, and parks in both the English and Spanish surveys. The top priorities from the surveys showed the lake and parks. She then reviewed key results from the community meetings, which included access opportunities, water and park priorities, and a variety of potential obstacles.

The top community goals for the Open Space Vision are protect water quality; promote community health through increasing access to trails, parks, and the lake; protect wildlife habitat; and preserve agricultural land. Amy explained that these top goals were translated into maps. The overall map combines all the results.

### 3. Lessons from Wenatchee

Curt Soper, Executive Director of the Chelan Douglas Land Trust, discussed success stories from the community open space work in Wenatchee, primarily the Wenatchee Foothills Community Strategy. Curt introduced Steve Milner, Sharon Lunz and Hanne Beener from the Chelan Douglas Land Trust, who were very involved in the Wenatchee Foothills Campaign. He shared that the City of Wenatchee decided to take a holistic look at several proposed developments in the foothills. This led to the Wenatchee Foothills Community Strategy, with the City, TPL and the Chelan-Douglas Land Trust. The Chelan Douglas Land Trust had the opportunity to purchase Saddle Rock, which is an iconic area of the Foothills. This eventually led to a multi-year effort to raise the money, buy land, and build trailheads and trails. They explained that volunteers were critical, and that there was no way they could have paid for everything that needed doing: including building trails, controlling weeds, etc.

The Chelan Douglas Land Trust has now completed their fundraising campaign, and most projects are completed. The City became a proponent of focusing development in appropriate areas. The campaign also changed the nature of the conversation in Wenatchee. Many developers were involved in the strategy and the campaign, and some sold their property. They explained that the message was “it is going to take longer and cost more money than you think, but stick with it, it will be so worth it.” Steve Milner, Chelan Douglas Land Trust Board Member, then shared that one interesting offshoot was the strengthening of the relationship with Confluence Health, which recognizes the importance of quality of life when it comes to recruiting and retaining medical providers. Confluence Health has been a major supporter of the Chelan Douglas Land Trust, and especially the Foothills Campaign.

### 4. Revisit Vision Statement

Amy then briefly revisited the vision statement for the Lake Chelan Community Open Space Vision. She explained that 96% supported vision statement last time, but we received a comment that it should include water. Since water quality is the biggest community priority, could we revise? Amy proposed a draft revision and then the meeting participants did some additional wordsmithing. There was some discussion around mentioning access, adding lake and foothills, clean water, and using the word “valley.”

The previous vision statement was *“To thrive in a valley defined by its spectacular scenery, small-town character, agrarian traditions, and world-class recreation and to leave a community rich in opportunity for future generations.”* The final vision statement approved by 95% of meeting participants (using keypad voting) was *“To thrive in a valley defined by its spectacular lake and foothills, small town character, agrarian traditions, and access to world-class recreation, and a community rich in opportunities for future generations.”*

### 5. Introduction of Story Map

Kristen Weil from The Trust for Public Land introduced the meeting participants to the draft story map (<https://web.tplgis.org/lakechelan/>). She explained that the story map is equal parts story and map. She showed that the map can be zoomed in, and provided a quick demo of what the current story map looks like online. Participants provided input that the story map looks great, and that it would be easier if

there was a simple URL. Tim Hollingsworth asked for shape file when complete. One participant asked about the wildlife habitat, and if it shows what type of seasonal habitat (i.e. winter range?). Kristen explained that that level of detail is not included and that they tried to strike a balance between useful data and usability. Meeting participants also discussed whether it would make sense to make landownership information clearer in the story map.

Participants were then given a ½ sheet of paper to provide any quotes or stories pertaining to the Lake Chelan area. Quotes and stories can still be added to the story map and report. Please continue to send any additional quotes and stories to [Chrissy.pepino@tpl.org](mailto:Chrissy.pepino@tpl.org).

## **6. Implementation Steps**

Amy provided a brief overview of the draft implementation steps created based on the input from the community meeting in May 2017. Participants were given ten minutes to review the draft steps and take notes. Participants divided into four groups to discuss revisions, priorities, and additional action steps. Amy Morris, Kristen Weil, Guy Evans and Hanne Beener facilitated the small group discussions and took notes on flip chart sheets. The group used dot stickers to vote for their top priorities. Suggestions included focusing on milfoil removal, working more closely with Manson, prioritizing lake access, connecting with vintners, reaching out to developers and to Chelan County, and making sure that landowners understand the benefits of conservation. Suggestions from the meeting will be incorporated into a revised version of the implementation steps.

## **7. Next Steps and Closing**

Amy thanked everyone for investing their time and energy in this effort. She shared that there is momentum coming out of this effort, and that a plan like this can help when apply for public funding. She let the group know that she will summarize the material collected today and send out a meeting summary by email. Guy Evans from the Lake Chelan Trails Alliance and Mayor Cooney also thanked everyone for their participation.

# Lake Chelan Community Open Space Vision

September 2017



# Conveners

---

- City of Chelan
- Lake Chelan Trails Alliance
- Chelan-Douglas Land Trust
- The Trust for Public Land





# Meeting Goals

---



- REVIEW process and highlights
- HEAR lessons from Wenatchee
- REVISIT the vision statement
- INTRODUCE the story map
- REFINE implementation steps
- CELEBRATE our accomplishments



# Building a Community Open Space Vision

# Public Benefits of Open Space

---



- **QUALITY OF LIFE**
- Community identity
- Community health
- Clean drinking water
- Flood control
- Clean air
- Cultural traditions
- Natural lands and habitat
- Local farms and food
- Economic benefits

# Open Space Vision Steps

---

1. **Gather community input** (interviews, surveys, speak outs, focus groups, community meetings)
  2. **Analyze community input**
  3. **Collect data** and translate into **GIS models**
  4. **Weight criteria and goals** based on technical team and community input
  5. **Create maps** that reflect community priorities
  6. Develop an **implementation plan**
  7. Create an **online story map**
  8. **Prepare report** that includes maps, community priorities, and action steps
- Help community make the best possible decisions

# Where are we in the process?

---

- Outreach (speak-outs) – summer and fall 2016
- Outreach (interviews) – summer and fall 2016
- Outreach (survey) – July 2016 through May 2017 (Spanish)
- Community workshop #1 – October 2016
- Community workshop #2 – January 2017
- Community workshop #3 – May 2017
- Trail groundtruthing – spring 2017
- Final goal maps, overall map, and story map – summer 2017
- **Final community workshop – September 2017**
- Final report, story map, and launch – late 2017





Community engagement – thank you for your input!



# Community Engagement

---

- Community members provided over 720 survey responses
    - 118 from local high schools
    - 79 collected by students using a Spanish-language survey
  - 409 provided feedback at local events
  - Over 150 participated in one or more community meetings
- The lake and local parks are major priorities





What do you love most about the Lake Chelan area?





# parques



What places have special meaning to you?

# Key results from community meetings

---

- Access opportunities (1/26)
  - Utilize public ROWs to the lake
  - Acquire land and trail easements
- Water/park priorities (5/11)
  - Educate public about water quality
  - Control sources of pollution
  - Improve bike and pedestrian access to parks
  - Outreach to road-end property owners
  - Improve existing parks
- Obstacles (1/26)
  - Private property limits access
  - Need for parking and trailheads
  - Funding



# Community Open Space Vision goals



**Protect water quality (top priority – by far!)**







**Promote community health through increasing access to trails, parks, and the lake**







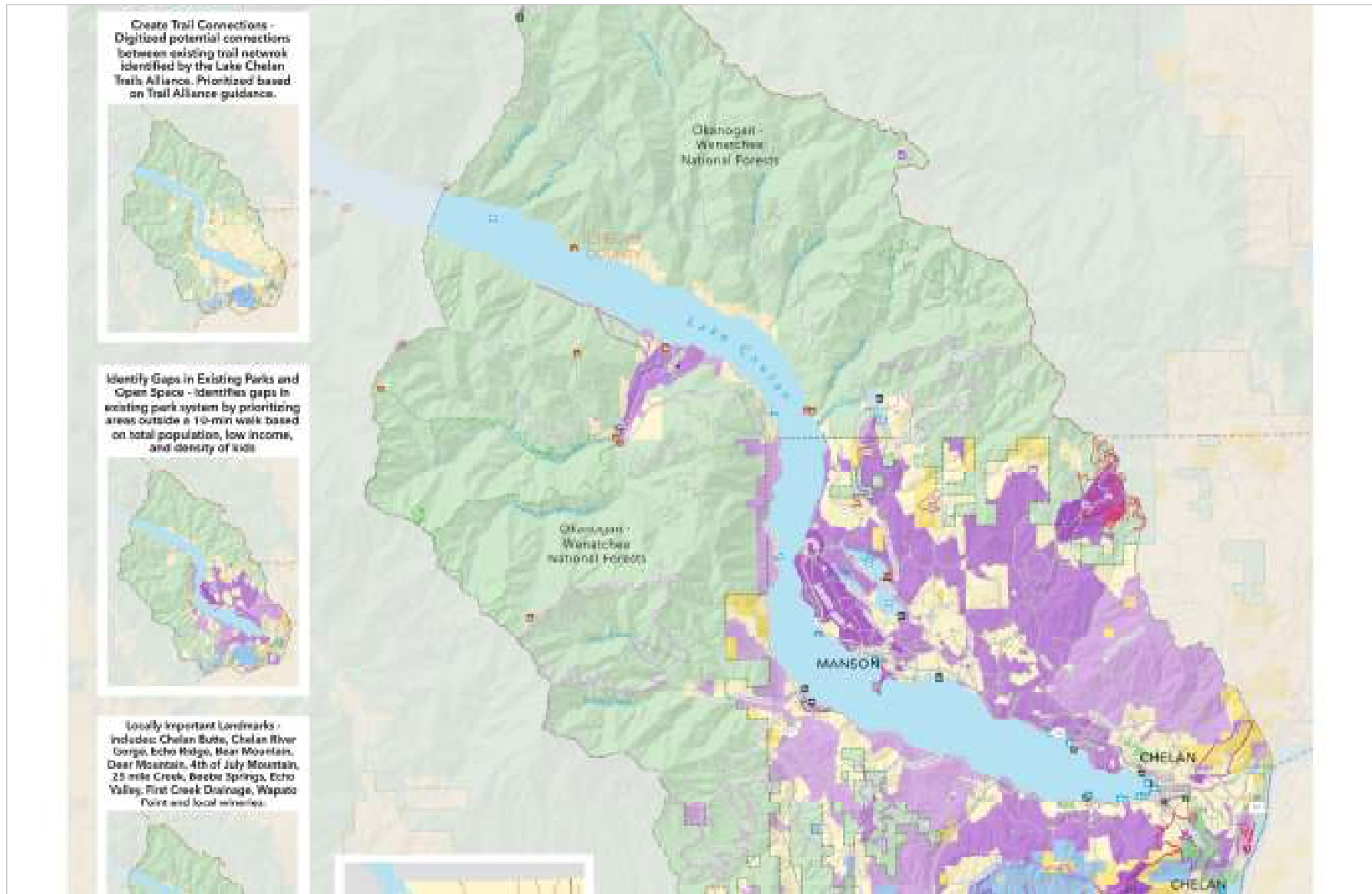
Protect wildlife habitat



Preserve agricultural land







Goals translated into maps – thank you to meeting participants and technical advisory team members!



# Lessons from Wenatchee

















# Revisit Vision Statement



# Vision Statement

---

*To thrive in a valley defined by its spectacular **scenery**, small-town character, agrarian traditions, and world-class recreation and to leave a community rich in opportunity for future generations.*

*To thrive in a valley defined by its spectacular **lake and foothills**, **clean water**, small-town character, agrarian traditions, and world-class recreation and to leave a community rich in opportunity for future generations.*

# Stretch Break!

---



# Story Map

## LAKE CHELAN COMMUNITY OPEN SPACE VISION



### Story Map

Explore Lake Chelan's Community Open Space Vision



### Data Description

Learn about the data used for the Open Space Vision Analysis



### User Guide

Learn how to use the tools and explore the data

### Our Partners



<https://web.tplgis.org/lakechelan/>

To learn more, click here.

Facebook Twitter Email

TRAILS RELIANCE


Chelan County LAND TRUST

# Lake Chelan Community Open Space Vision

*"It feels that our Chelan Community is at a crossroads, that others are discovering it or have already found their slice of paradise and I feel that it is imperative for our leaders to 'get it right' in terms of growth. At the core of getting right is to work to protect all possible open spaces for future generations. Some key items that we are striving to protect are large open tracks for recreation such as, trails view corridors, biking, etc. another key focus is to protect our lake water quality and enhance more public lake access.*

*As we travel and observe of other rural towns, you can see how others have worked to get it right or conversely have not done so. We want to pass on a much better community. We owe it to our next generation." - Mayor Mike Cooney*

Lake Chelan and its surrounding foothills provide extremely rich scenic, recreational, ecological, and agricultural resources to local communities and visitors. The area is known for having significant freshwater access points that provide spectacular fishing, boating, swimming, and other waterfront activities. Chelan has significant environmental features including unique wetlands, open spaces, woodlands, shorelines, waterfronts, significant forest cover, bluffs, and other characteristics that support wildlife and reflect the city's resource heritage. **As the area grows, strategic placement of parks and open space will be needed** to maintain these resources, while developing new recreational opportunities and maintaining the communities agricultural heritage which are critical to



Explore Lake Chelan's Community Open Space Vision





# Implementation Steps

# Draft Implementation Steps

---

1. Protect highest priority local lands and resources
2. Create structure and expectations for ongoing implementation of Open Space Vision
3. Develop a strong communications strategy for the Open Space Vision
4. Incorporate Open Space Vision into local planning efforts
5. Identify and pursue traditional and non-traditional funding sources or actions to implement the Greenprint

# Implementation Steps Exercise

---



## What's missing?

What steps will be most important in ensuring that the Lake Chelan Community Open Space Vision is successfully implemented?

Please specify who/what/when/where/how for each step.



# Next Steps

---



- Final feedback for implementation steps
- Final report preparation
- Story map revisions
- Official launch in late 2017
  
- Volunteer with Lake Chelan Trails Alliance
- Stay in touch with Chelan-Douglas Land Trust and The Trust for Public Land



# So much to celebrate!

---



- Huge community involvement
- Major local support for protecting water quality and increasing access to parks and the outdoors
- Tools to move forward with community-based open space protection, park improvements, and new trails
- Momentum is building!





# Thank you!

---



**Amy Wilson Morris, PhD**  
Associate Director of Planning  
The Trust for Public Land  
[Amy.Morris@tpl.org](mailto:Amy.Morris@tpl.org)

**Kristen Weil**  
GIS Project Manager  
The Trust for Public Land  
[Mitchel.Hannon@tpl.org](mailto:Mitchel.Hannon@tpl.org)

