



OVERVIEW

This appendix provides results from TPL research conducted between 2002 and 2004 on state and federal funding for land conservation in the four Connecticut River watershed states. Although significant effort went into the research, with substantial assistance from many state and federal agencies, the accuracy of the results cannot be guaranteed. In addition, the reader is advised that funding levels have declined significantly since 2002 in most federal and state programs in the watershed, and several sources listed have been unfunded in recent years.

TABLES 1-3: FEDERAL LAND CONSERVATION SPENDING, 1998 - 2002

These tables show where land conservation funding from several key federal programs was spent during the study period. Table 1 shows all federal programs studied by state, including proportions spent within and outside the watershed. Table 2 shows statewide funding by program. Table 3 shows amounts spent within the watershed by program. Programs are as follows:

FPP: Farmland Protection Program
WHIP: Wildlife Habitat Incentives Program
WRP: Wetland Reserve Program
Forest Legacy Program
MBF: Migratory Bird Fund
NAWCA: North Atlantic Wetlands Conservation Act
Coastal: Coastal and Estuarine Land Conservation Program (CELCP)
P-R: Pittman-Roberts Wildlife Fund
LWCF: Land and Water Conservation Fund
LWCF-S: Land and Water Conservation Fund, Stateside
UPARR: Urban Park and Recreation Recovery
TEA: Transportation Enhancements Act

TABLES 4-5: STATE LAND CONSERVATION SPENDING, 1998 - 2002

These tables show where land conservation funding for acquisitions and grants from several key state programs was spent during the study period. Funds are aggregated by state across multiple programs and agencies. Table 4 shows all state programs studied by state, including proportions spent within and outside the watershed. Table 5 shows statewide funding by type (grant or acquisition).

MAPS 1 AND 2: STATE AND FEDERAL FUNDING BY TOWN

Maps combined state and federal conservation investments, aggregated at the town level, with \$ symbol size proportionate to funding level. Background color indicates the percentage of conservation land in the town. Map 1 includes only the Connecticut River watershed; Map 2 shows the entire state.

MAP 3: FEDERAL FUNDING BY TOWN

Shows the locations of federally funded projects in all four states, color-coded by funding program. Locations are approximate.

MAP 4: STATE FUNDING BY TOWN

Shows the locations of federally funded projects in all four states, color-coded by funding program. Locations are approximate.

Section 8: Funding Analysis¹

Federal Land Conservation Spending 1998 - 2002					
	CT	MA	NH	VT	Total
CRW	\$2,454,061	\$8,124,327	\$15,476,378	\$18,464,304	\$44,519,070
Other	\$18,107,632	\$20,668,080	\$19,683,028	\$16,360,559	\$74,819,299
% CRW	11.94	28.22	44.02	53.02	37.30

WHIP is not included since the data are not available by town location. The location of Fish and Wildlife LWCF Grants and MBCF grants are not known for CT

Federal Land Conservation Spending 1998 - 2002				
	CT	MA	NH	VT
FPP	\$1,598,200	\$1,811,900	\$785,000	\$2,758,400
WHIP	\$760,000	\$808,100	\$1,051,300	\$991,200
WRP	\$87,000	\$45,000	\$1,585,000	\$569,000
Forest Legacy	\$5,251,000	\$3,075,000	\$9,970,000	\$4,096,000
MBF	\$34,000	\$78,000	\$1,723,275	\$4,318,324
NAWCA	\$739,918	\$1,130,000	\$1,607,000	\$4,251,000
Coastal	\$80,000	\$1,295,000	\$0	\$0
P-R	\$0	\$3,280,000	\$0	\$314,862
LWCF - F	\$3,662,385	\$5,706,102	\$11,662,789	\$14,299,579
LWCF - S	\$4,199,820	\$4,918,499	\$1,835,690	\$1,718,047
UPARR	\$2,482,207	\$2,466,225	\$0	\$0
TEA	\$1,667,163	\$4,178,581	\$4,143,639	\$1,508,451
Half of the joint VT/NH and CT/MA NAWCA grants were attributed to each state. TEA numbers only include the Transportation Enhancement dollars that have gone toward acquisition and rail trails.				

Federal Land Conservation in the CT River Watershed 1998 - 2002					
	CT	MA	NH	VT	Total
FPP	\$604,143	\$985,000	\$239,000	\$453,530	\$2,281,673
Forest Legacy	\$100,000	\$874,000	\$7,370,000	\$2,320,000	\$10,664,000
MBF	\$-	\$25,000	\$-	\$4,278,574	\$4,303,574
NAWCA	\$239,918	\$-	\$1,607,000	\$1,607,000	\$3,453,918
Coastal	\$80,000	\$-	\$-	\$-	\$80,000
P-R	\$-	\$1,780,000	\$-	\$167,000	\$1,947,000
LWCF -Fed	NA	\$1,398,210	\$5,444,193	\$8,955,117	\$15,797,520
LWCF-State	\$-	\$-	\$74,000	\$259,003	\$333,003
UPARR	\$930,000	\$552,000	\$-	\$-	\$1,482,000
TEA	\$-	\$2,010,117	\$742,185	\$424,080	\$3,176,382

WHIP is not included since the data are not available by town location. The location of Fish and Wildlife LWCF Grants and MBCF grants are not known for CT

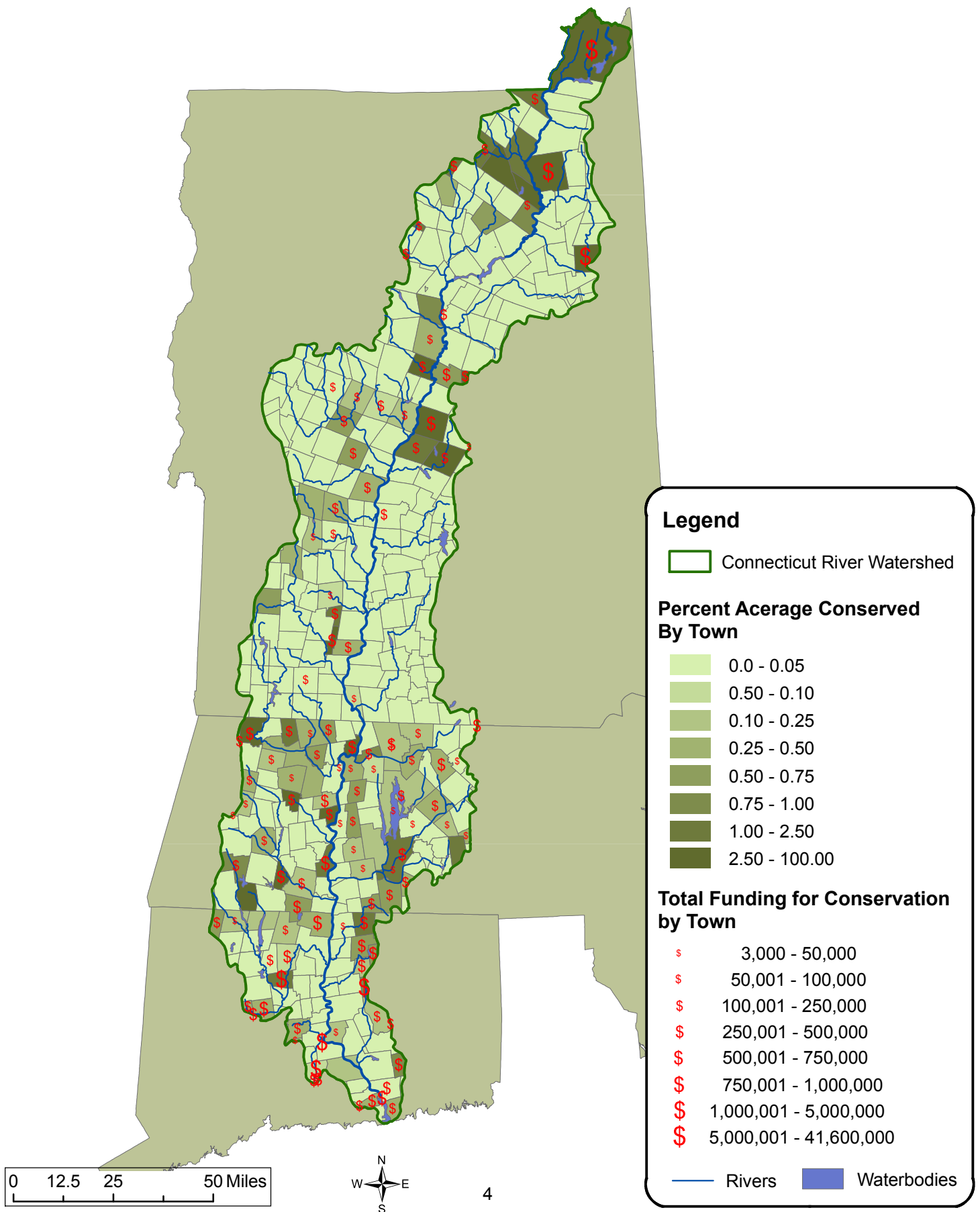
State funding by location				
	CRW	CRW%	Other	Total
CT	\$ 29.60	25%	\$ 89.40	\$ 119.00
MA	\$ 51.00	24%	\$ 165.00	\$ 216.00
NH	\$ 3.60	55%	\$ 2.90	\$ 6.50
VT	\$ 8.70	28%	\$ 22.40	\$ 31.10
	\$ 92.90	25%		\$ 372.60

State funding by type				
	CT	MA	NH	VT
Grants	47.9	42.7	5.3	31.1
Direct	71.1	173.9	1.1	n/a
Total	119	216.6	6.4	31.1

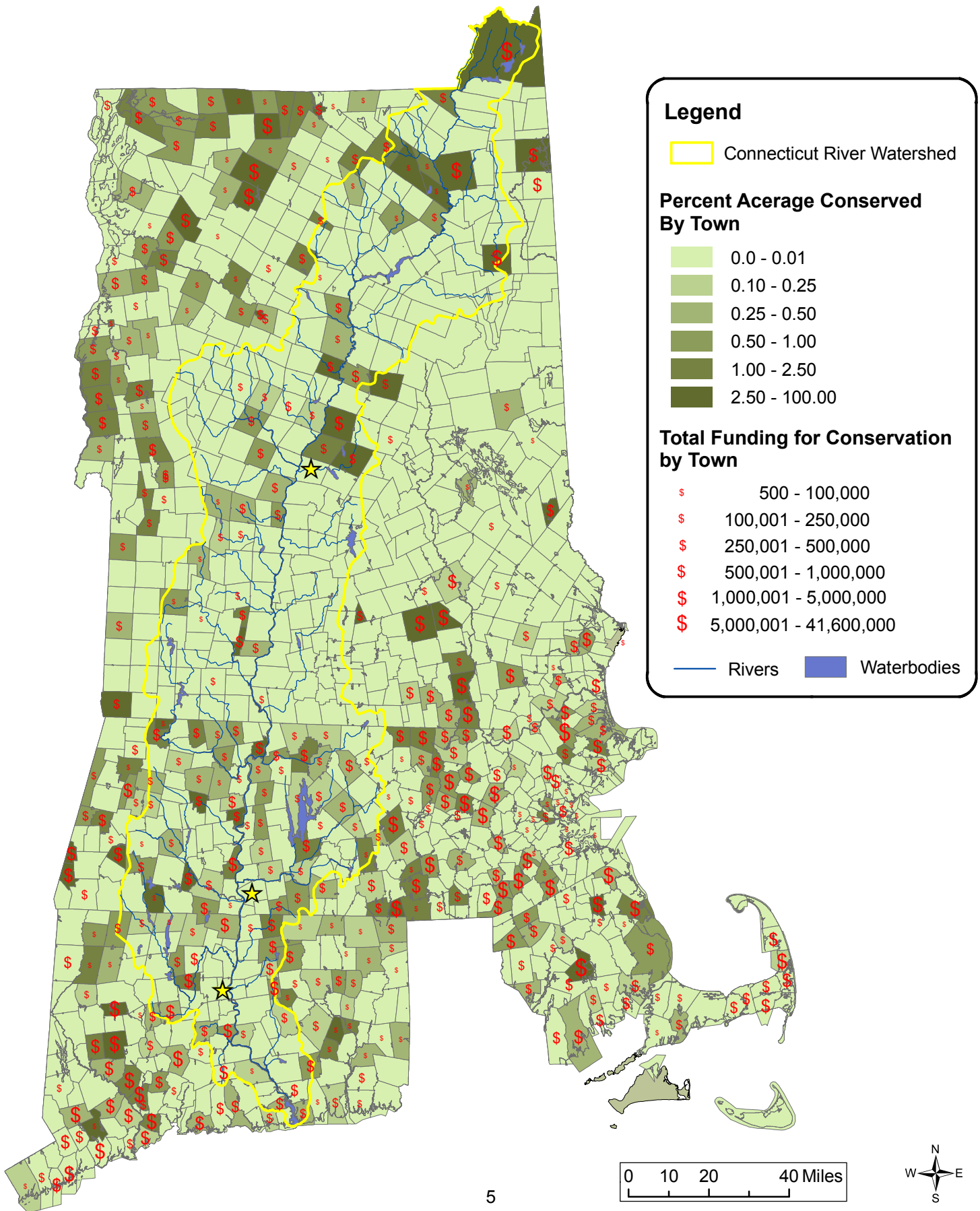
We also completed an analysis of each town's ability to bond. This work was completed by Todd Odit under the guidance of Elizabeth Adams.

See accompanying pdf maps: Federal Funding and State Funding

Connecticut River Watershed Conservation and Funding By Town



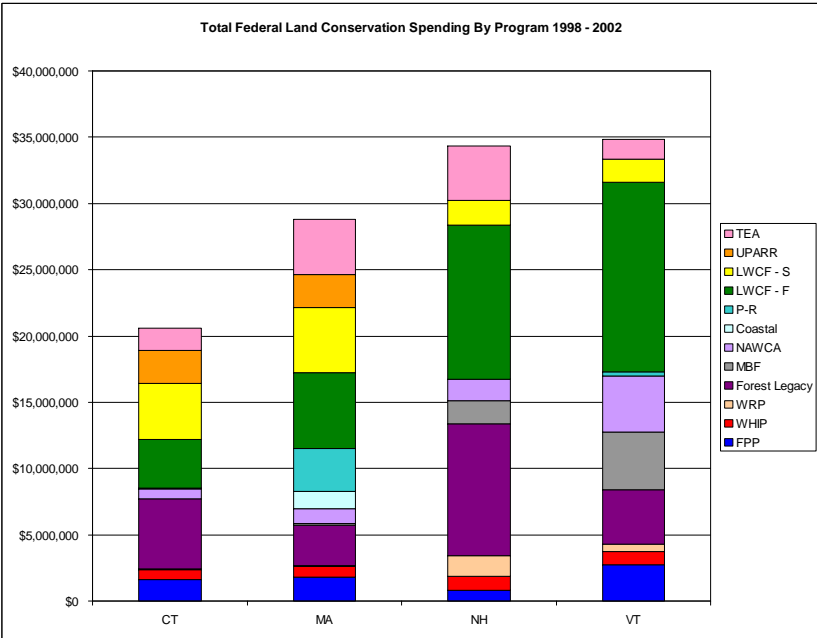
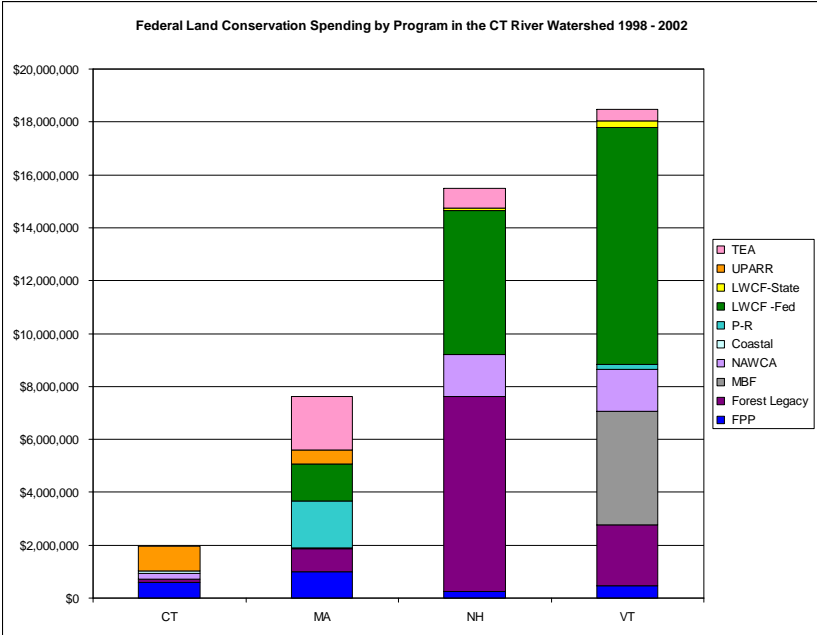
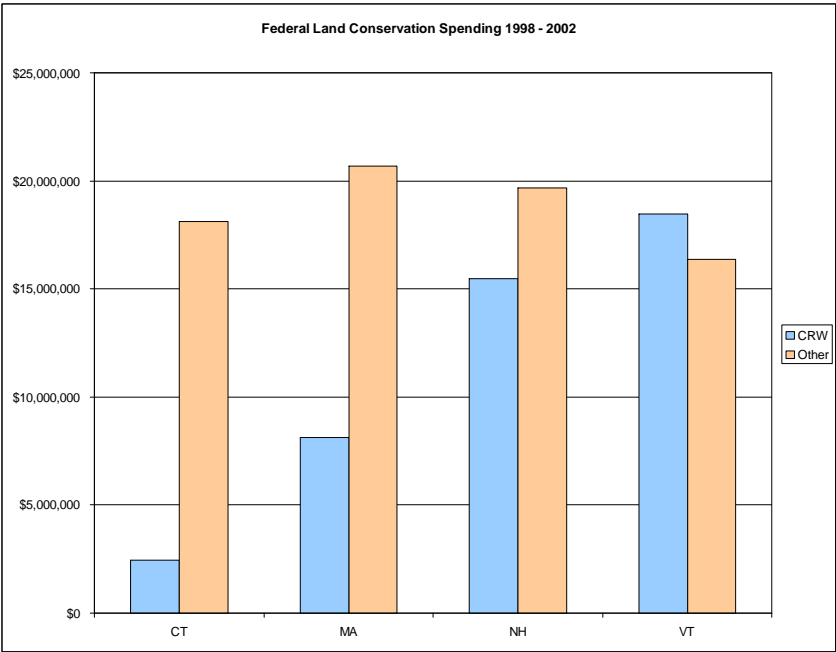
State and Federal Conservation in Connecticut River Watershed States, 1998 - 2002



Federal Conservation Funding in the CT River Valley 1998 - 2002

- Forest Legacy
- FPP
- LWCF
- LWCF - State
- MBCF
- TEA - 21
- UPARR
- Other Programs

One dot represents one project. Each dot is randomly placed within the appropriate town.



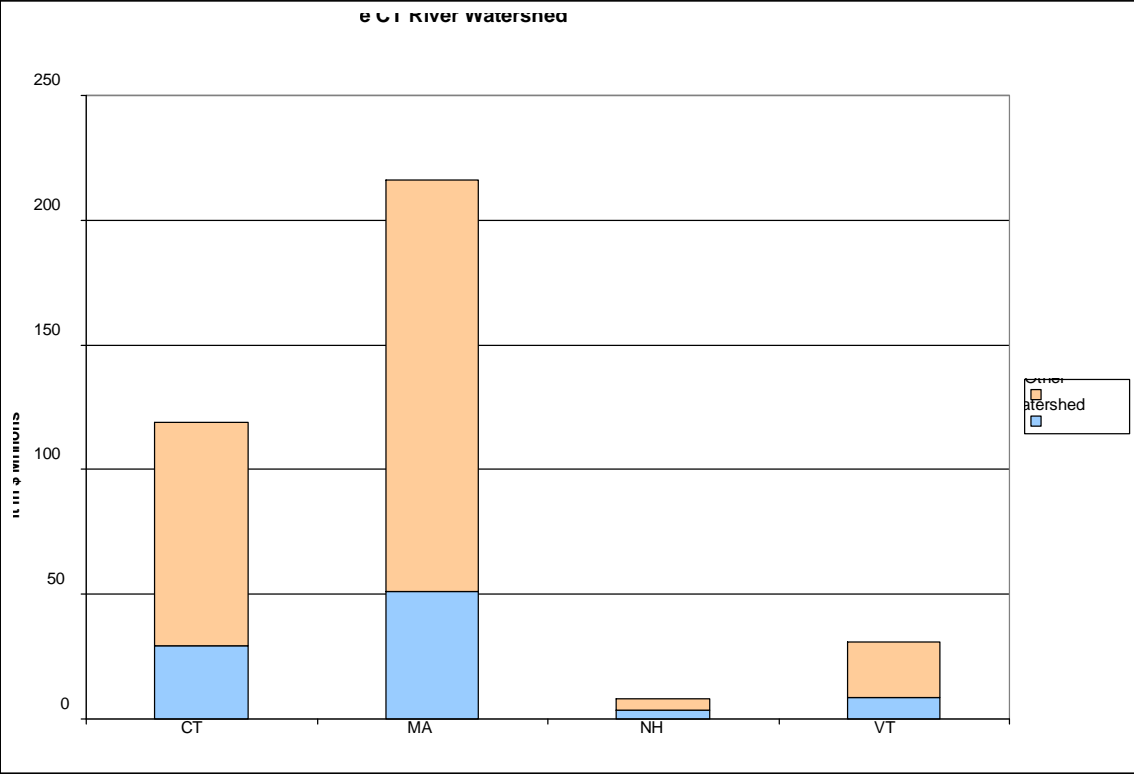
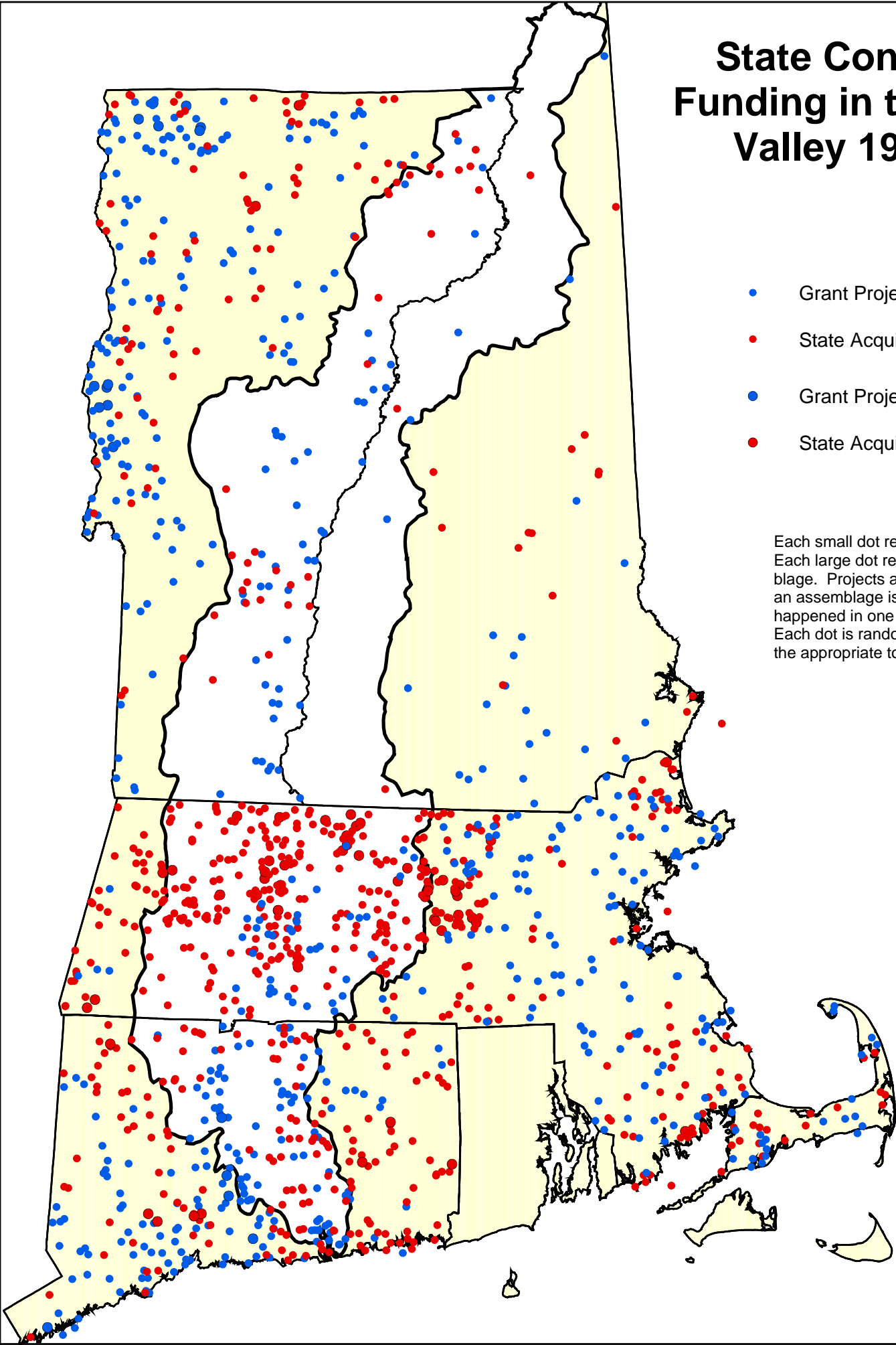
Notes: Data collected from interviews and information provided by state agencies in the summer of 2002. Half of the joint VT/NH and MA/CT NAWCA grants are attributed to each state. TEA numbers include only Transportation Enhancement money that has gone towards acquisition. WHIP is not included since the data are not available by town location. The location of Fish and Wildlife LWCF Grants and MBCF grants are not known for CT.



State Conservation Funding in the CT River Valley 1998 - 2002

- Grant Project (Single)
- State Acquisition (Single)
- Grant Project (Assemblage)
- State Acquisition (Assemblage)

Each small dot represents one project. Each large dot represents one assemblage. Projects are considered to be an assemblage if 3 or more projects happened in one town in one year. Each dot is randomly placed within the appropriate town.



Notes: Data gathered from interviews and information provided by state agencies in the summer of 2002.