

# Prettyboy Watershed Restoration and Conservation Priority Index

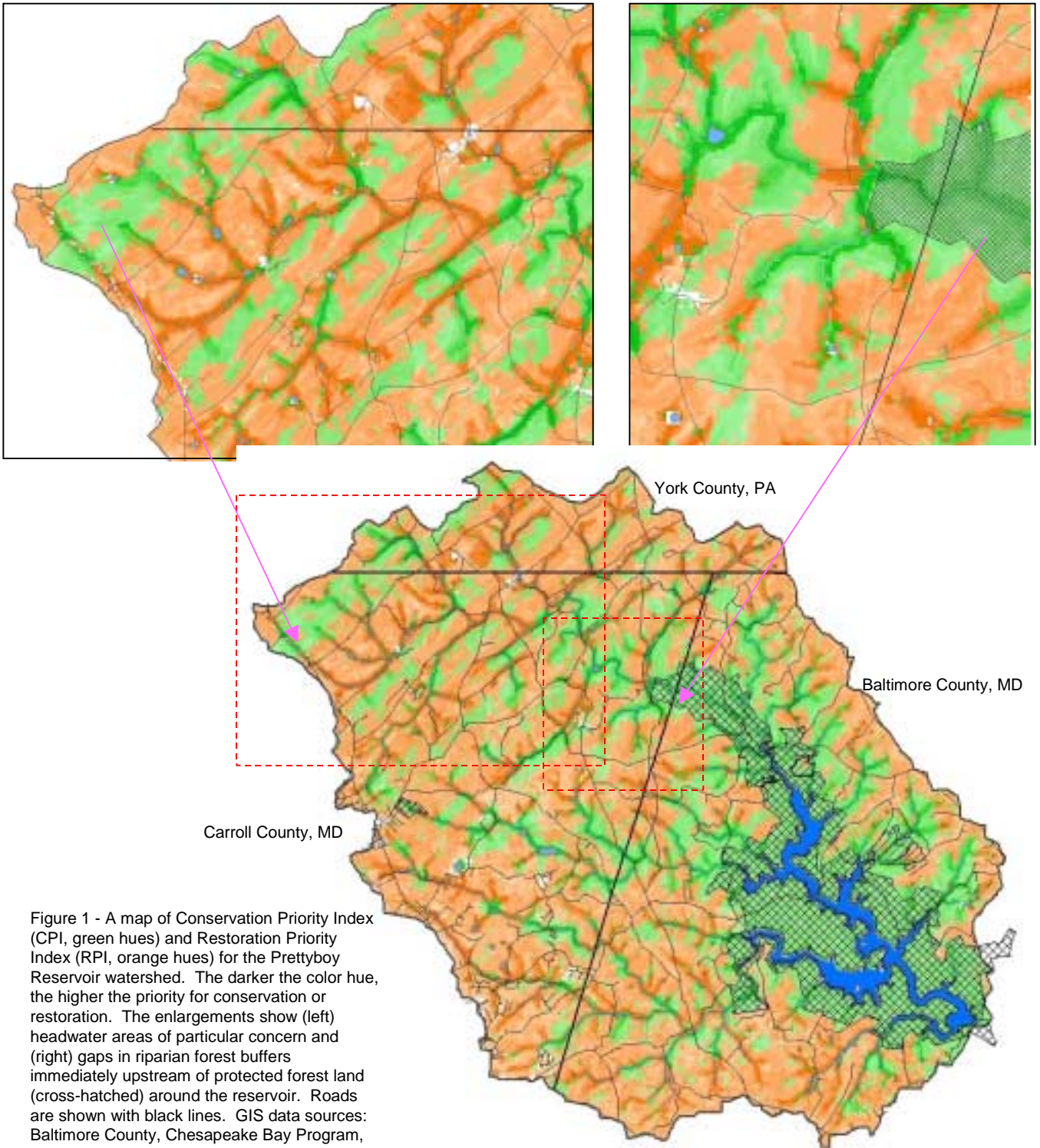


Figure 1 - A map of Conservation Priority Index (CPI, green hues) and Restoration Priority Index (RPI, orange hues) for the Prettyboy Reservoir watershed. The darker the color hue, the higher the priority for conservation or restoration. The enlargements show (left) headwater areas of particular concern and (right) gaps in riparian forest buffers immediately upstream of protected forest land (cross-hatched) around the reservoir. Roads are shown with black lines. GIS data sources: Baltimore County, Chesapeake Bay Program, State of Pennsylvania, Natural Resources Conservation Service, US Geological Survey. This map is intended as a visual aid, not a management tool. For a detailed technical description go to [www.tpl.org/landandwater/](http://www.tpl.org/landandwater/)



# Prettyboy Watershed Highest Priority Lands for Conservation and Restoration

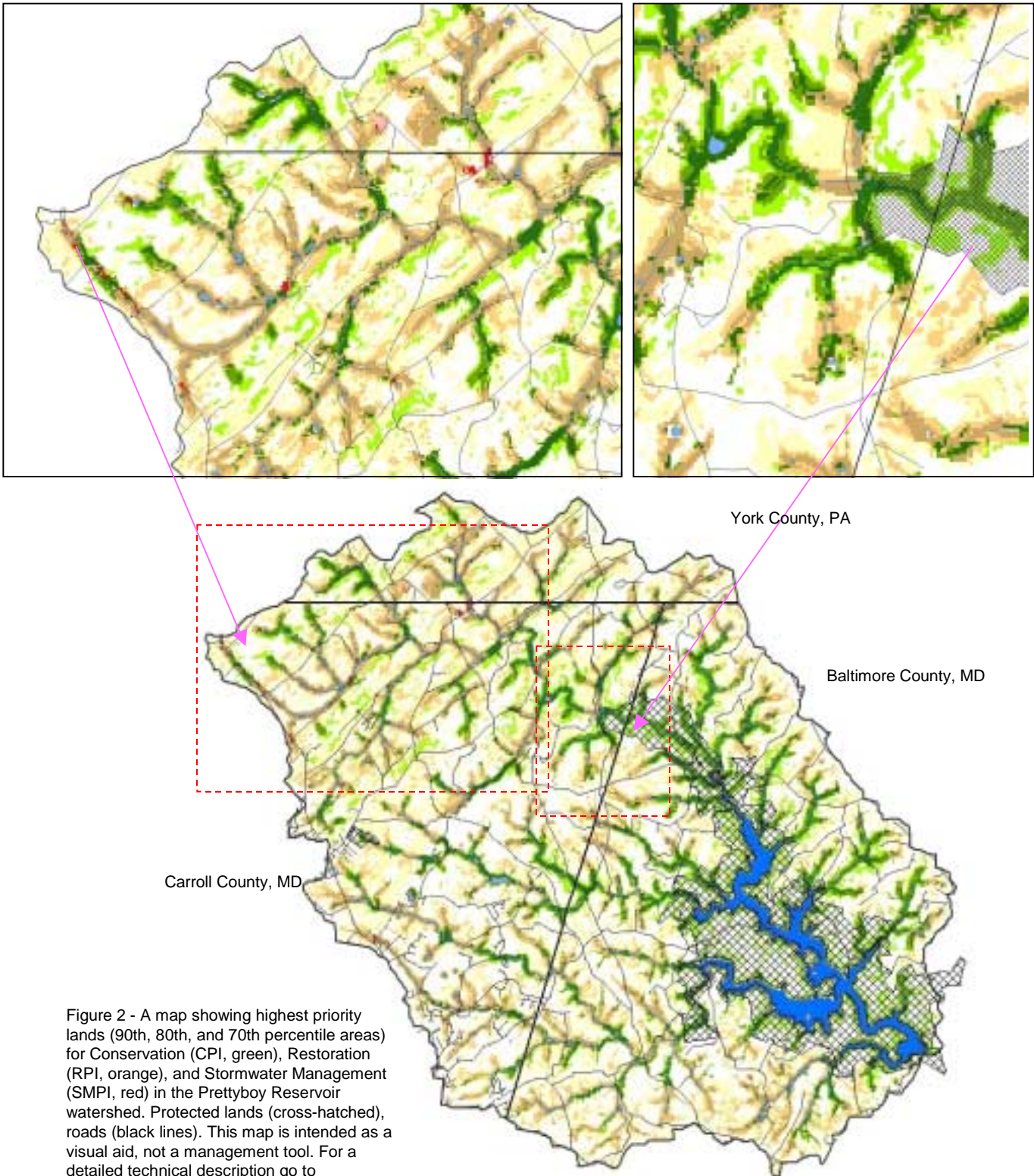


Figure 2 - A map showing highest priority lands (90th, 80th, and 70th percentile areas) for Conservation (CPI, green), Restoration (RPI, orange), and Stormwater Management (SMPI, red) in the Prettyboy Reservoir watershed. Protected lands (cross-hatched), roads (black lines). This map is intended as a visual aid, not a management tool. For a detailed technical description go to [www.tpl.org/landandwater/](http://www.tpl.org/landandwater/)