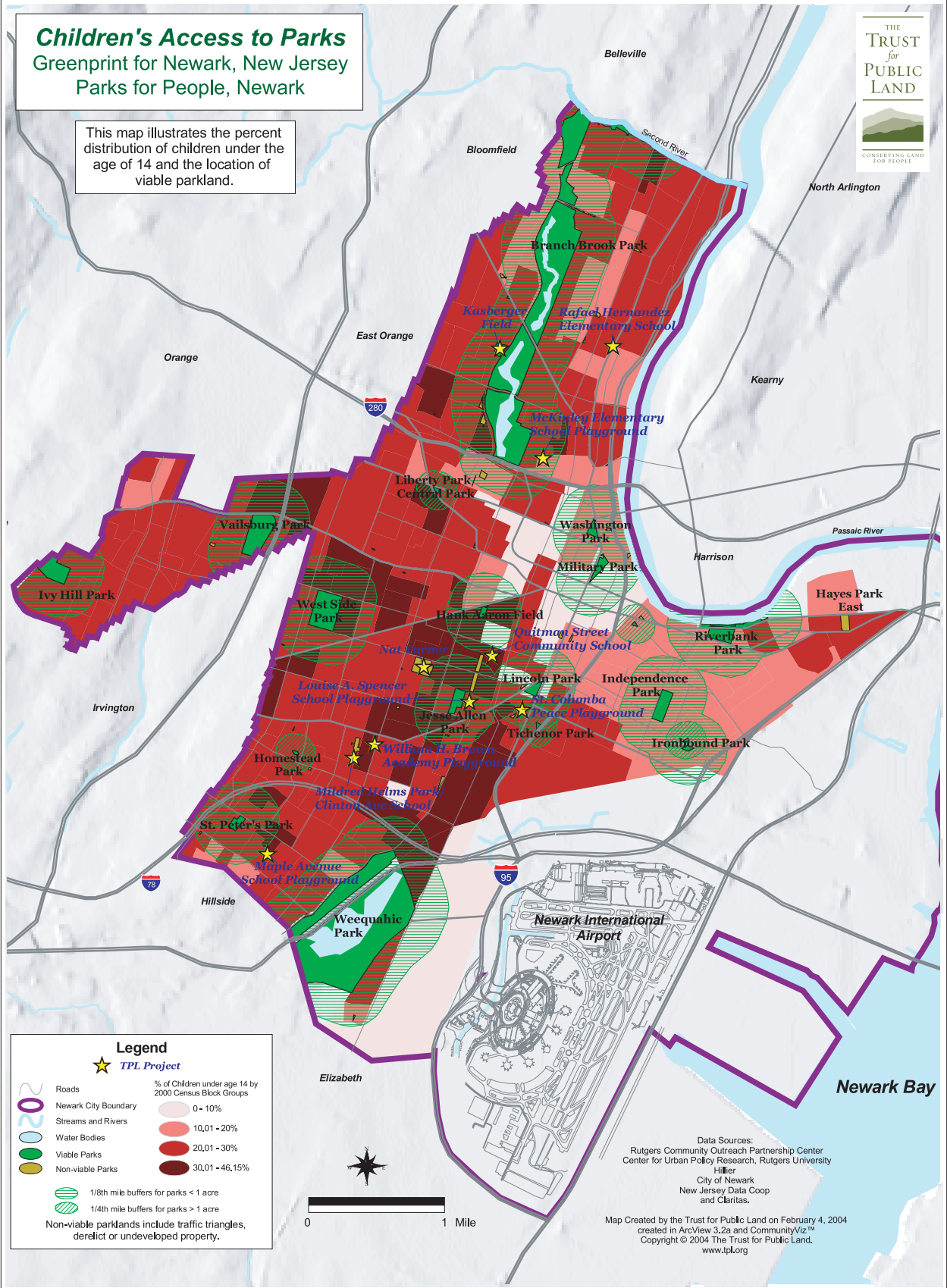


Children's Access to Parks Greenprint for Newark, New Jersey Parks for People, Newark

This map illustrates the percent distribution of children under the age of 14 and the location of viable parkland.



Legend

- ★ TPL Project
- Roads
- Newark City Boundary
- Streams and Rivers
- Water Bodies
- Viable Parks
- Non-viable Parks
- 1/8th mile buffers for parks < 1 acre
- 1/4th mile buffers for parks > 1 acre
- Non-viable parklands include traffic triangles, derelict or undeveloped property.

% of Children under age 14 by 2000 Census Block Groups
0 - 10%
10,01 - 20%
20,01 - 30%
30,01 - 46,15%



Data Sources:
Rutgers Community Outreach Partnership Center
Center for Urban Policy Research, Rutgers University
Hiller
City of Newark
New Jersey Data Coop and Claritas.

Map Created by the Trust for Public Land on February 4, 2004
created in ArcView 3.2a and CommunityViz™
Copyright © 2004 The Trust for Public Land,
www.tpl.org