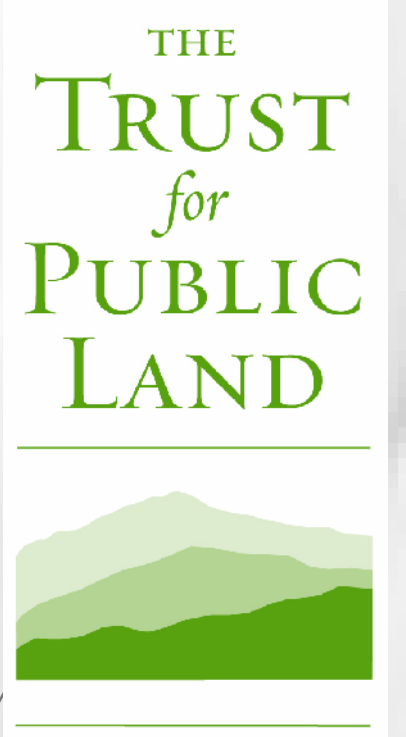
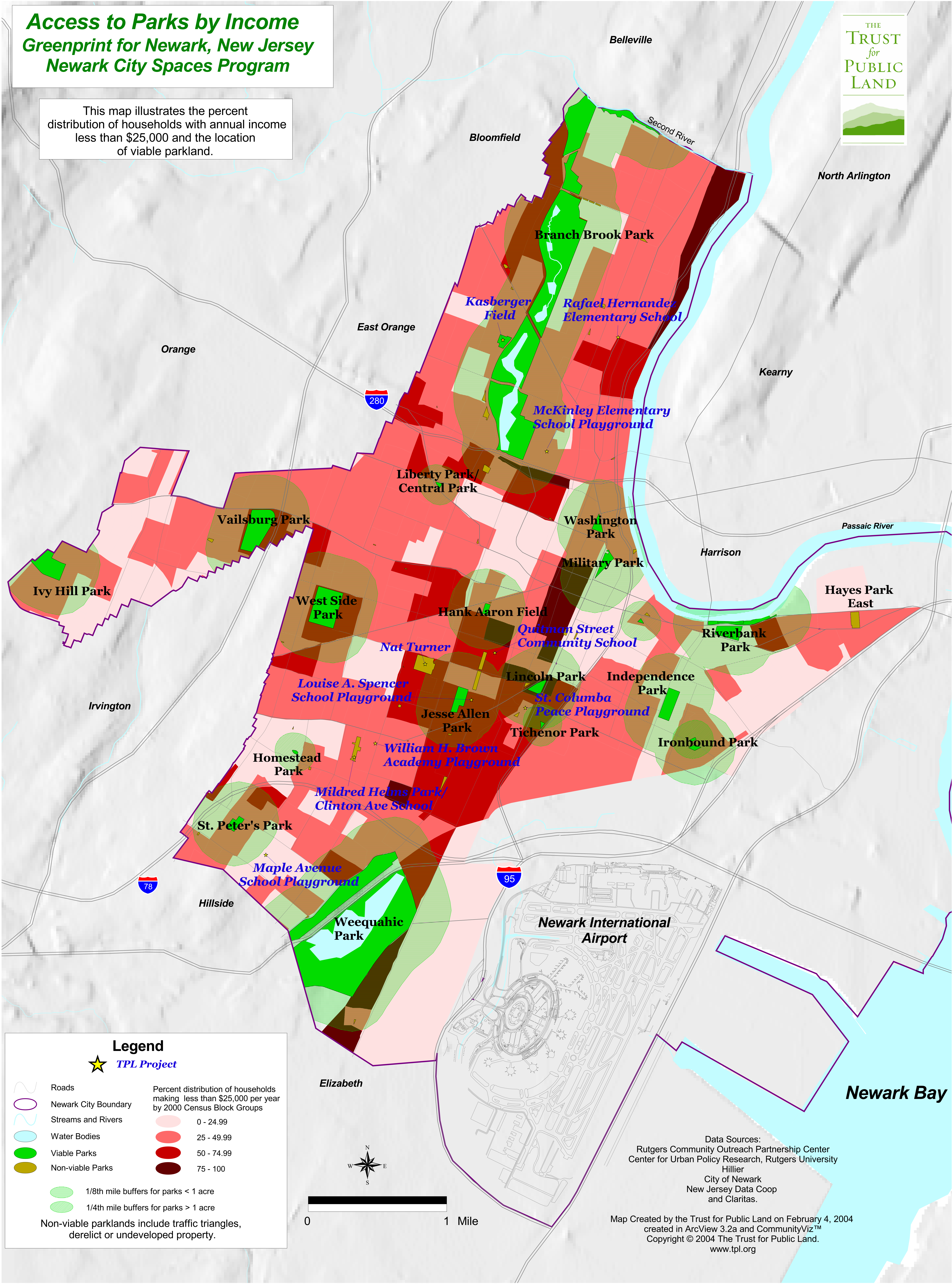


Access to Parks by Income Greenprint for Newark, New Jersey Newark City Spaces Program

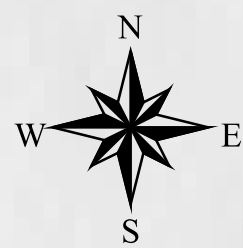


This map illustrates the percent distribution of households with annual income less than \$25,000 and the location of viable parkland.



Legend

- TPL Project
 - Roads
 - Newark City Boundary
 - Streams and Rivers
 - Water Bodies
 - Viable Parks
 - Non-viable Parks
 - 1/8th mile buffers for parks < 1 acre
 - 1/4th mile buffers for parks > 1 acre
 - Non-viable parklands include traffic triangles, derelict or undeveloped property.
- | Percent distribution of households making less than \$25,000 per year by 2000 Census Block Groups | |
|---|------------|
| | 0 - 24.99 |
| | 25 - 49.99 |
| | 50 - 74.99 |
| | 75 - 100 |



0 1 Mile

Data Sources:
Rutgers Community Outreach Partnership Center
Center for Urban Policy Research, Rutgers University
Hillier
City of Newark
New Jersey Data Coop
and Claritas.

Map Created by the Trust for Public Land on February 4, 2004
created in ArcView 3.2a and CommunityViz™
Copyright © 2004 The Trust for Public Land.
www.tpl.org